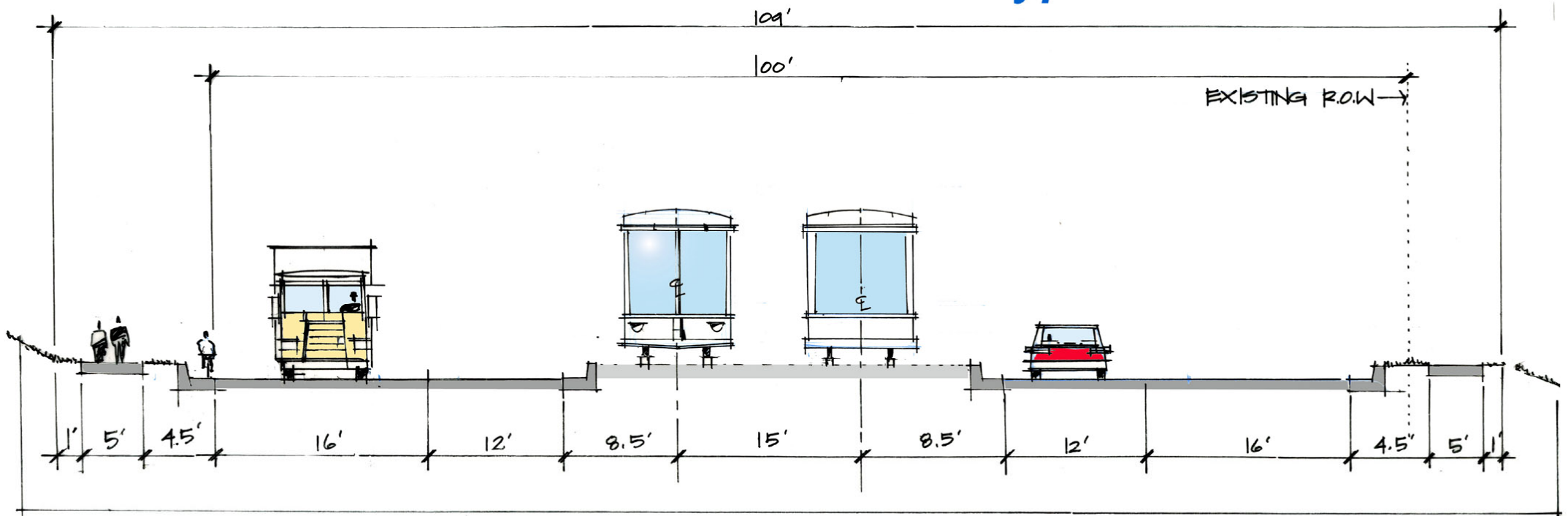
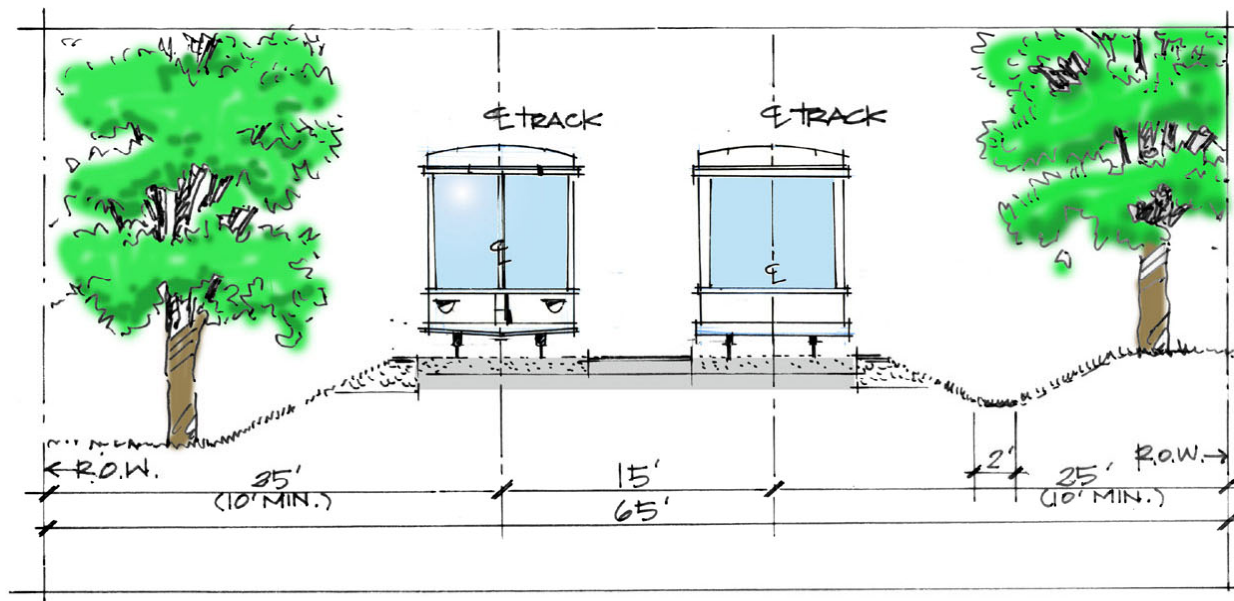


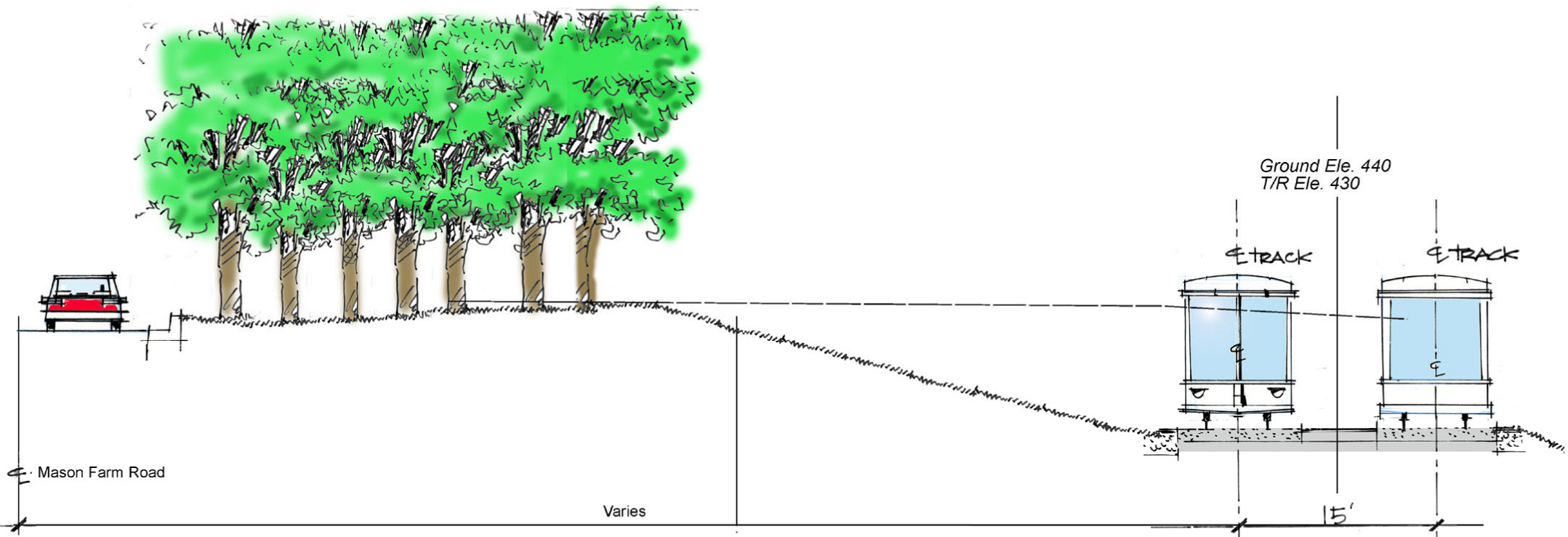
Typical Sections - Rail



Rail Section 1 - Erwin Road LRT Alternatives 1&2

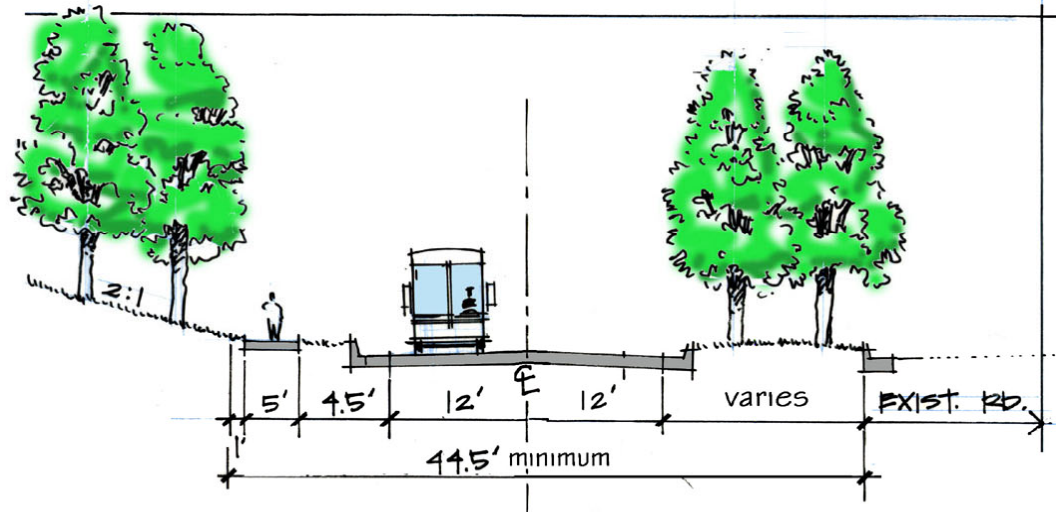


Rail Section 2 - Rail on New Alignment

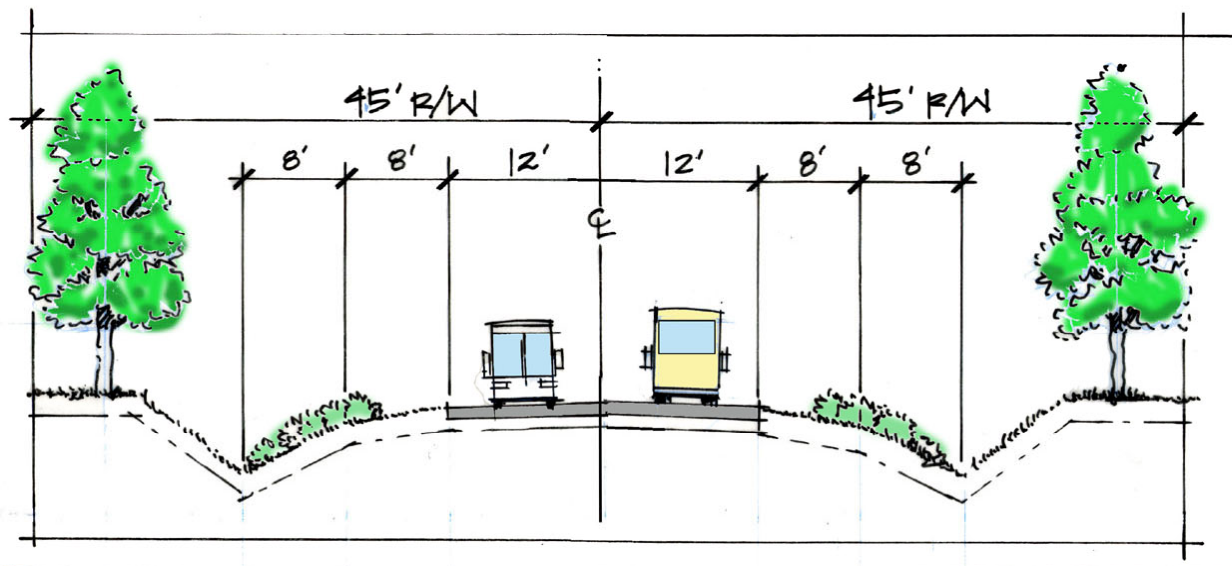


Rail Section 3 - Southern UNC Alignment (DMU Alternative 1 and LRT Alternatives 1, 2, & 3)

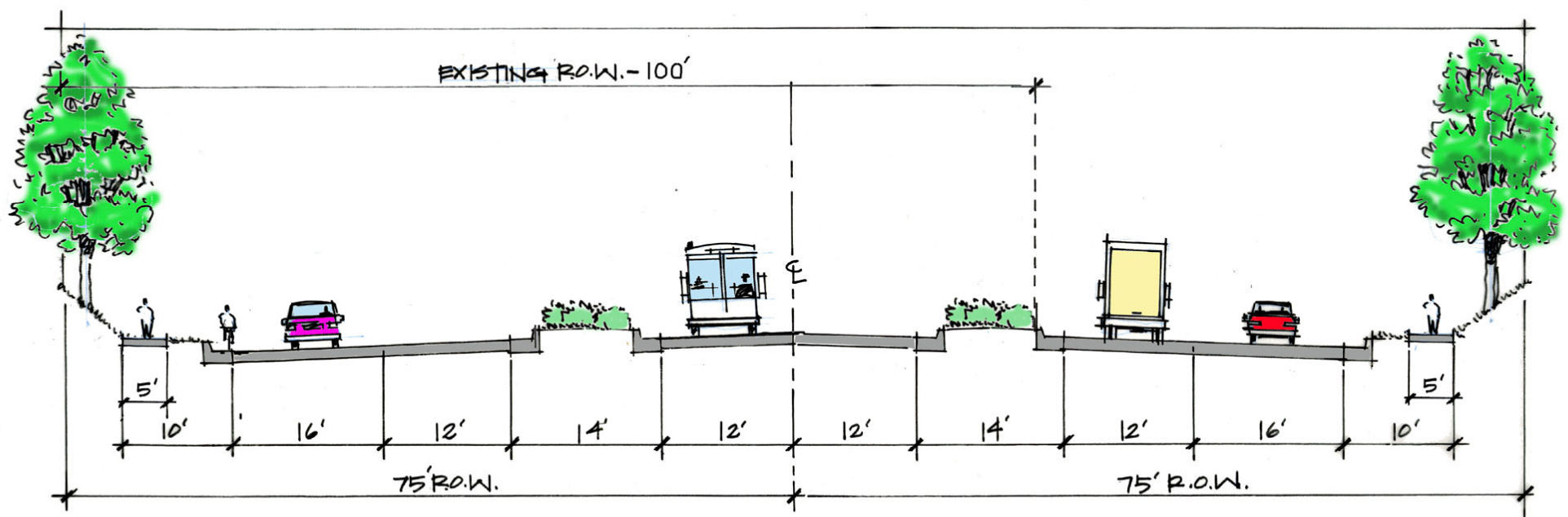
Typical Sections - Bus



Bus Section 1 - Exclusive Busway Adjacent to Existing Roadway

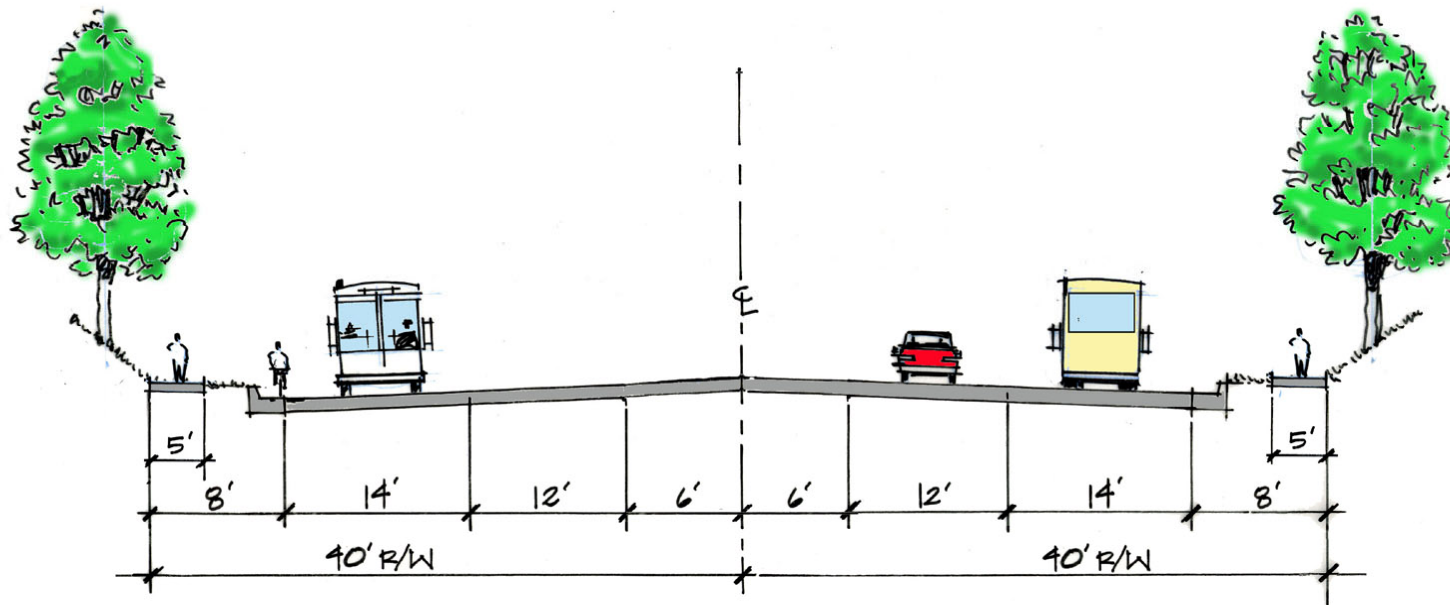


Bus Section 2 - Exclusive Busway on New Alignment

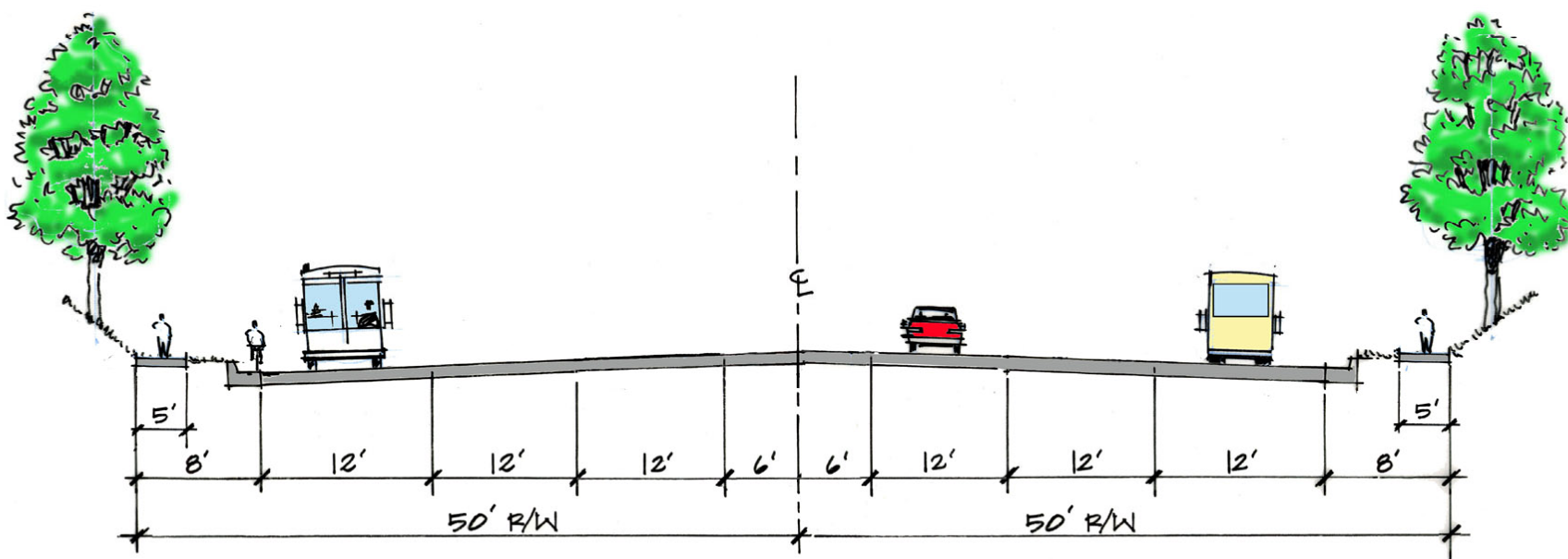


Bus Section 3 - Exclusive Busway on Erwin Road (Busway Alternatives 1 & 2)

Typical Sections - Bus



Busway/Mixed Traffic Section 1 - Manning Drive (Busway Alternatives 2 & 4 / BMT Alternatives 1 & 2)



Busway/Mixed Traffic Section 2 - Erwin Road BMT Alternative 1