



NCDOT Prioritization 3.0 Project Summary

SPOT ID: B150621

Mode: Bicycle & Pedestrian

Status:
Submitted

SR 1780 (Estes Drive)

From/Cross Street: NC 86 (Martin Luther King Jr. Blvd)

Specific Improvement Type: 1. Off-Road/Separated Linear Bicycle Facility (Bicycle)

To: N. Greensboro Street

Project Category: Division Needs

Length: 1.71718129

TIP#:

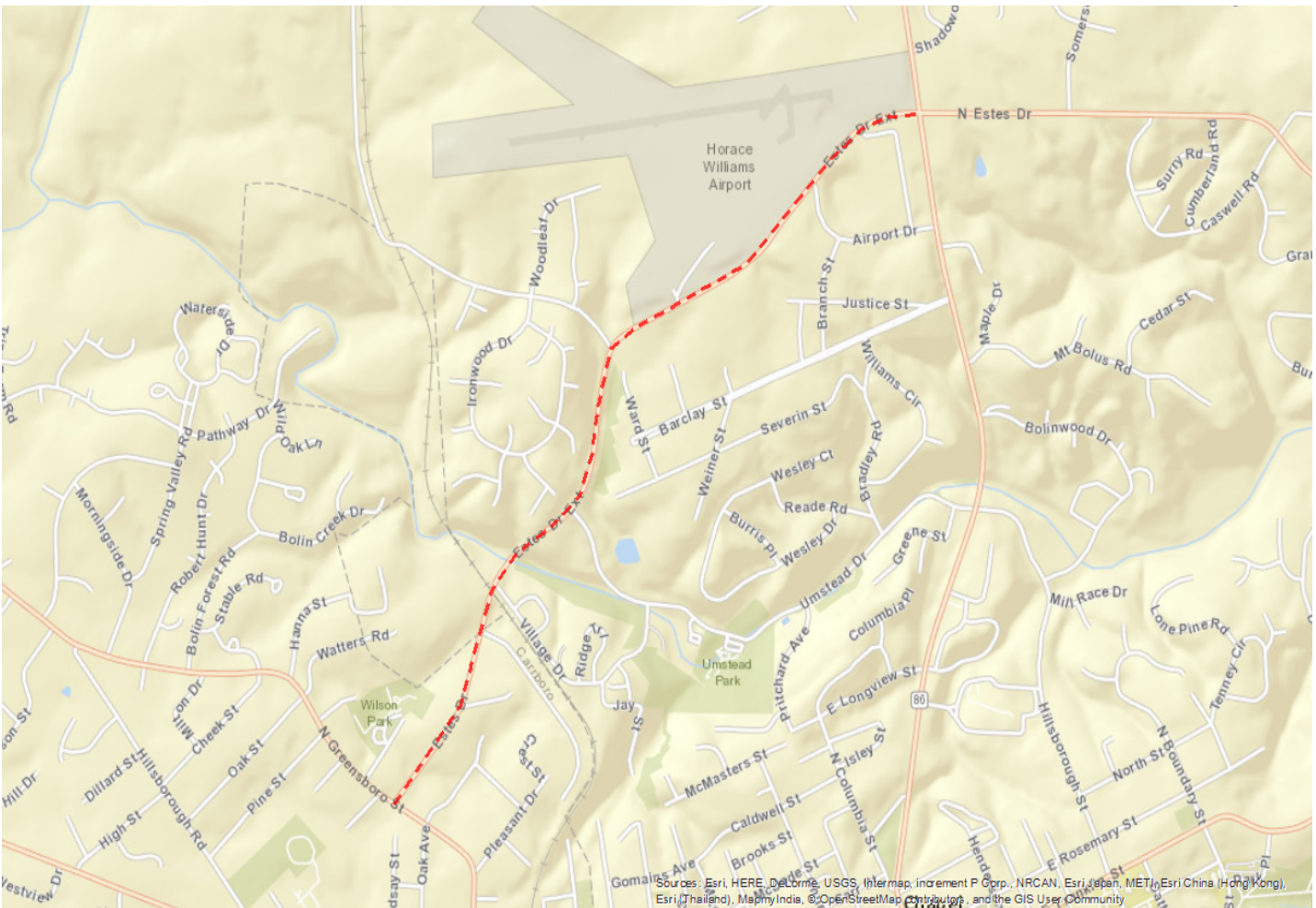
Fully Funded in Draft STIP? No

Cost to NCDOT: \$3,528,826

Description:

Construct multi-use side path and provide striped bike lanes along roadway. The Carrboro section of the project (from N. Greensboro Street to Carrboro Town Limits) includes sidewalks on both side instead of multi-use side paths.

Project Location



Statewide Mobility Total Score

Quantitative Score	Division Engineer Local Input Points	MPO/RPO Local Input Points
N/A		

Regional Impact Total Score

Quantitative Score	Division Engineer Local Input Points	MPO/RPO Local Input Points
N/A		

Division Needs Total Score: 0

Quantitative Score	Division Engineer Local Inputs Points	MPO/RPO Local Input Points
Safety (15%) In Progress Access (10%) In Progress Demand/Density (10%) In Progress Connectivity (10%) In Progress Cost Effectiveness (5%) In Progress	Percent: 25% Points:	Percent: 25% Points:
Totals: Weight: 50% Weighted Score: 0		

Project Data

Data:

Name of Adopted Plan:	Chapel Hill Bike Plan (June 2014)
Discussed with Division:	1
Within 2 mi. of K-8 School?	1
Municipality:	Chapel Hill, NC
Distance to Primary Destination:	1
# Major Centers:	9
# Secondary Centers:	4
Right-of-Way % Acquired:	0
PE / Design % Completed:	0
Environmental Doc. Type:	Categorical Exclusion Type I/II
Bicycle Crashes:	1
Pedestrian Crashes:	0
Existing Speed Limit:	
Persons per Square Mile:	3006.92
Employees per Square Mile:	1343.38

Project Cost:

Construction Cost:	\$3,515,443
Right-of-Way Cost:	\$192,500
Remaining PE/Design Cost:	\$703,089
Total Project Cost:	\$4,411,032
Other Funding:	\$882,206
Other Funding Source:	
Cost to NCDOT:	\$3,528,826

Project Ownership:

First Division:	Division 7
First Division %:	100
Second Division:	
Second Division %:	0
Third Division:	
Third Division %:	0
First MPO/RPO:	Durham Chapel Hill Carrboro MPO
First MPO/RPO %:	100
Second MPO/RPO:	
Second MPO/RPO %:	0
Third MPO/RPO:	
Third MPO/RPO %:	0

THIS PAGE INTENTIONALLY LEFT BLANK