



NCDOT Prioritization 3.0 Project Summary

SPOT ID: R150312

Mode: Rail

Status: Submitted

NS H line

Specific Improvement Type: Highway-rail crossing improvement

Project Category: Statewide Mobility

TIP #:

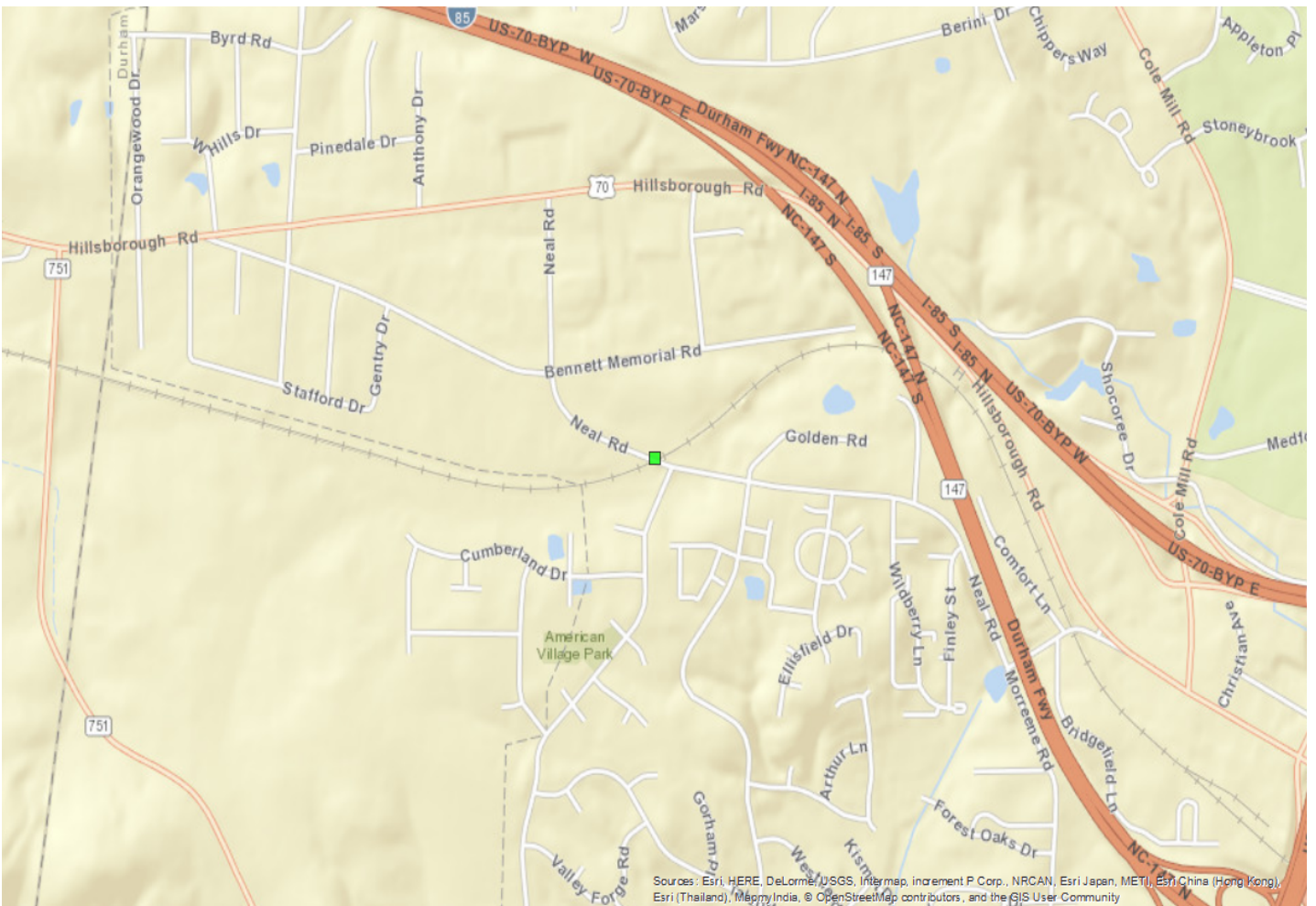
Fully Funded in Draft STIP? No

Cost to NCDOT: \$1

Description:

construct grade separation at Neal Rd. Cost information does not exist at this time and a placeholder value of \$1 was used in the cost estimating screen

Project Location



Sources: Esri, HERE, DeLorme, USGS, Intermap, increment P Corp., NRCAN, Esri Japan, METI, Esri China (Hong Kong), Esri (Thailand), Swappa, India, © OpenStreetMap contributors, and the GIS User Community

Statewide Mobility Total Score: 0

Quantitative Score	Division Engineer Local Input Points	MPO/RPO Local Input Points
Totals: Weight: 0% Weighted Score: 0	N/A	N/A

Regional Impact Total Score: 0

Quantitative Score	Division Engineer Local Input Points	MPO/RPO Local Input Points
Totals: Weight: 0% Weighted Score: 0	Percent: 15% Points: 0	Percent: 15% Points: 0

Division Needs Total Score: 0

Quantitative Score	Division Engineer Local Input Points	MPO/RPO Local Input Points
Totals: Weight: 0% Weighted Score: 0	Percent: 25% Points: 0	Percent: 25% Points: 0

Project Data

Project Ownership:

First Division:	
First Division Percent:	0
Second Division:	
Second Division Percent:	0
Third Division:	
Third Division Percent:	0
First MPO/RPO:	
First MPO/RPO Percent:	0
Second MPO/RPO:	
Second MPO/RPO Percent:	0
Third MPO/RPO:	
Third MPO/RPO Percent:	0

Project Cost:

Total Project Cost:	\$1
Other Funding:	\$0
Other Funding Source:	
Cost to NCDOT:	\$1

THIS PAGE INTENTIONALLY LEFT BLANK