



# NCDOT Prioritization 3.0 Project Summary

SPOT ID: R150324

Mode: Rail

Status: Submitted

## NS H line

**Specific Improvement Type:** Freight rail infrastructure improvement or construction

**Project Category:** Statewide Mobility

**TIP #:**

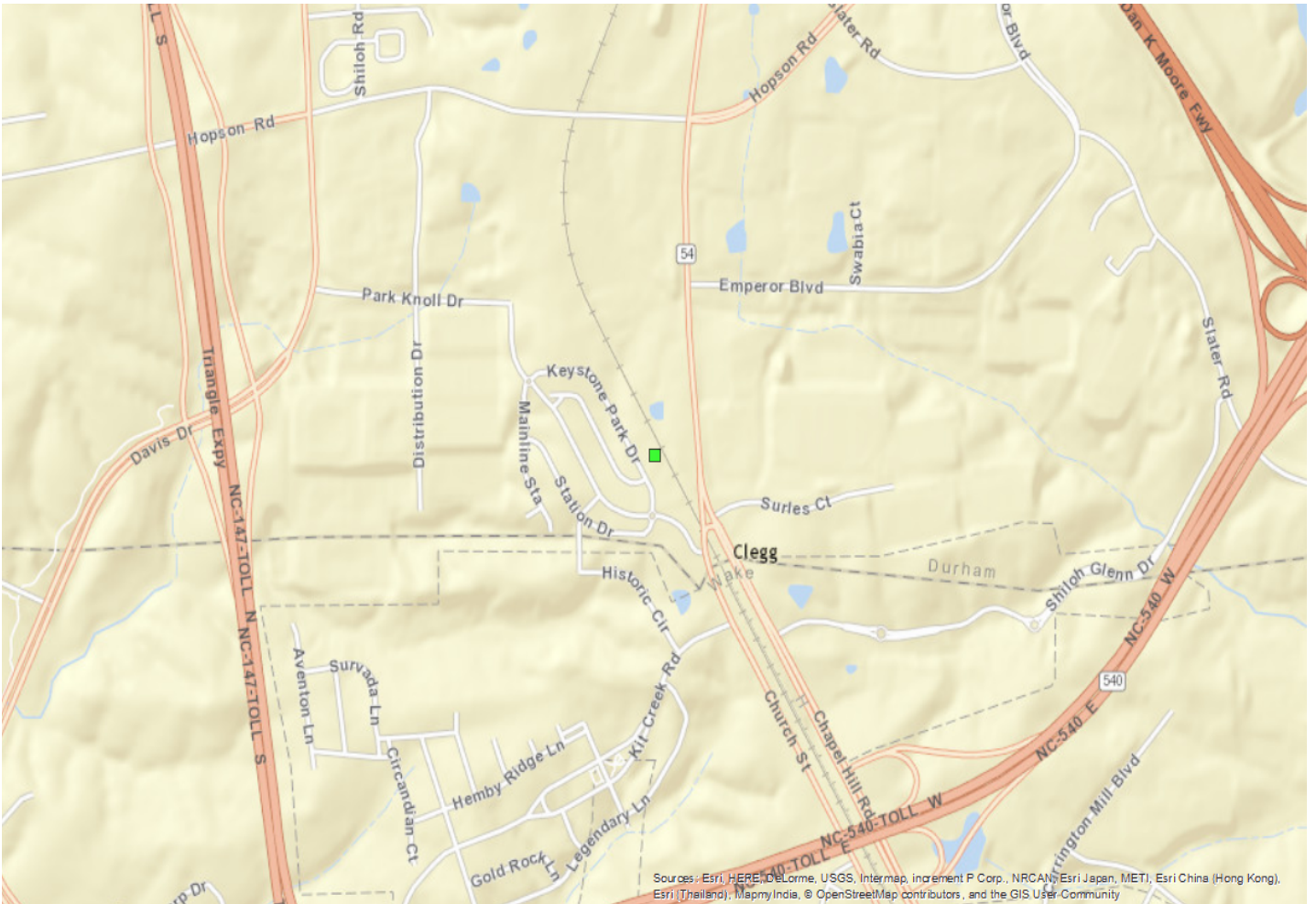
Fully Funded in Draft STIP? No

Cost to NCDOT: \$1

### Description:

Construct a double track (control point Fetter) to SR 751 at Duke Forest (cp Funston). Segment 3: Clegg to Fetter. Cost information does not exist at this time and a placeholder value of \$1 was used in the cost estimating screen.

### Project Location



**Statewide Mobility Total Score: 0**

<b>Quantitative Score</b>	<b>Division Engineer Local Input Points</b>	<b>MPO/RPO Local Input Points</b>
<b>Totals: Weight: 0% Weighted Score: 0</b>	N/A	N/A

**Regional Impact Total Score: 0**

<b>Quantitative Score</b>	<b>Division Engineer Local Input Points</b>	<b>MPO/RPO Local Input Points</b>
<b>Totals: Weight: 0% Weighted Score: 0</b>	Percent: 15% Points: 0	Percent: 15% Points: 0

**Division Needs Total Score: 0**

<b>Quantitative Score</b>	<b>Division Engineer Local Input Points</b>	<b>MPO/RPO Local Input Points</b>
<b>Totals: Weight: 0% Weighted Score: 0</b>	Percent: 25% Points: 0	Percent: 25% Points: 0

## Project Data

### Project Ownership:

First Division:	
First Division Percent:	0
Second Division:	
Second Division Percent:	0
Third Division:	
Third Division Percent:	0
First MPO/RPO:	
First MPO/RPO Percent:	0
Second MPO/RPO:	
Second MPO/RPO Percent:	0
Third MPO/RPO:	
Third MPO/RPO Percent:	0

### Project Cost:

Total Project Cost:	\$1
Other Funding:	\$0
Other Funding Source:	
<b>Cost to NCDOT:</b>	\$1

THIS PAGE INTENTIONALLY LEFT BLANK