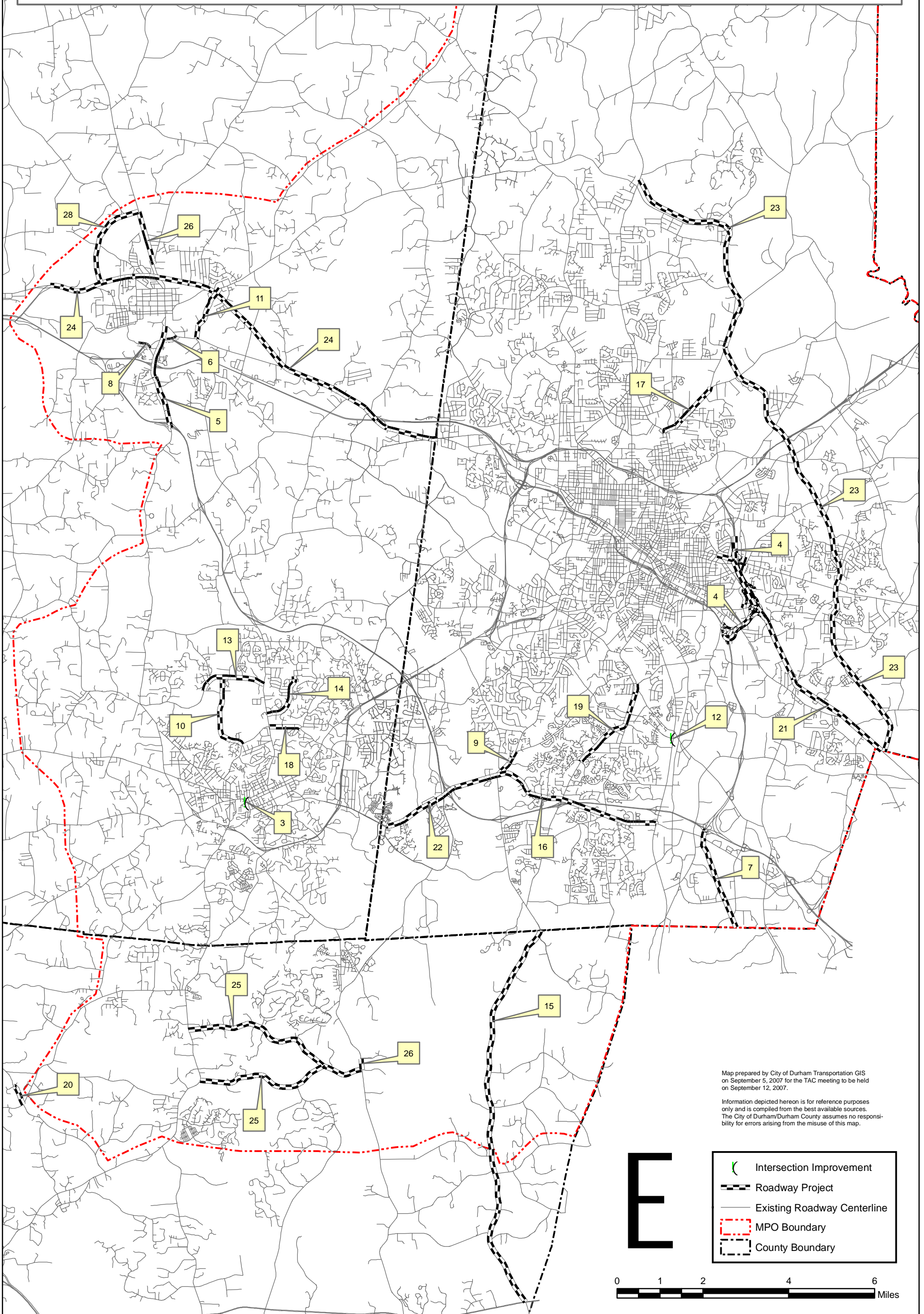


HIGHWAY PROJECTS






Rank	Name	Local Priority #	1: Travel Demand			2: Safety			3: Environmental Impacts		4: Community Impacts		5: Environmental Justice Impacts		6: Funding Status		7: Benefits to Other Modes or Deployment of New Technology		Total Points
			v/c	v/c >0.8?	Points	Accident Rate	Accident Rate>300?	Points	Impact	Points	Impact	Points	Impact	Points	Percent funded	Points	Number of modes	Points	
1	TDM	12 - D 12 - DC	Other	Other	4	Other	Other	4	Positive	4	Positive	4	Positive	4	Unfunded	0	4	4	24
2	ITS Deployment	11 - D 11 - DC	Other	Other	4	Other	Other	4	Positive	4	Positive	4	Positive	4	Unfunded	0	2	2	22
3	Franklin/Main/Merritt Mill/Brewer Intersection	11 - C	1.04	1.04	2	879.59	879.59	3	Positive	4	Positive	4	Positive	4	Unfunded	0	3	3	20
4	East End Connector	1 - D 1 - DC	1.63	1.63	4	2016.03	2016.03	4	LowNeg	3	MedHNeg	1	MedNeg	1	25%+	4	2	2	19
5	S. Churton St. Improvements	2 - H, 2 - OC	1.3	1.3	4	429	429	2	LowNeg	3	Positive	4	Positive	4	Unfunded	0	2	2	19
6	Orange Grove Rd. Extension	6 - OC	0.93	0.93	1	1253.5	1253.5	4	Positive	4	Positive	4	Positive	4	Unfunded	0	2	2	19
7	Triangle Parkway	3 - D 3 - DC	1.04	1.04	2	351.61	351.61	1	MedHNeg	1	LowNeg	3	Neutral	3	25%+	4	3	3	17
8	Eno Mt./Mayo St. at Orange Grove Rd. Realignment	4 - H, 5 - OC	0.82	0.82	1	2146	2146	4	Positive	4	MedNeg	2	Positive	4	Unfunded	0	2	2	17
9	NC 751 (Phase 1) Widening	9 - D 9 - DC	1.17	1.17	3	913.86	913.86	3	LowNeg	3	MedNeg	2	Neutral	3	Unfunded	0	3	3	17
10	Seawell School Road Improvements	1 - C; 2 - CH	0.3	no	0	409.12	409.12	1	Positive	4	Positive	4	Positive	4	Unfunded	0	3	3	16
11	Elizabeth Brady Rd. Extension	1 - H	1.19	1.19	3	489.26	489.26	2	HighNeg	0	MedHNeg	1	Neutral	3	25%+	4	3	3	16
12	MLK Jr Pwky/Hwy 55 Intersection	2 - D 2 - DC	0.93	0.93	1	3342	3342	4	LowNeg	3	LowNeg	3	LowNeg	2	Unfunded	0	3	3	16
13	Homestead Road Improvements	1 - CH, 1 - OC, 2 - C	0.97	0.97	1	278.67	no	0	Positive	4	Positive	4	Positive	4	Unfunded	0	2	2	15
14	Piney Mountain Road Improvements	4 - CH	0.57	no	0	109.56	no	0	Positive	4	Positive	4	Positive	4	Unfunded	0	3	3	15
15	NC 751 Widening	1 - CC	1.31	1.31	4	151.6	no	0	LowNeg	3	LowNeg	3	Neutral	3	Unfunded	0	1	1	14
16	NC 54 (I-40 east to 55) Widening	5 - D 5 - DC	1.19	1.19	3	664.28	664.28	2	HighNeg	0	LowNeg	3	Neutral	3	Unfunded	0	3	3	14
17	Old Oxford Highway Widening	8 - D 8 - DC	1.2	1.2	3	826.16	826.16	3	LowNeg	3	MedNeg	2	HighNeg	0	Unfunded	0	3	3	14
18	Estes Drive Improvements	3 - CH	1.01	1.01	2	405.15	405.15	1	Positive	4	Positive	4	Positive	4	Unfunded	0	2	2	13
19	Fayetteville Road Widening	4 - D 4 - DC	1.11	1.11	2	700.42	700.42	3	LowNeg	3	MedHNeg	1	MedNeg	1	Unfunded	0	3	3	13
20	Perry Harrison School Turn Lanes	4 - CC	0.16	no	0	1072.1	1072.1	4	LowNeg	3	LowNeg	3	Neutral	3	Unfunded	0	0	0	13
21	US 70 (Lynn Rd. to Wake County Line) Convert to Freeway	6 - D 6 - DC	1.24	1.24	4	297.97	no	0	MedNeg	2	LowNeg	3	Neutral	3	Unfunded	0	1	1	13
22	NC 54 (I-40 to Barbee-Chapel) Widening	10 - D 10 - DC	1.89	1.89	4	256.29	no	0	HighNeg	0	LowNeg	3	Neutral	3	Unfunded	0	3	3	13
23	Northern Durham Parkway	7 - D 7 - DC	1.24	1.24	4	669.05	669.05	2	HighNeg	0	MedHNeg	1	LowNeg	2	Unfunded	0	3	3	12

2009-2015 TIP-Draft Regional Priority List Highway Projects Project Ranking



Map prepared by City of Durham Transportation GIS on September 5, 2007 for the TAC meeting to be held on September 12, 2007.

Information depicted herein is for reference purposes only and is compiled from the best available sources. The City of Durham/Durham County assumes no responsibility for errors arising from the misuse of this map.

-  Intersection Improvement
-  Roadway Project
-  Existing Roadway Centerline
-  MPO Boundary
-  County Boundary

0 1 2 4 6 Miles