



NCDOT Prioritization 3.0 Project Summary

SPOT ID: B150150

Mode: Bicycle & Pedestrian

Status:
Submitted

O'Kelly Chapel Rd Side St Trail

From/Cross Street: American Tobacco Trail

Specific Improvement Type: 5. Protected Linear Pedestrian Facility (Pedestrian)

To: Green Level Church Rd (SR 1630)

Project Category: Division Needs

Length: 1.53560457

TIP#:

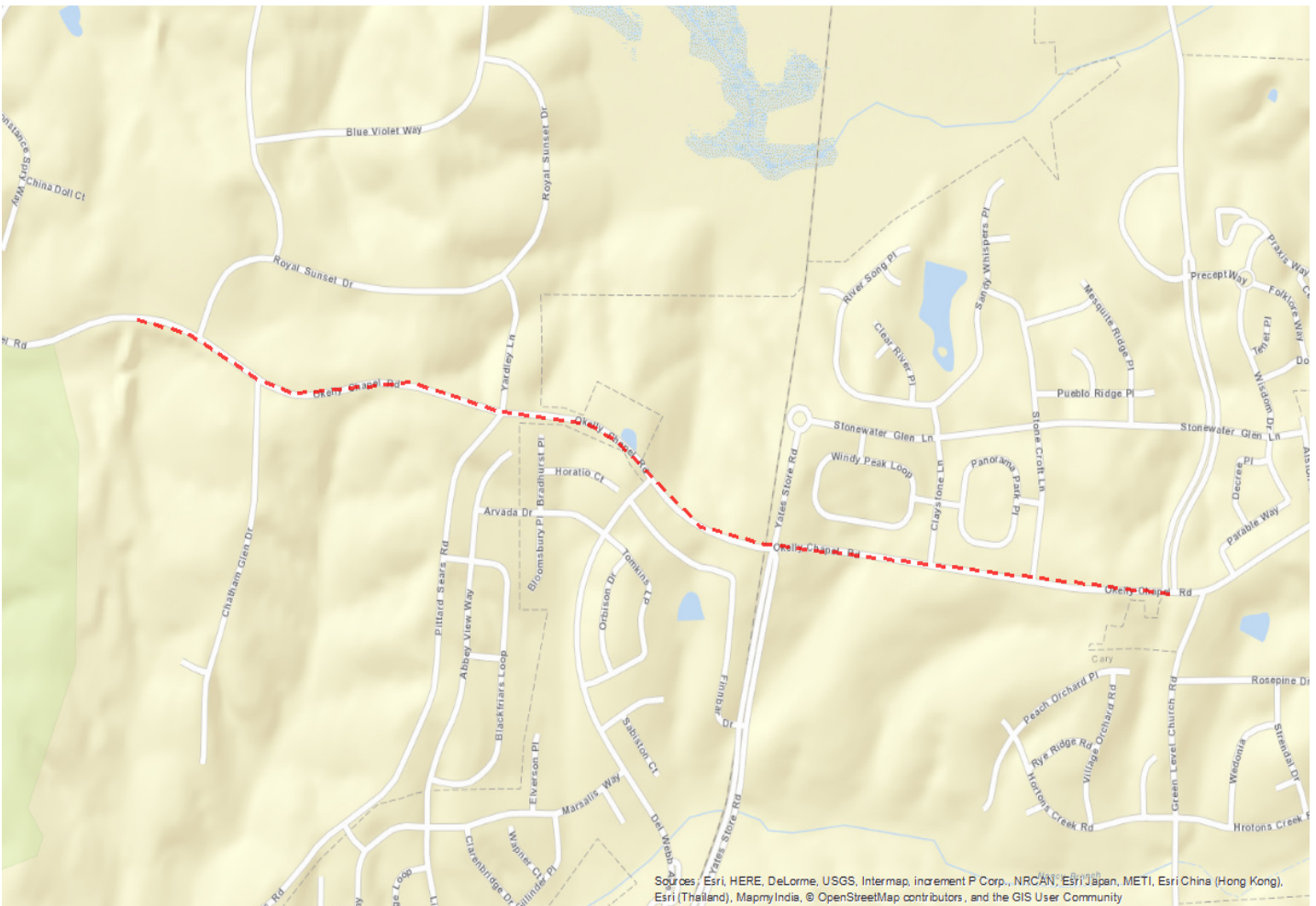
Fully Funded in Draft STIP? No

Cost to NCDOT: \$2,001,818

Description:

Construct 10' wide Streetside trail along O'Kelly Chapel Rd between existing trail at Green Level Church Rd and American Tobacco Trail

Project Location



Statewide Mobility Total Score

Quantitative Score	Division Engineer Local Input Points	MPO/RPO Local Input Points
N/A		

Regional Impact Total Score

Quantitative Score	Division Engineer Local Input Points	MPO/RPO Local Input Points
N/A		

Division Needs Total Score: 0

Quantitative Score	Division Engineer Local Inputs Points	MPO/RPO Local Input Points
Safety (15%) In Progress Access (10%) In Progress Demand/Density (10%) In Progress Connectivity (10%) In Progress Cost Effectiveness (5%) In Progress	Percent: 25% Points:	Percent: 25% Points:
Totals: Weight: 50% Weighted Score: 0		

Project Data

Data:

Name of Adopted Plan:	Cary PRCR Master Plan 2012
Discussed with Division:	1
Within 2 mi. of K-8 School?	1
Municipality:	Chatham County, Cary
Distance to Primary Destination:	0
# Major Centers:	6
# Secondary Centers:	5
Right-of-Way % Acquired:	45
PE / Design % Completed:	20
Environmental Doc. Type:	Categorical Exclusion Type I/II
Bicycle Crashes:	0
Pedestrian Crashes:	0
Existing Speed Limit:	
Persons per Square Mile:	846.21
Employees per Square Mile:	28.57

Project Cost:

Construction Cost:	\$1,443,561
Right-of-Way Cost:	\$770,000
Remaining PE/Design Cost:	\$288,712
Total Project Cost:	\$2,502,273
Other Funding:	\$500,455
Other Funding Source:	
Cost to NCDOT:	\$2,001,818

Project Ownership:

First Division:	Division 8
First Division %:	64
Second Division:	Division 5
Second Division %:	36
Third Division:	
Third Division %:	0
First MPO/RPO:	Durham Chapel Hill Carrboro MPO
First MPO/RPO %:	64
Second MPO/RPO:	Capital Area MPO
Second MPO/RPO %:	36
Third MPO/RPO:	
Third MPO/RPO %:	0

THIS PAGE INTENTIONALLY LEFT BLANK