



NCDOT Prioritization 3.0 Project Summary

SPOT ID: B150147

Mode: Bicycle & Pedestrian

Status:
Submitted

Pittard Sears

From/Cross Street: O'Kelly Chapel Rd

Specific Improvement Type: 5. Protected Linear Pedestrian Facility (Pedestrian)

To: trailhead at American Tobacco Trail

Project Category: Division Needs

Length: 1.08489818

TIP#:

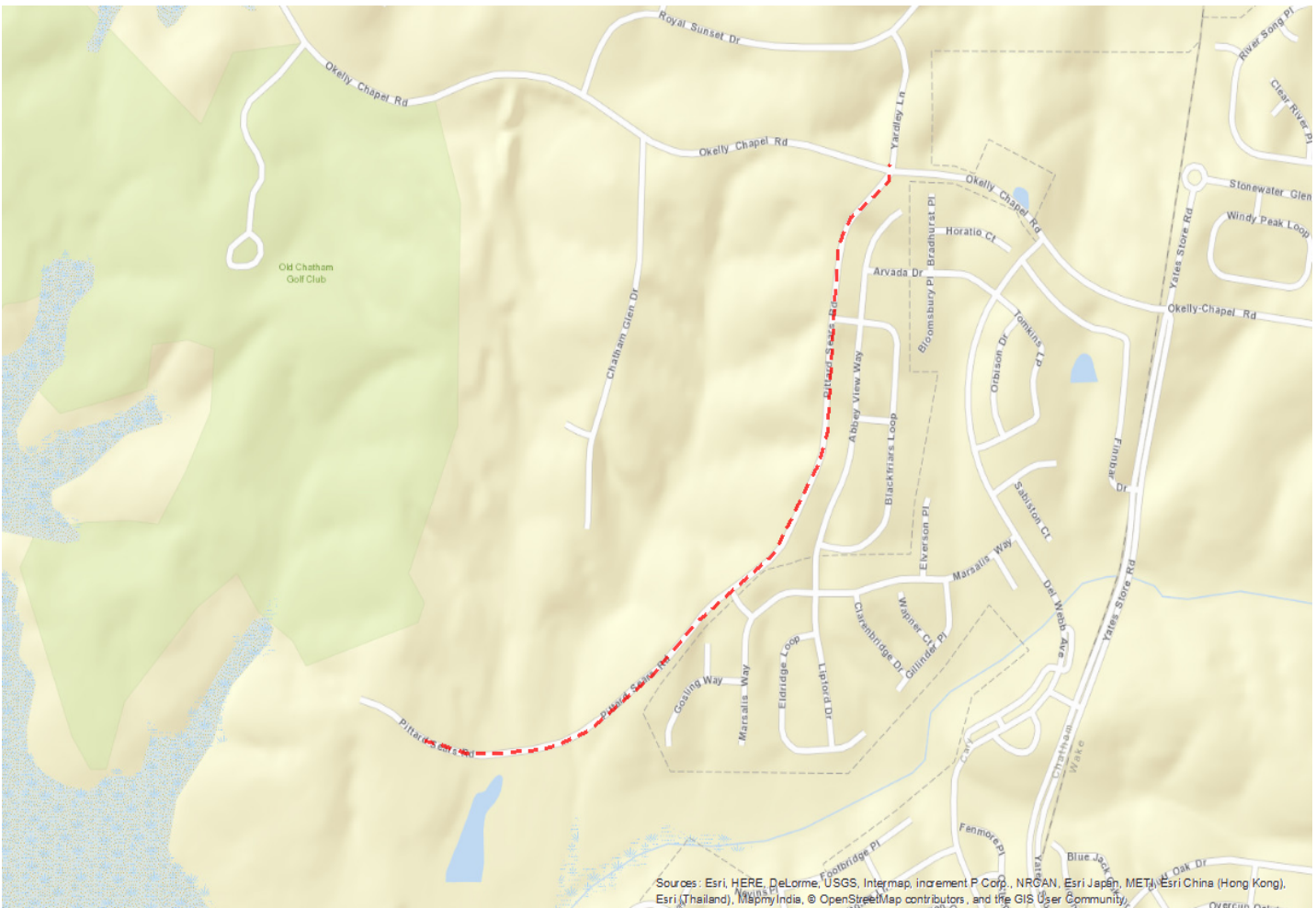
Fully Funded in Draft STIP? No

Cost to NCDOT: \$1,940,657

Description:

construct sidewalk along western side of Pittard Sears Rd between O'Kelly Chapel Rd and trailhead

Project Location



Statewide Mobility Total Score

Quantitative Score	Division Engineer Local Input Points	MPO/RPO Local Input Points
N/A		

Regional Impact Total Score

Quantitative Score	Division Engineer Local Input Points	MPO/RPO Local Input Points
N/A		

Division Needs Total Score: 0

Quantitative Score	Division Engineer Local Inputs Points	MPO/RPO Local Input Points
Safety (15%) In Progress Access (10%) In Progress Demand/Density (10%) In Progress Connectivity (10%) In Progress Cost Effectiveness (5%) In Progress	Percent: 25% Points:	Percent: 25% Points:
Totals: Weight: 50% Weighted Score: 0		

Project Data

Data:

Name of Adopted Plan:	DRAFT Town of Cary CTP update expected to be adopted in 2016
Discussed with Division:	1
Within 2 mi. of K-8 School?	1
Municipality:	Chatham County, Cary
Distance to Primary Destination:	0
# Major Centers:	3
# Secondary Centers:	3
Right-of-Way % Acquired:	0
PE / Design % Completed:	0
Environmental Doc. Type:	Categorical Exclusion Type I/II
Bicycle Crashes:	0
Pedestrian Crashes:	0
Existing Speed Limit:	
Persons per Square Mile:	241.69
Employees per Square Mile:	15.87

Project Cost:

Construction Cost:	\$1,089,434
Right-of-Way Cost:	\$1,118,500
Remaining PE/Design Cost:	\$217,887
Total Project Cost:	\$2,425,821
Other Funding:	\$485,164
Other Funding Source:	
Cost to NCDOT:	\$1,940,657

Project Ownership:

First Division:	Division 8
First Division %:	100
Second Division:	
Second Division %:	0
Third Division:	
Third Division %:	0
First MPO/RPO:	Durham Chapel Hill Carrboro MPO
First MPO/RPO %:	100
Second MPO/RPO:	
Second MPO/RPO %:	0
Third MPO/RPO:	
Third MPO/RPO %:	0

THIS PAGE INTENTIONALLY LEFT BLANK