



# NCDOT Prioritization 3.0 Project Summary

**SPOT ID:** B141113

**Mode:** Bicycle & Pedestrian

**Status:**  
Submitted

## NC 157 (Guess Road)

**From/Cross Street:** Hillcrest St

**Specific Improvement Type:** 5. Protected Linear Pedestrian Facility (Pedestrian)

**To:** W Carver St

**Project Category:** Division Needs

**Length:** 1.13848884

**TIP#:**

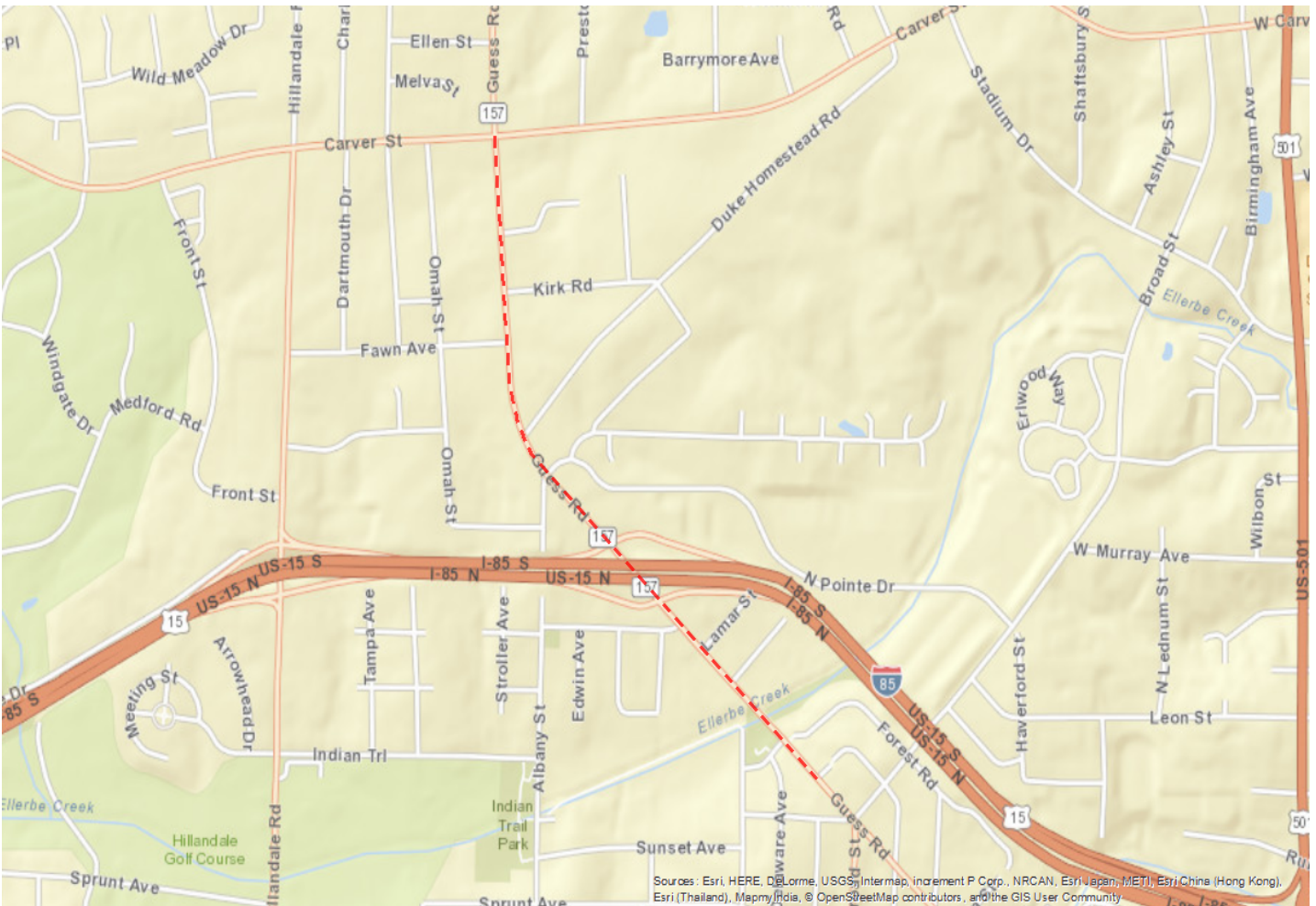
**Fully Funded in Draft STIP?** No

**Cost to NCDOT:** \$728,937

### Description:

Construct sidewalks on both sides of Guess Rd. to fill in sidewalk gaps.

### Project Location



**Statewide Mobility Total Score**

| Quantitative Score | Division Engineer Local Input Points | MPO/RPO Local Input Points |
|--------------------|--------------------------------------|----------------------------|
| N/A                |                                      |                            |

**Regional Impact Total Score**

| Quantitative Score | Division Engineer Local Input Points | MPO/RPO Local Input Points |
|--------------------|--------------------------------------|----------------------------|
| N/A                |                                      |                            |

**Division Needs Total Score: 0**

| Quantitative Score   | Division Engineer Local Inputs Points | MPO/RPO Local Input Points |
|--|---------------------------------------|----------------------------|
| Safety (15%)                      In Progress<br>Access (10%)                      In Progress<br>Demand/Density (10%)            In Progress<br>Connectivity (10%)                In Progress<br>Cost Effectiveness (5%)            In Progress | Percent: 25%<br>Points:               | Percent: 25%<br>Points:    |
| <b>Totals: Weight: 50% Weighted Score: 0</b>   |                                       |                            |

## Project Data

**Data:**

|                                  |                                   |
|----------------------------------|-----------------------------------|
| Name of Adopted Plan:            | Durham Walks Pedestrian Plan 2006 |
| Discussed with Division:         | 1                                 |
| Within 2 mi. of K-8 School?      | 1                                 |
| Municipality:                    | City of Durham                    |
| Distance to Primary Destination: | 0                                 |
| # Major Centers:                 | 1                                 |
| # Secondary Centers:             | 12                                |
| Right-of-Way % Acquired:         | 95                                |
| PE / Design % Completed:         | 0                                 |
| Environmental Doc. Type:         | Categorical Exclusion Type I/II   |
| Bicycle Crashes:                 | 0                                 |
| Pedestrian Crashes:              | 3                                 |
| Existing Speed Limit:            |                                   |
| Persons per Square Mile:         | 1896.96                           |
| Employees per Square Mile:       | 1156.79                           |

**Project Cost:**

|                           |                  |
|---------------------------|------------------|
| Construction Cost:        | \$589,101        |
| Right-of-Way Cost:        | \$204,250        |
| Remaining PE/Design Cost: | \$117,820        |
| Total Project Cost:       | \$911,171        |
| Other Funding:            | \$182,234        |
| Other Funding Source:     |                  |
| <b>Cost to NCDOT:</b>     | <b>\$728,937</b> |

**Project Ownership:**

|                    |                                    |
|--------------------|------------------------------------|
| First Division:    | Division 5                         |
| First Division %:  | 100                                |
| Second Division:   |                                    |
| Second Division %: | 0                                  |
| Third Division:    |                                    |
| Third Division %:  | 0                                  |
| First MPO/RPO:     | Durham Chapel Hill<br>Carrboro MPO |
| First MPO/RPO %:   | 100                                |
| Second MPO/RPO:    |                                    |
| Second MPO/RPO %:  | 0                                  |
| Third MPO/RPO:     |                                    |
| Third MPO/RPO %:   | 0                                  |

THIS PAGE INTENTIONALLY LEFT BLANK