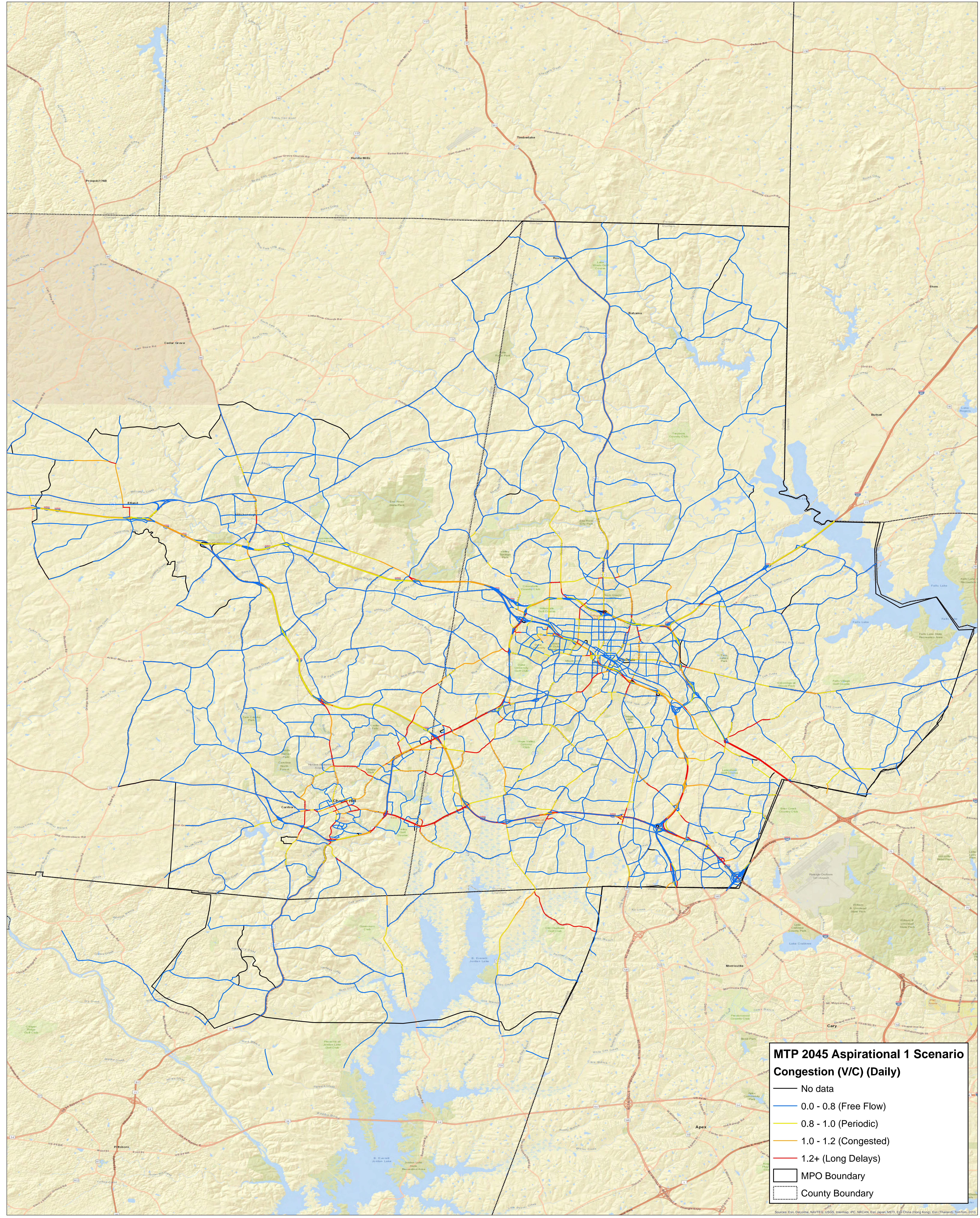


Map depicts roadway congestion assuming the 2045 population and employment using a set of future highway and transit improvements.

MTP 2045 Aspirational 1 Scenario

Congestion Map (volume/capacity)

DCHC MPO
07/24/2017



MTP 2045 Aspirational 1 Scenario
Congestion (V/C) (Daily)

- No data
- 0.0 - 0.8 (Free Flow)
- 0.8 - 1.0 (Periodic)
- 1.0 - 1.2 (Congested)
- 1.2+ (Long Delays)
- MPO Boundary
- County Boundary

Sources: Esri, DeLorme, NAVTEQ, USGS, Intermap, PC, NRCAN, Esri Japan, METI, Esri China (Hong Kong), Esri (Thailand), Swisstopo