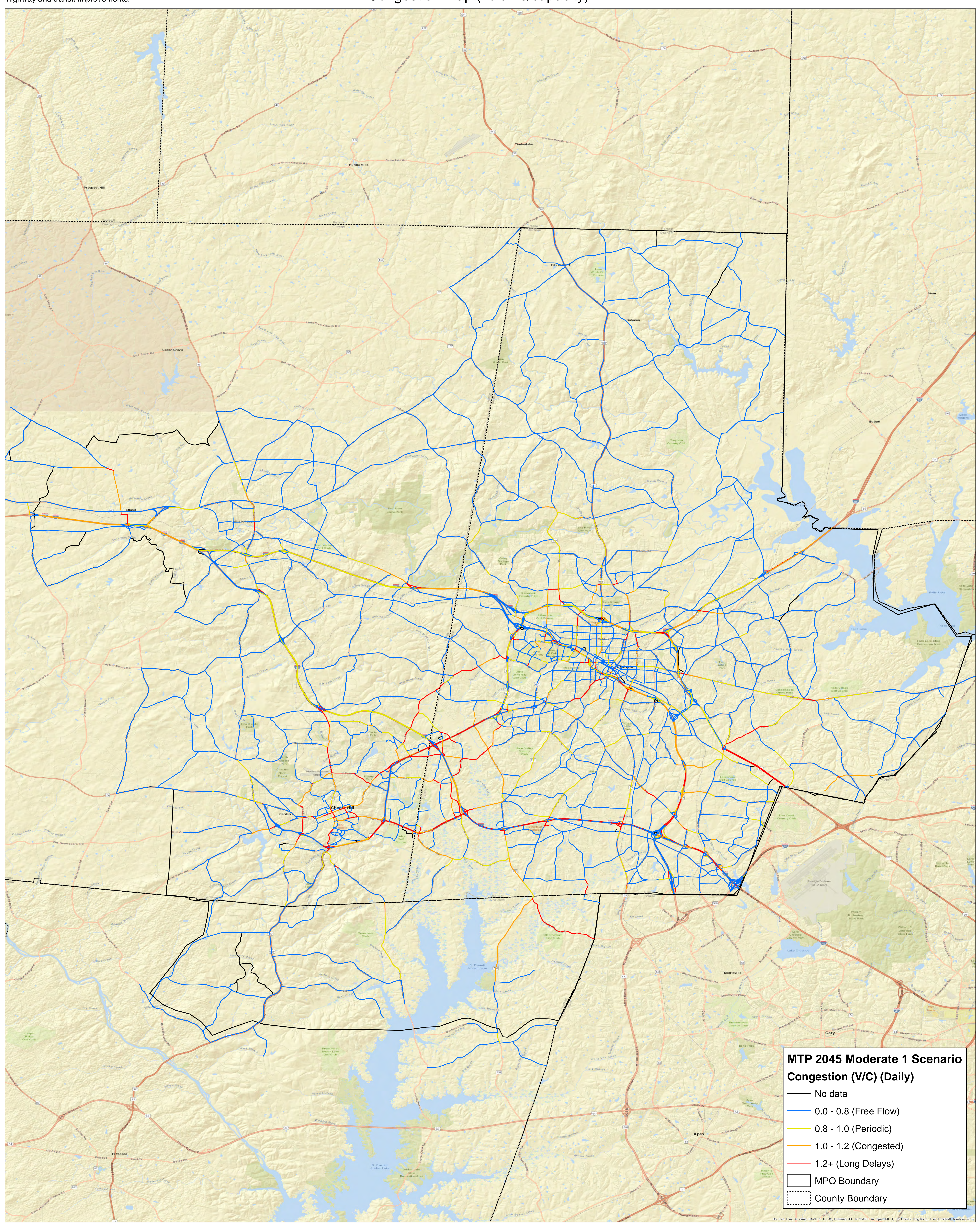


Map depicts roadway congestion assuming the 2045 population and employment using a set of future highway and transit improvements.

# MTP 2045 Moderate 1 Scenario

## Congestion Map (volume/capacity)

DCHC MPO  
07/24/2017



**MTP 2045 Moderate 1 Scenario  
Congestion (V/C) (Daily)**

- No data
- 0.0 - 0.8 (Free Flow)
- 0.8 - 1.0 (Periodic)
- 1.0 - 1.2 (Congested)
- 1.2+ (Long Delays)
- MPO Boundary
- County Boundary

Sources: Esri, DeLorme, NAVTEQ, USGS, Intermap, iPC, NRCAN, Esri Japan, METI, Esri China (Hong Kong), Esri (Thailand), TomTom, 2017