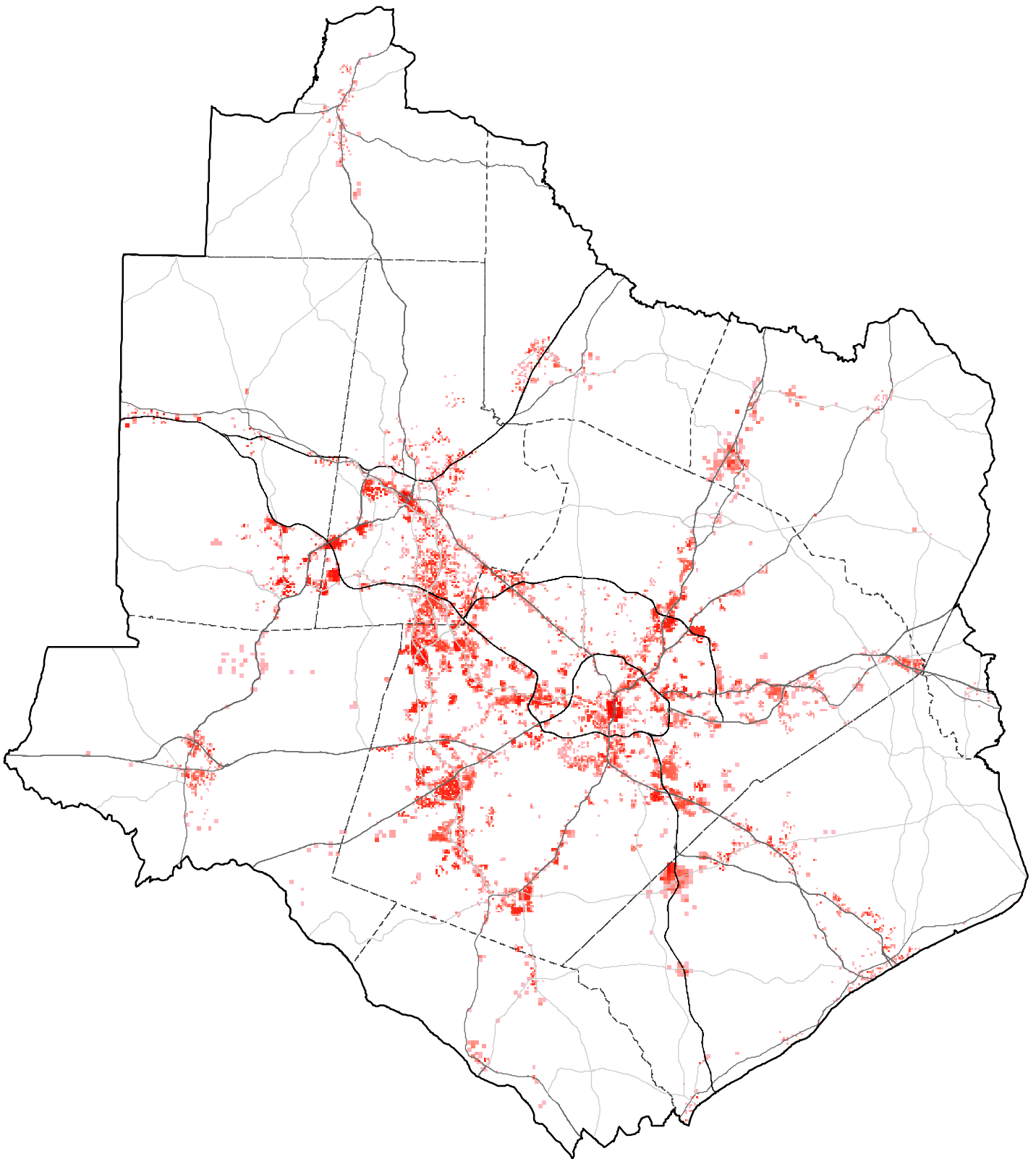


Connect 2045 - Triangle Region Scenario Planning

Community Plans Scenario, 3.22.17



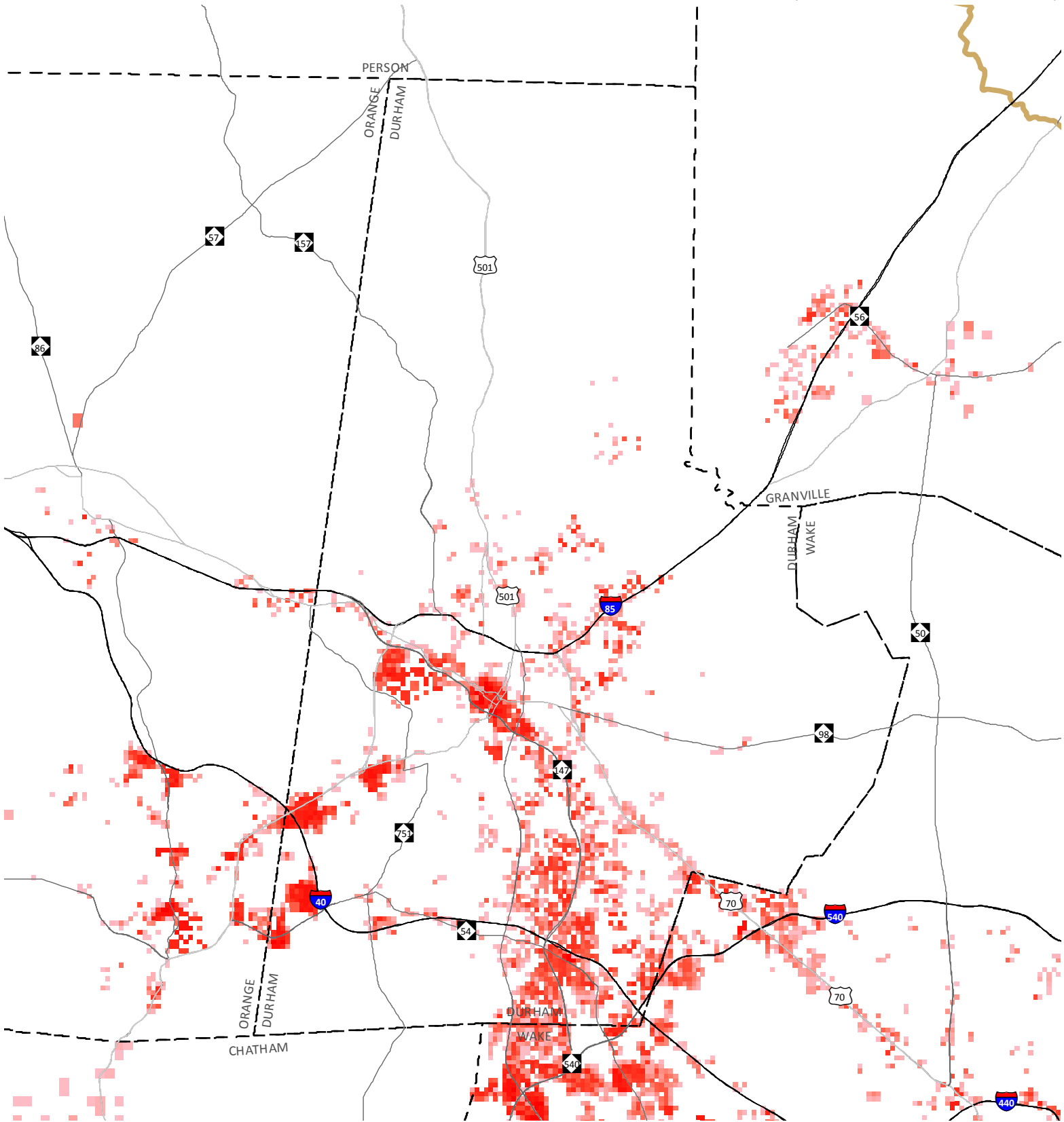
Regional Composite Map - New Employment Distribution - 32-Year Forecast (2013-2045)

- County Boundaries
- Interstates/ Freeways
- US Highways
- NC Highways


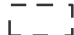




Connect 2045 - Triangle Region Scenario Planning

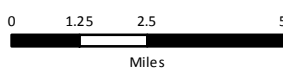
Community Plans Scenario, Durham County



Regional Composite Map - New Employment Distribution - 32-Year Forecast (2013-2045)

 Study Area Boundary (TRM V.6)
 County Boundary

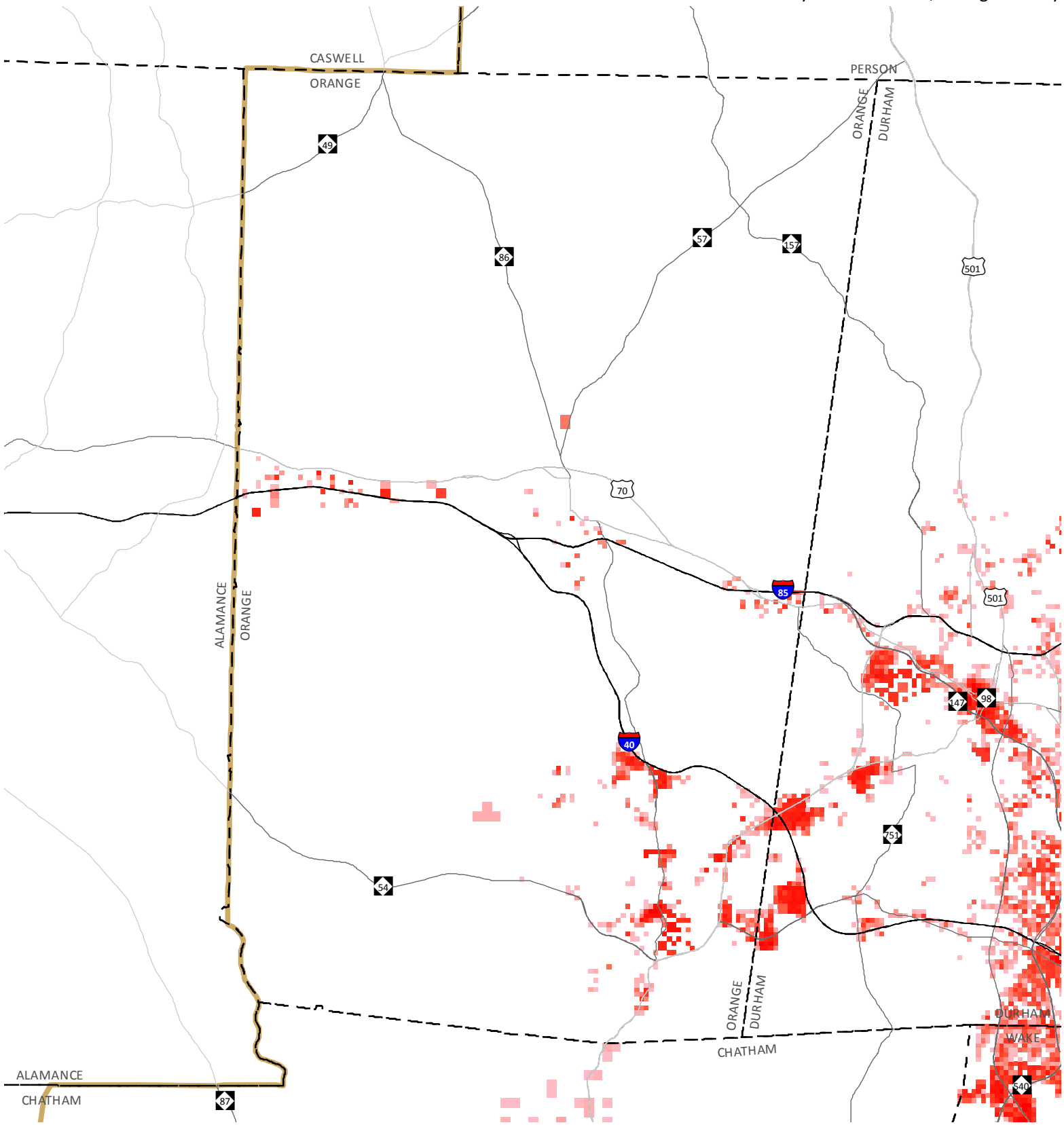
 Interstate
 US Hwy
 State Hwy





See table named "Connect 2045 - Community Plans Output by Jurisdiction" for a summary of household and employment data allocated to individual cities, towns, and counties in the Triangle Region CommunityViz Model.

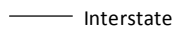

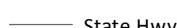
Connect 2045 - Triangle Region Scenario Planning

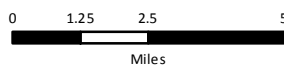
Community Plans Scenario, Orange County



Regional Composite Map - New Employment Distribution - 32-Year Forecast (2013-2045)

-  Study Area Boundary (TRM V.6)
-  County Boundary

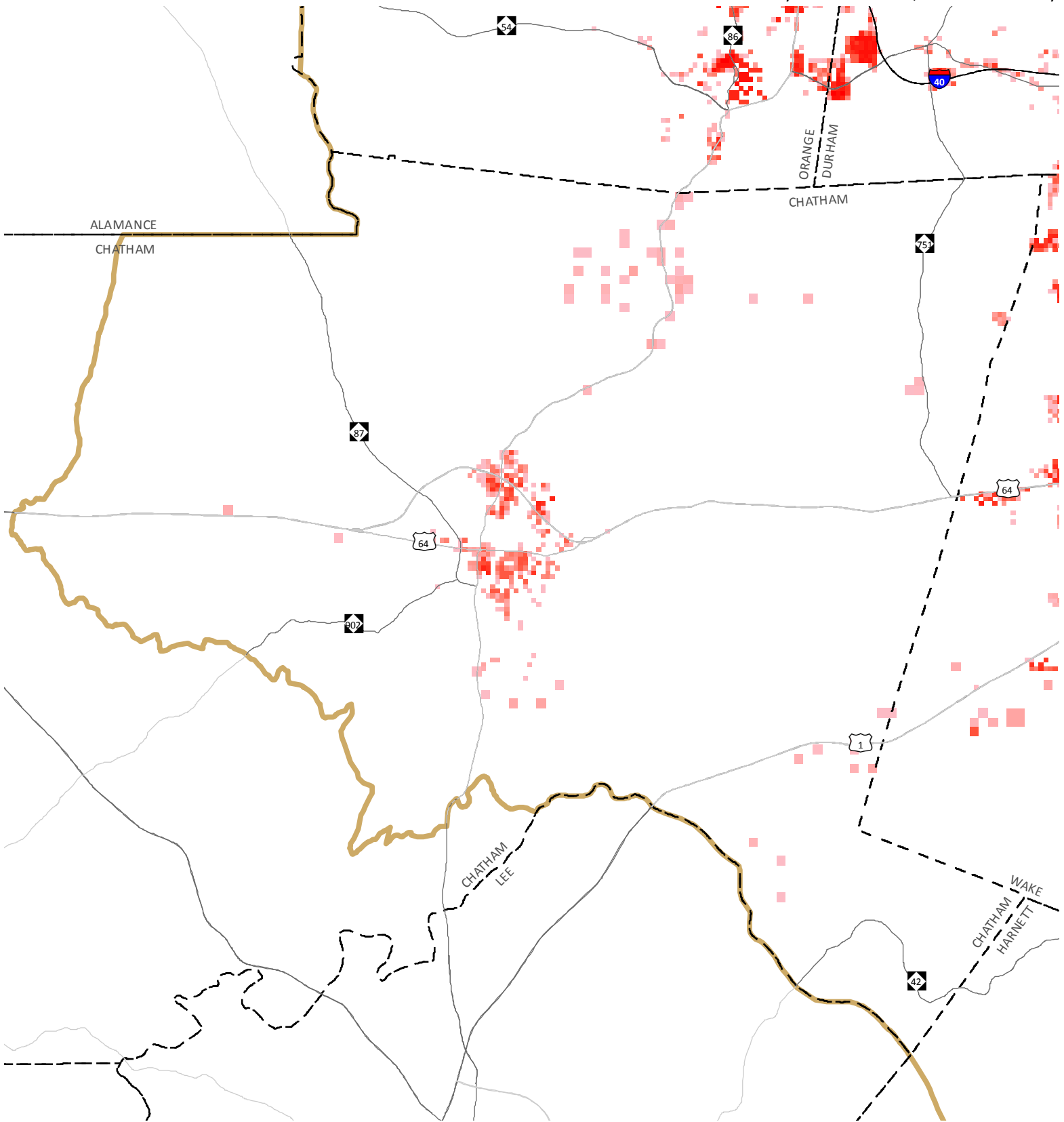
-  Interstate
-  US Hwy
-  State Hwy



See table named "Connect 2045 - Community Plans Output by Jurisdiction" for a summary of household and employment data allocated to individual cities, towns, and counties in the Triangle Region CommunityViz Model.

Connect 2045 - Triangle Region Scenario Planning

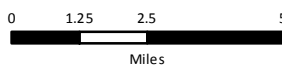
Community Plans Scenario, Chatham County



Regional Composite Map - New Employment Distribution - 32-Year Forecast (2013-2045)

Study Area Boundary (TRM V.6)
 County Boundary

Interstate
 US Hwy
 State Hwy



See table named "Connect 2045 - Community Plans Output by Jurisdiction" for a summary of household and employment data allocated to individual cities, towns, and counties in the Triangle Region CommunityViz Model.