
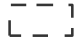
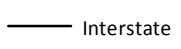
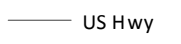
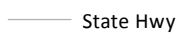



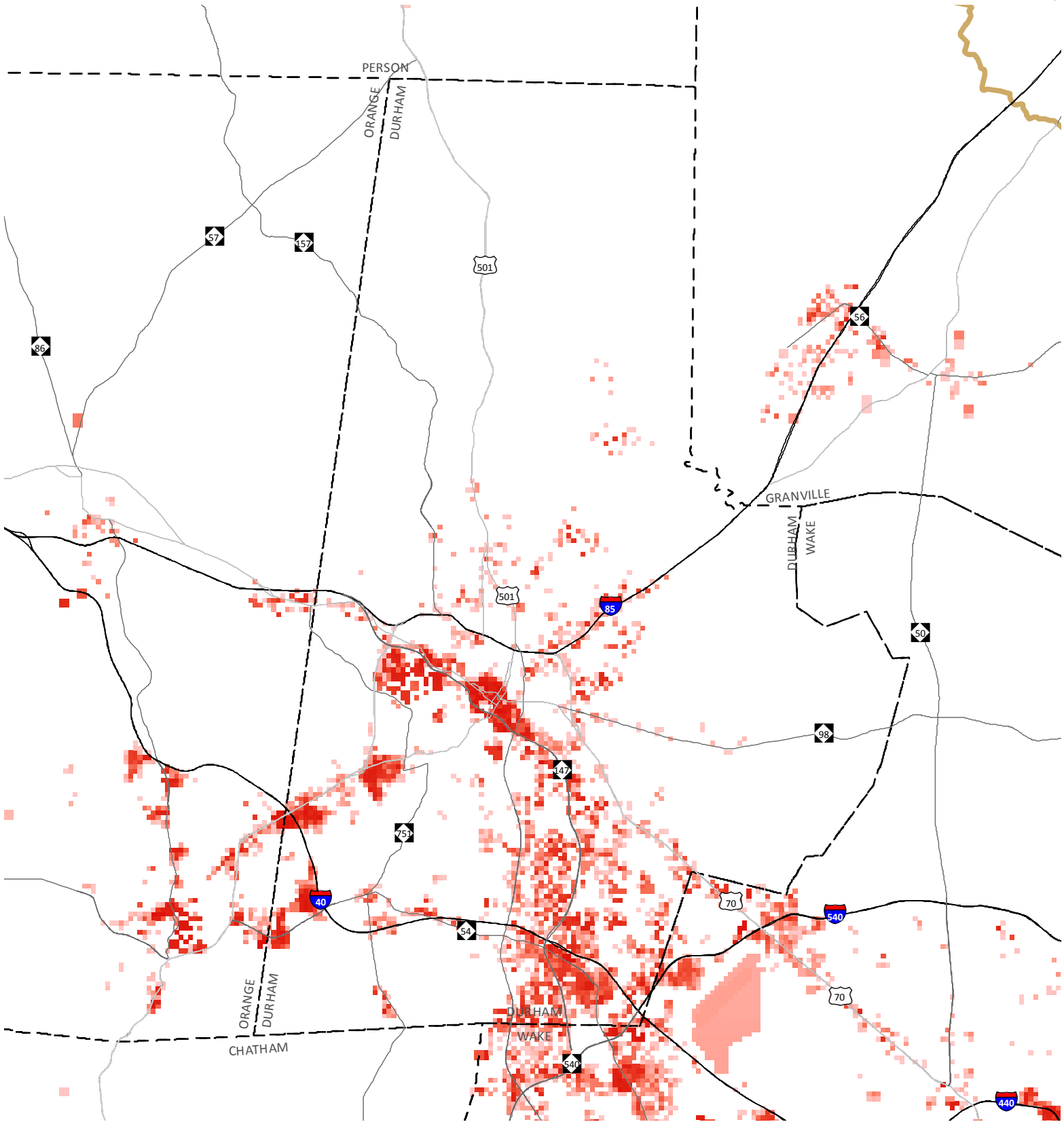


Regional Composite Map - New Employment Distribution - 32-Year Forecast (2013-2045)


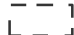
 Study Area Boundary (TRM V.6)  County Boundary	 Interstate  US Hwy  State Hwy	 0 Employees > 2,500
Triangle J Council of Governments Geographic Information Systems 1.2.18	 	See table named "Connect 2045 - Preferred Scenario Output by Jurisdiction" for a summary of household and employment data allocated to individual cities, towns, and counties in the Triangle Region CommunityViz Model.


# Connect 2045 - Triangle Region Scenario Planning

Durham County



Regional Composite Map - New Employment Distribution - 32-Year Forecast (2013-2045)

-  Study Area Boundary (TRM V.6)
-  County Boundary

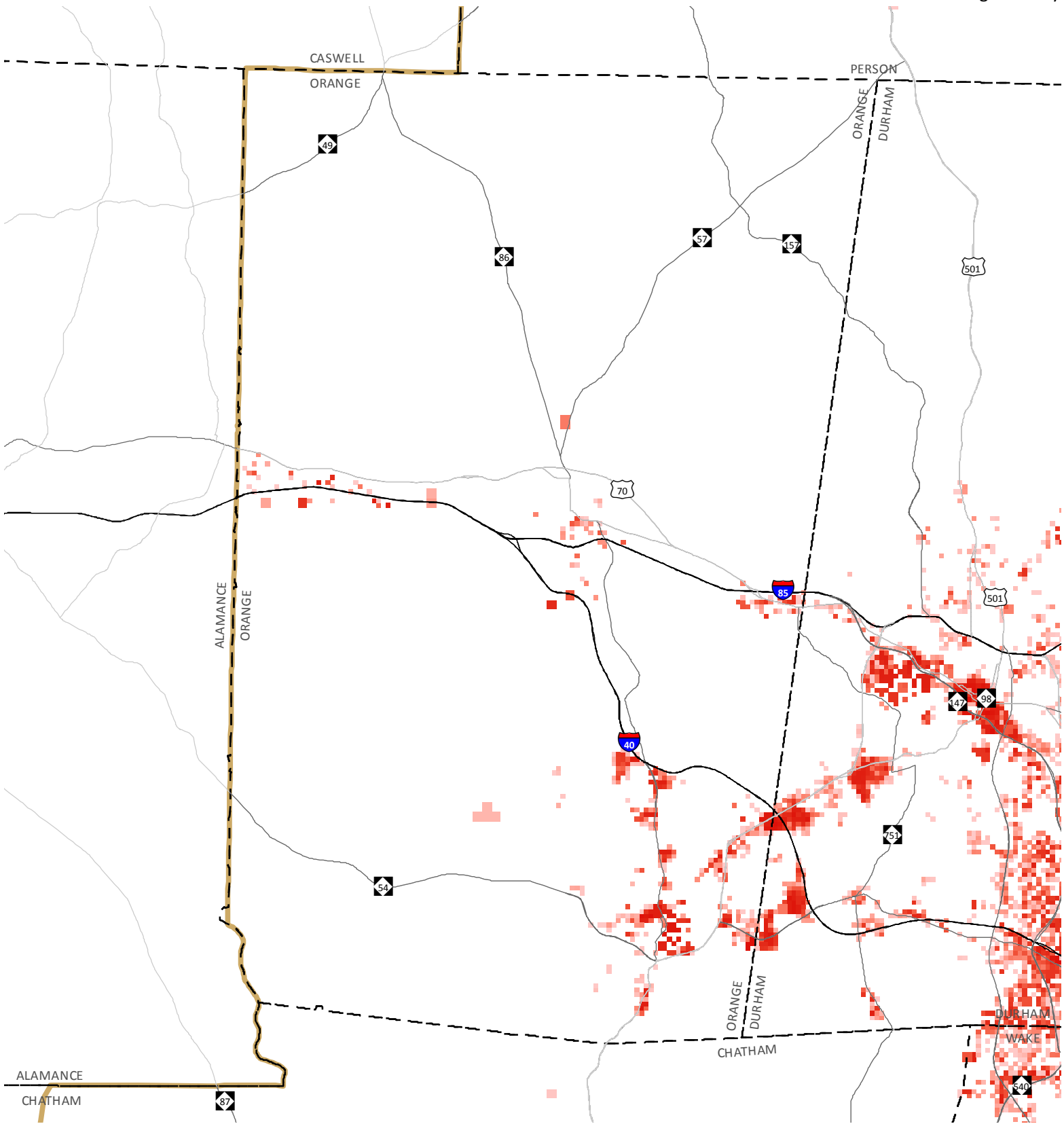
-  Interstate
-  US Hwy
-  State Hwy





See table named "Connect 2045 - Preferred Scenario Output by Jurisdiction" for a summary of household and employment data allocated to individual cities, towns, and counties in the Triangle Region CommunityViz Model.


# Connect 2045 - Triangle Region Scenario Planning

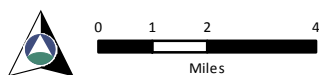
Orange County



Regional Composite Map - New Employment Distribution - 32-Year Forecast (2013-2045)

 Study Area Boundary (TRM V.6)  
 County Boundary

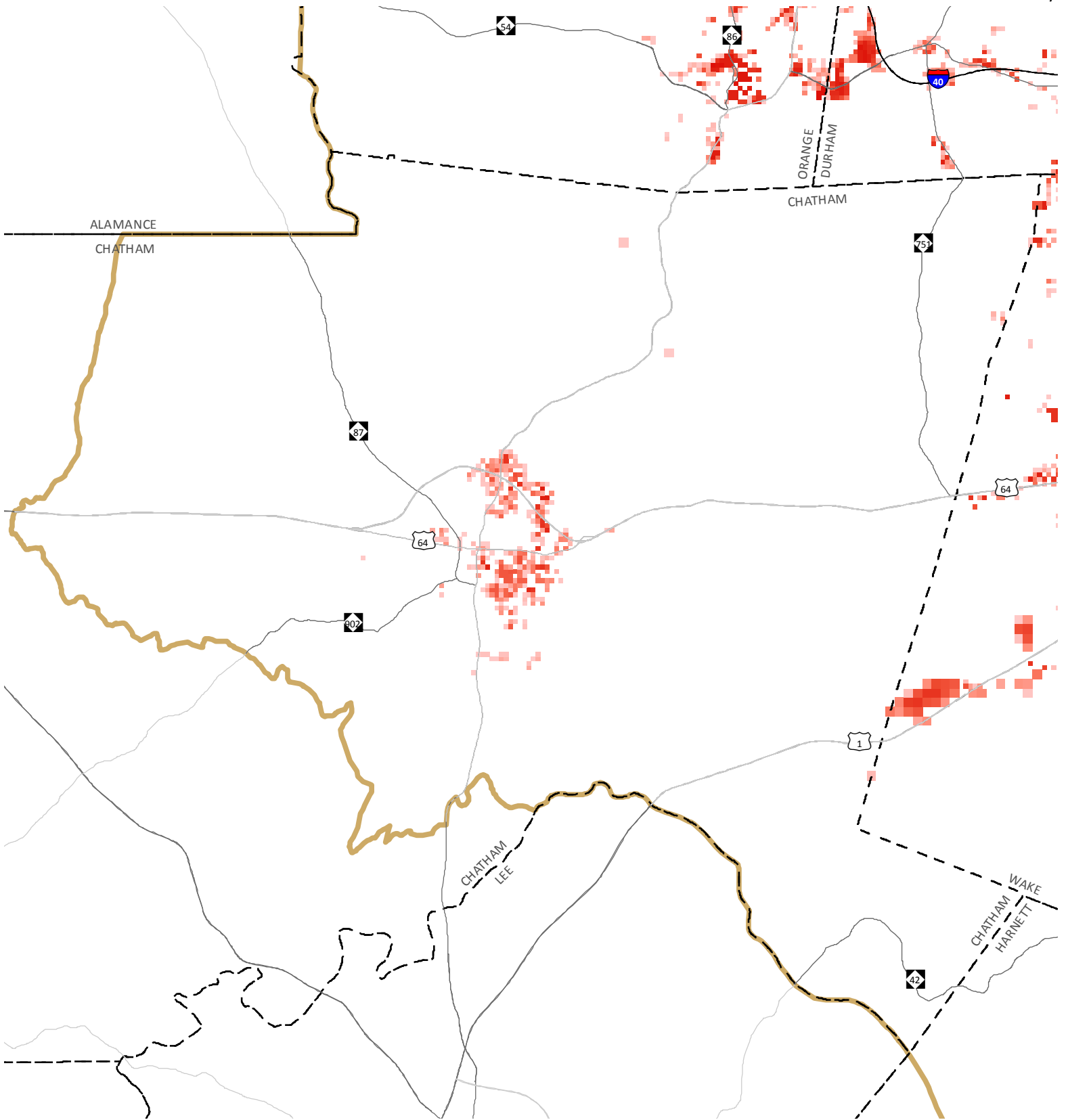
 Interstate  
 US Hwy  
 State Hwy





See table named "Connect 2045 - Preferred Scenario Output by Jurisdiction" for a summary of household and employment data allocated to individual cities, towns, and counties in the Triangle Region CommunityViz Model.




# Connect 2045 - Triangle Region Scenario Planning

Chatham County



Regional Composite Map - New Employment Distribution - 32-Year Forecast (2013-2045)

 Study Area Boundary (TRM V.6)  
 County Boundary

 Interstate  
 US Hwy  
 State Hwy



See table named "Connect 2045 - Preferred Scenario Output by Jurisdiction" for a summary of household and employment data allocated to individual cities, towns, and counties in the Triangle Region CommunityViz Model.