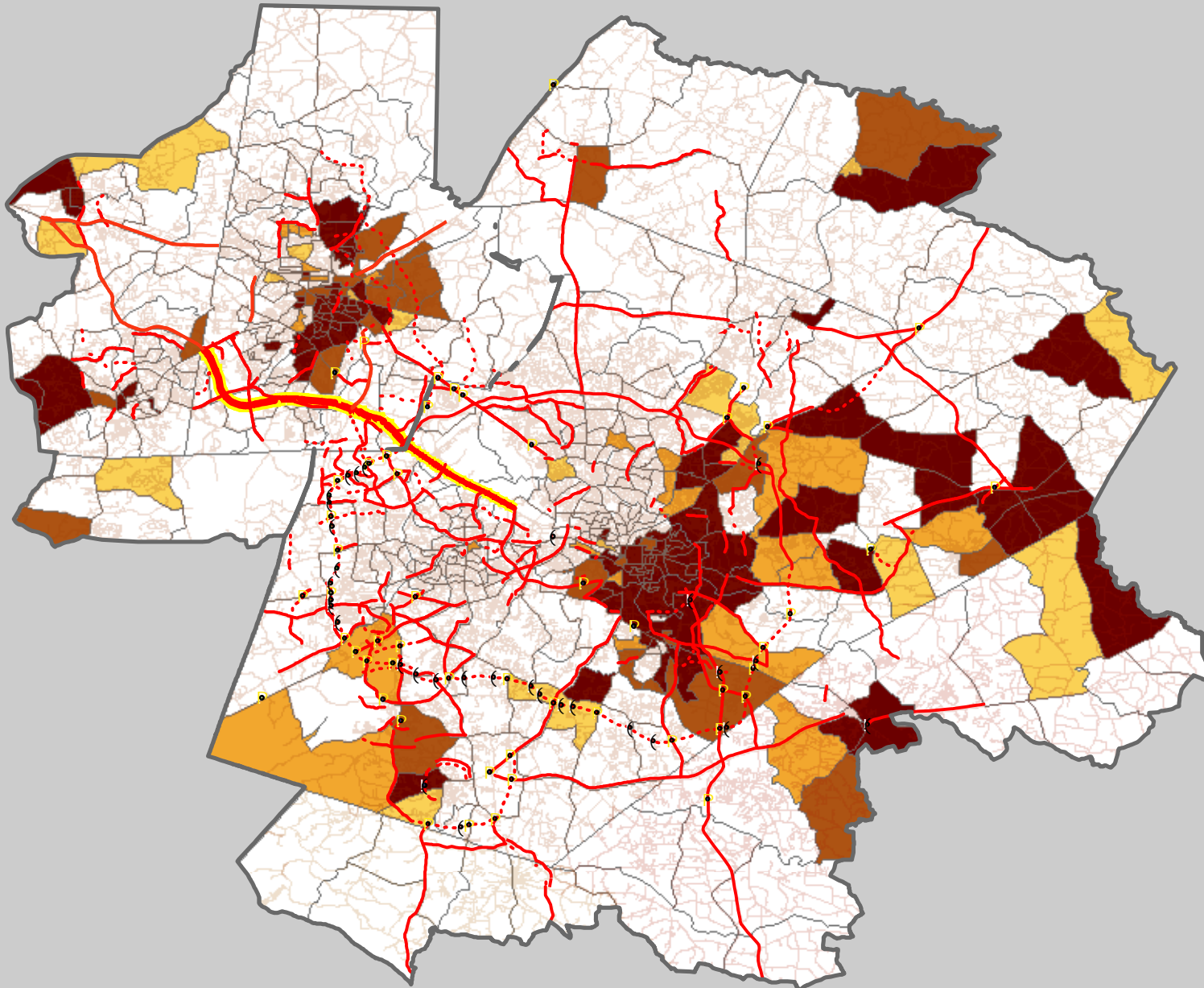


2035 Long Range Transportation Plan

Black or African American Population and 2035 Highway Projects



Roadway Improvements


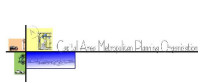
- Roadway Improvements
- - - New Roadway

Percent of Black or African American Population

- At or below county average
- Up to 10% above county average
- 10%-25% above county average
- 25%-50% above county average
- More than 50% above county average

This map was compiled using the best available data. However, the DCHC MPO is not responsible for errors, omissions, and/or misuse.

Map created on May 26, 2009

	 5.26.2009
