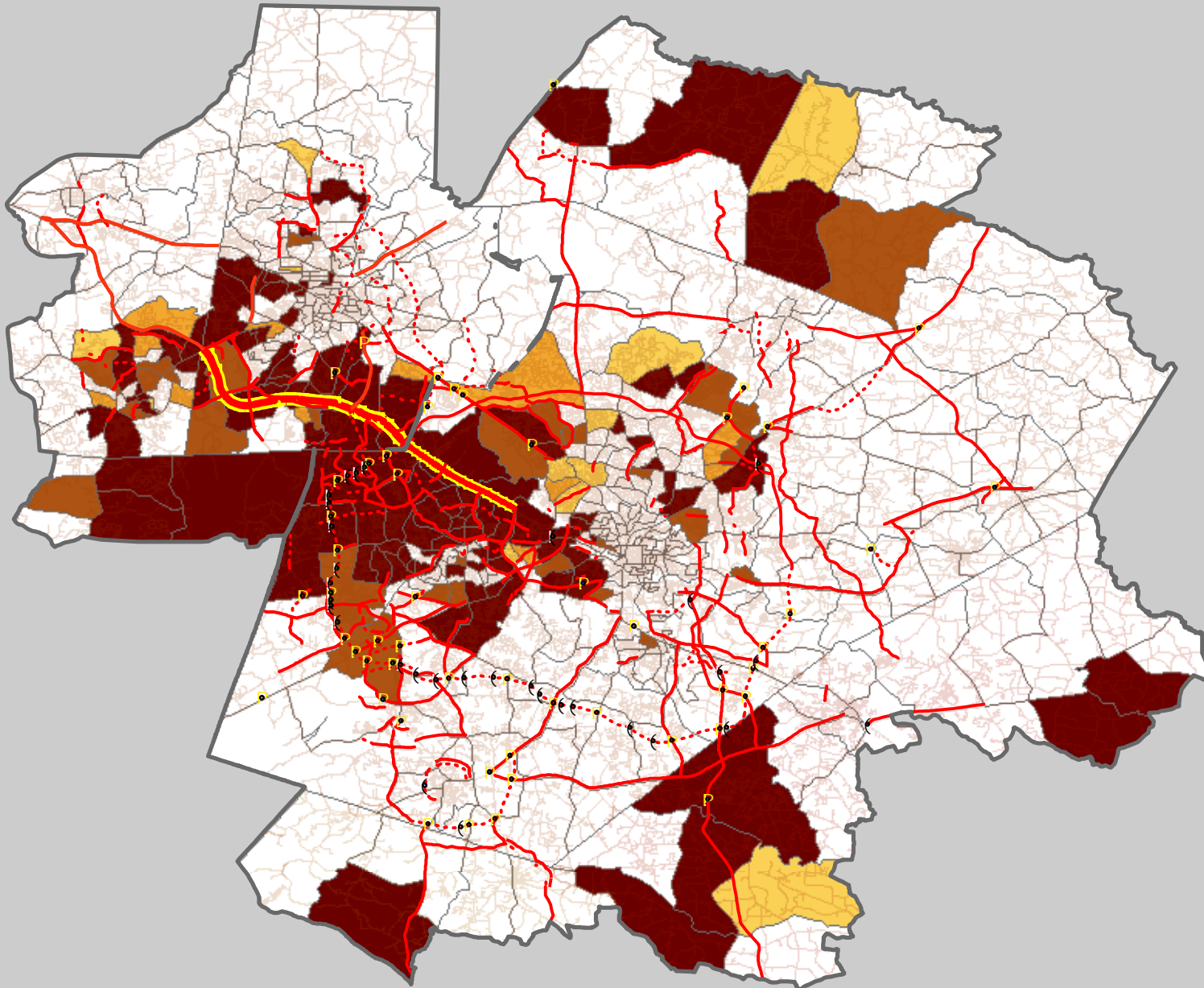


2035 Long Range Transportation Plan

Asian Population and 2035 Highway Projects



Roadway Improvements

— Roadway Improvements

- - - New Roadway

Percent of Asian Population

□ At or below county average

□ Up to 10% above county average




□ 10%-25% above county average

□ 25%-50% above county average

□ More than 50% above county average

This map was compiled using the best available data. However, the DCHC MPO is not responsible for errors, omissions, and/or misuse.

Map created on May 26, 2009

 <p>DCHC Durham-Chapel Hill-Carrboro METROPOLITAN Planning Organization</p>	 <p>Council of Metropolitan Planning Organizations</p>
5.26.2009	
<p>Miles</p>  <p>0 3 6 9 12</p>	