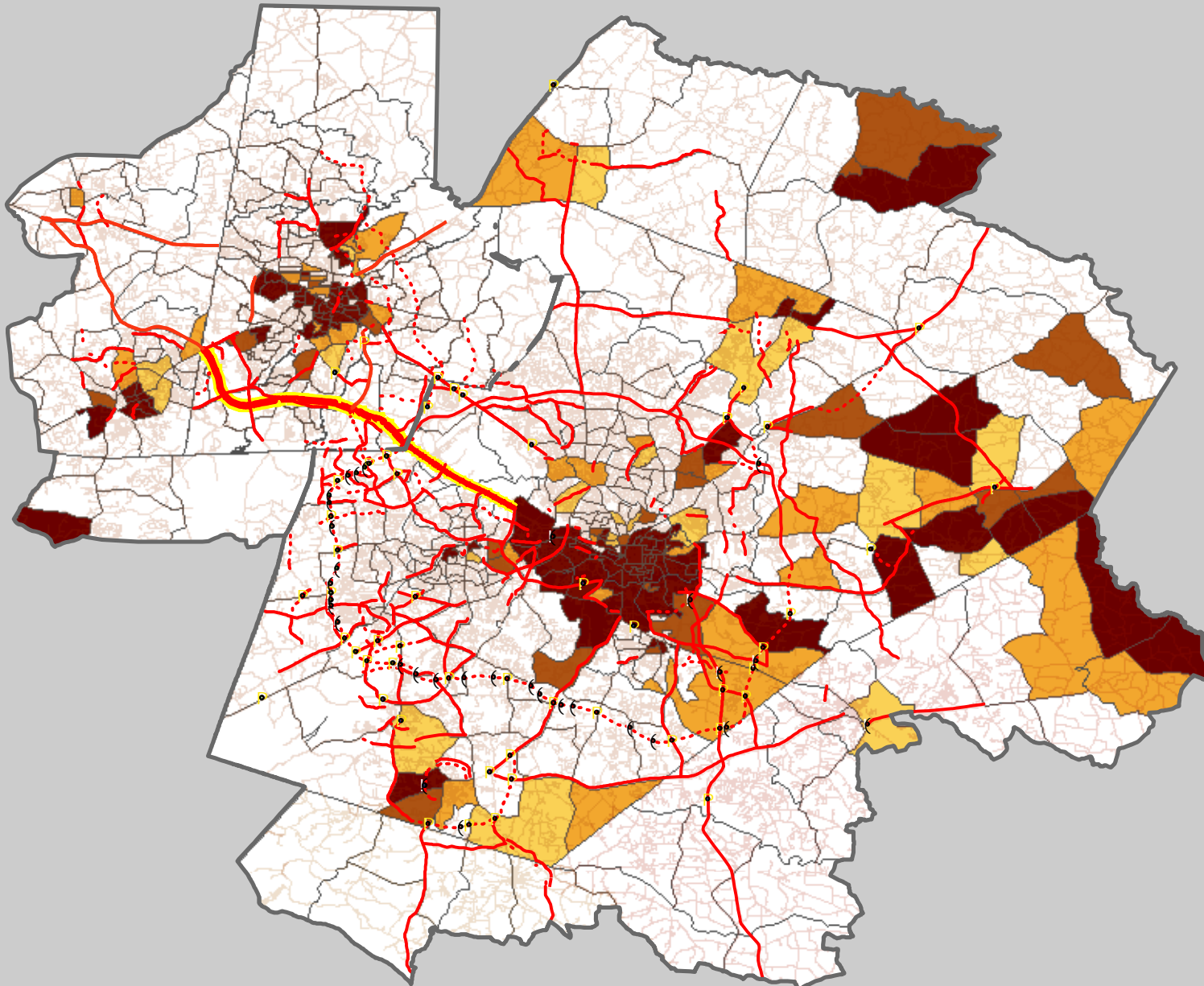


# 2035 Long Range Transportation Plan

## Low Income Population and 2035 Highway Projects



### Roadway Improvements

— Roadway Improvements

- - - New Roadway

### Percent of Households Below Poverty

□ At or below county average

□ Up to 10% above county average

□ 10% - 25% above county average

□ 25% - 50% above county average

□ More than 50% above county average

This map was compiled using the best available data. However, the DCHC MPO is not responsible for errors, omissions, and/or misuse.

Map created on April 17, 2009



4.17.2009

