

2040 MTP and CTP Alternatives Description -- Transit

Transit in Alternatives

A different set of transit service is assumed in each transportation network:

Highway Intensive

- Current bus transit
- No bus transit improvements from the county plans (e.g., based on ½ cent sales tax)
- No rail transit

Transit Intensive

- Current bus transit
- Bus transit improvements in county plans (based on ½ cent sales tax)
- Light rail between Durham and Wake counties (in place of regional rail from the Locally Preferred Alternative)
- Light rail and regional rail extensions in Orange County
- CRT addition between Cary and western RTP
- Five Bus Rapid Transit (BRT) projects in Chapel Hill

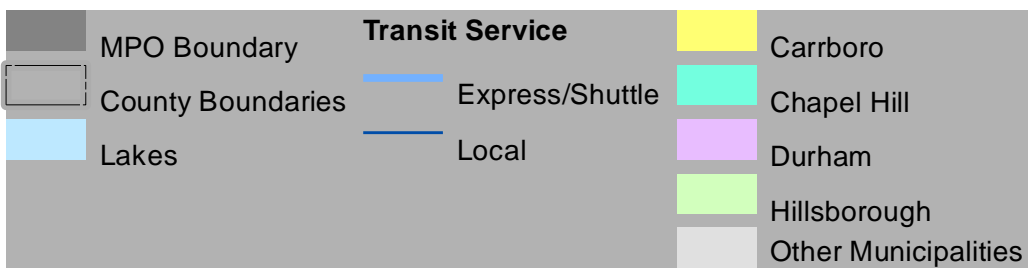
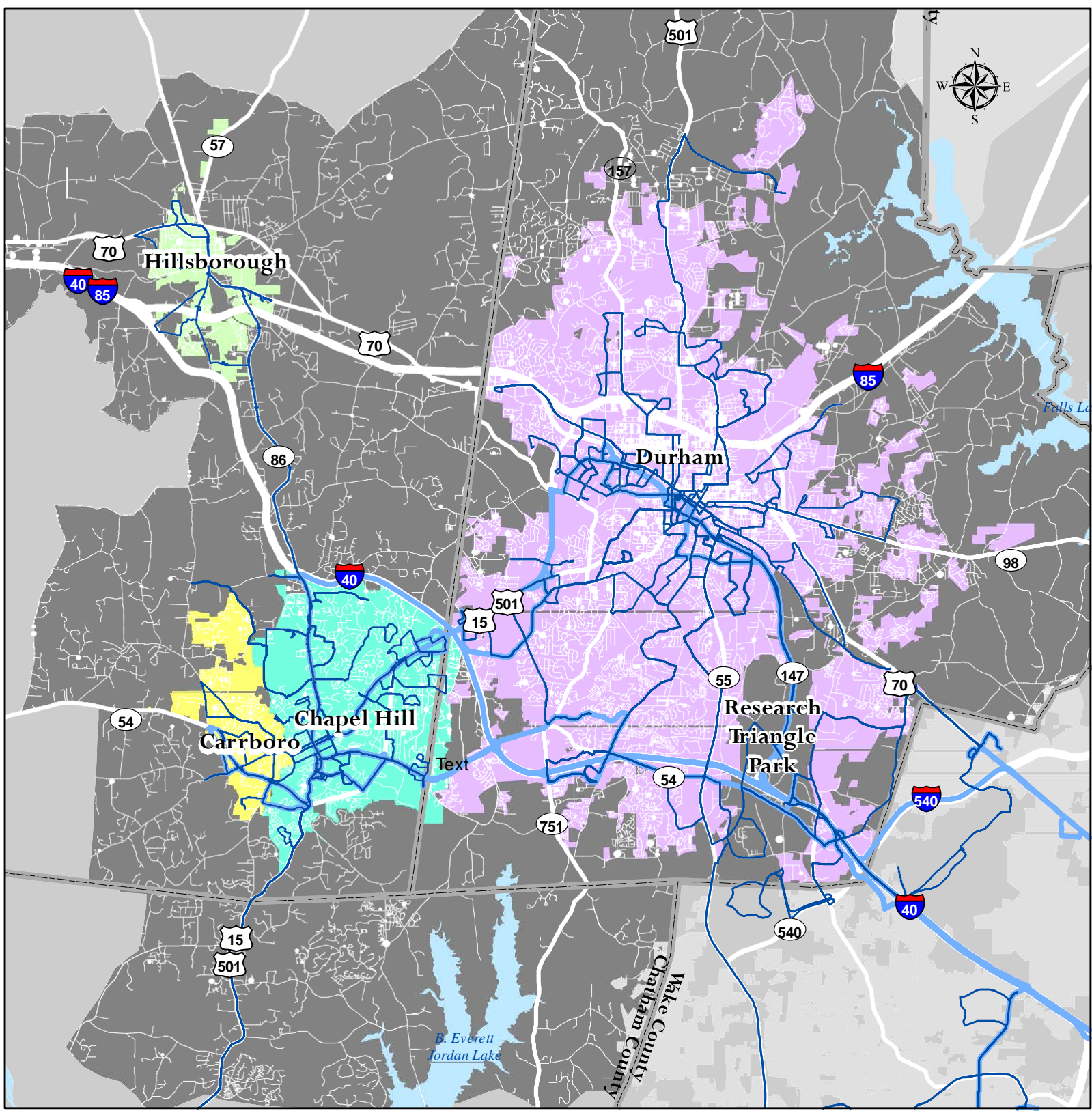
Moderate – This includes most of the highway projects in the current 2035 LRTP.

- Current bus transit
- Bus transit improvements in county plans (based on ½ cent sales tax)
- Light rail and regional rail (based on Locally Preferred Alternative)
- MLK Blvd Bus Rapid Transit (BRT) in Chapel Hill

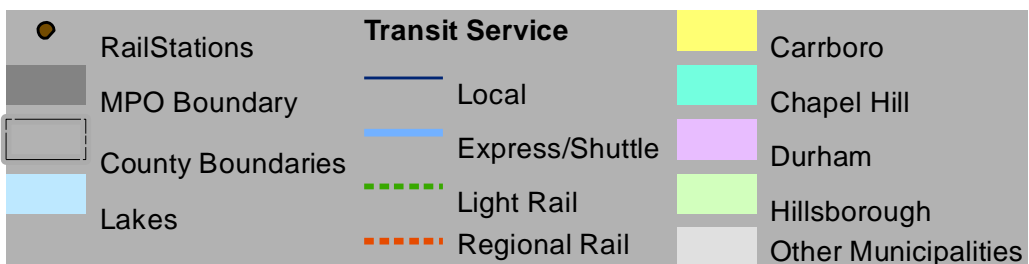
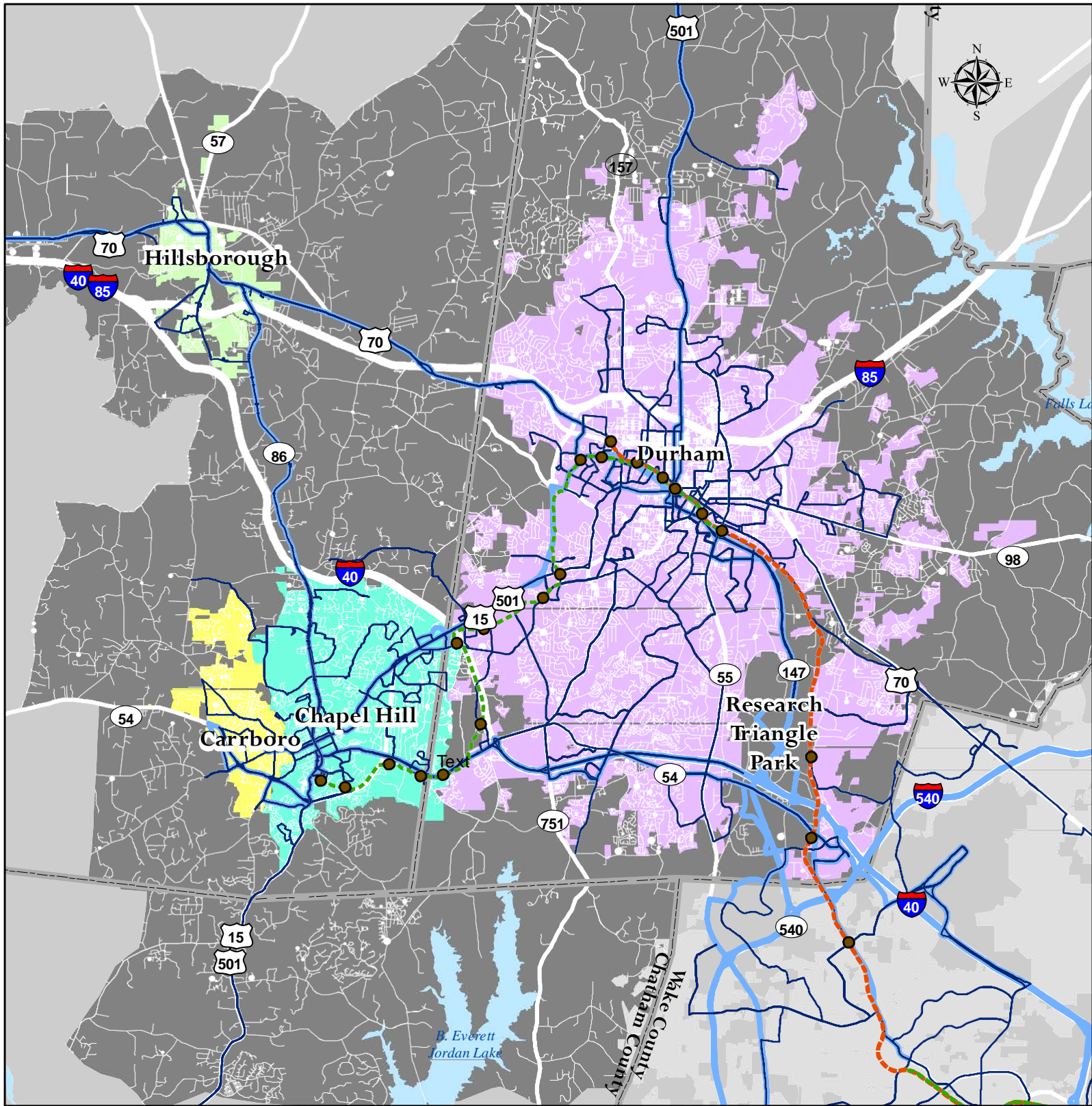
Presentation of Transit Service

This section presents a table of transit services and indicates in which Alternative the service is included. A series of maps shows the service coverage areas.

Durham Chapel Hill Carrboro Metropolitan Planning Organization Transit Service in Highway Intensive Network



Durham Chapel Hill Carrboro Metropolitan Planning Organization Transit Service in Moderate Network



Durham Chapel Hill Carrboro Metropolitan Planning Organization Transit Service in Transit Intensive Network

