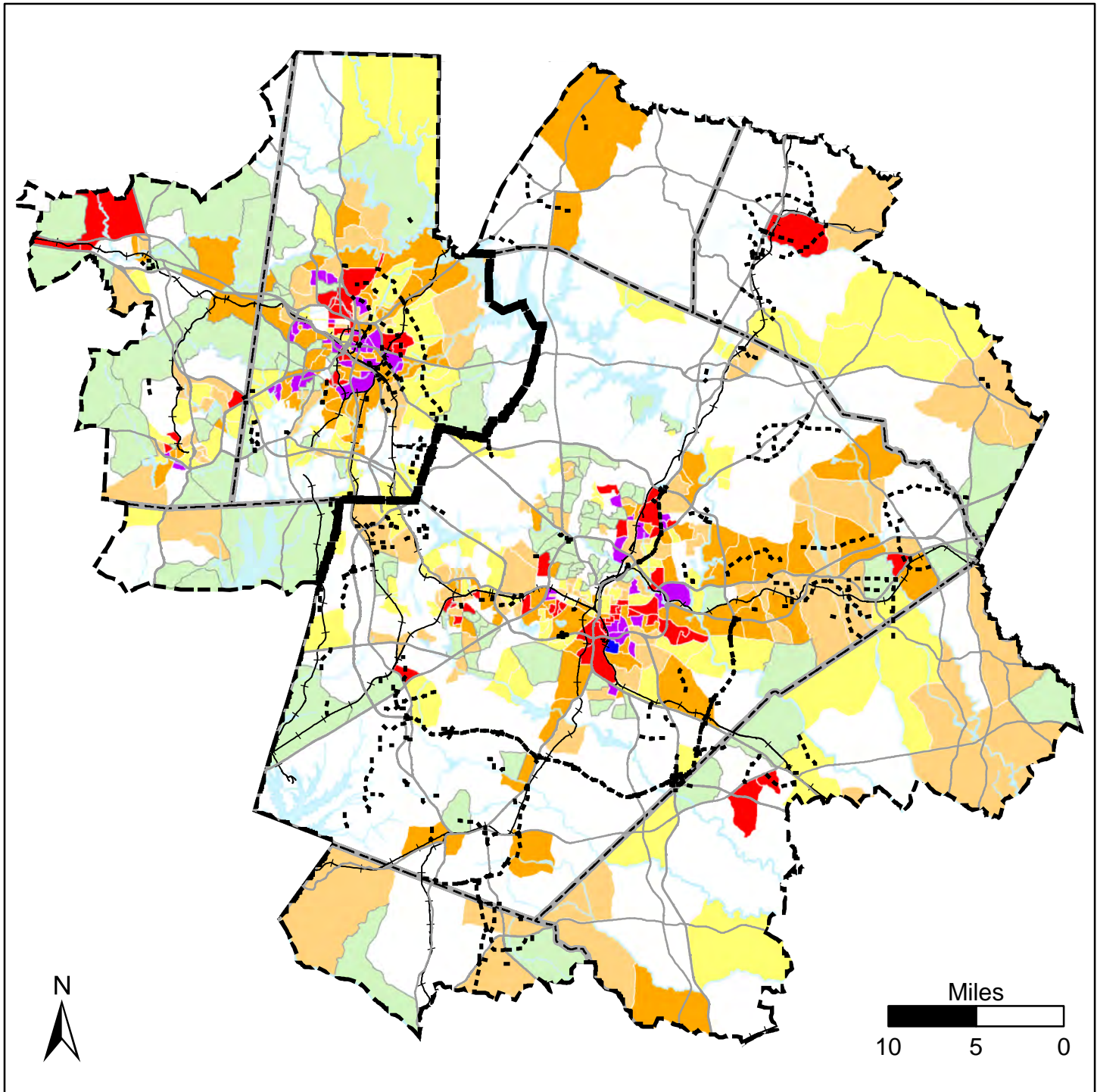


## Appendix 12. Environmental Justice Maps and Critical Environmental Resource Maps

This appendix contains maps illustrating the results of analyzing environmental justice criteria and inventorying critical environmental resources.



### Communities of Concern (Block Group)

#### Number of Triggers Present

Color	Number of Triggers	Total	CofC	Percent in CofC
Light Green	1, AGE			
Yellow	1, NOT AGE			
Light Orange	2	215	144	55%
Orange	3			
Red	4			
Purple	5			
Blue	6			

(Investment in millions)

Investment Type	Total	CofC	Percent in CofC
New Loc Miles	215	144	55%
New Loc Invest	\$3012	\$1665	55%

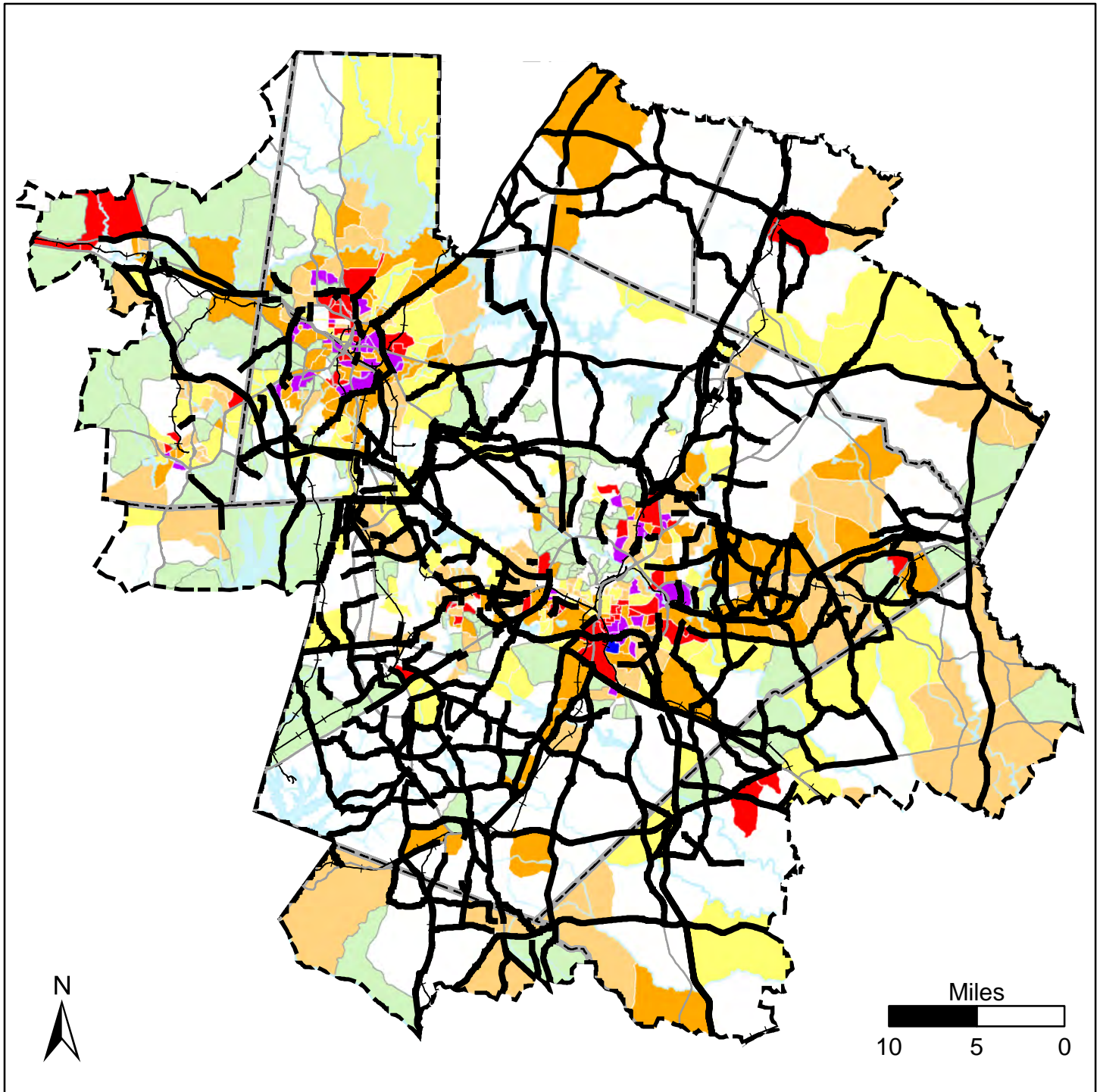
### CTP Highway Projects

- Modernization/Superstreet
- Widening
- - - - New Location
- == Expressway; Freeway

- ▭ MPO Boundaries
- Major Roads
- ++ Railroads
- ▭ Counties
- Major Water Bodies

Map prepared by Capital Area MPO GIS staff  
 on January 10, 2018.

Information depicted herein is for reference purposes only and is compiled from the best available sources.  
 The Capital Area MPO assumes no responsibility for errors arising from the misuse of this map.



### Communities of Concern (Block Group)

#### Number of Triggers Present

1, AGE

1, NOT AGE

2

3

4

5

6

	Total	CofC	Percent in CofC
Widen Miles	886	522	59%
Widen Invest	\$11292	\$6536	58%

(Investment in millions)

### CTP Highway Projects

— Modernization/Superstreet

— Widening

----- New Location

== Expressway; Freeway

--- MPO Boundaries

— Major Roads

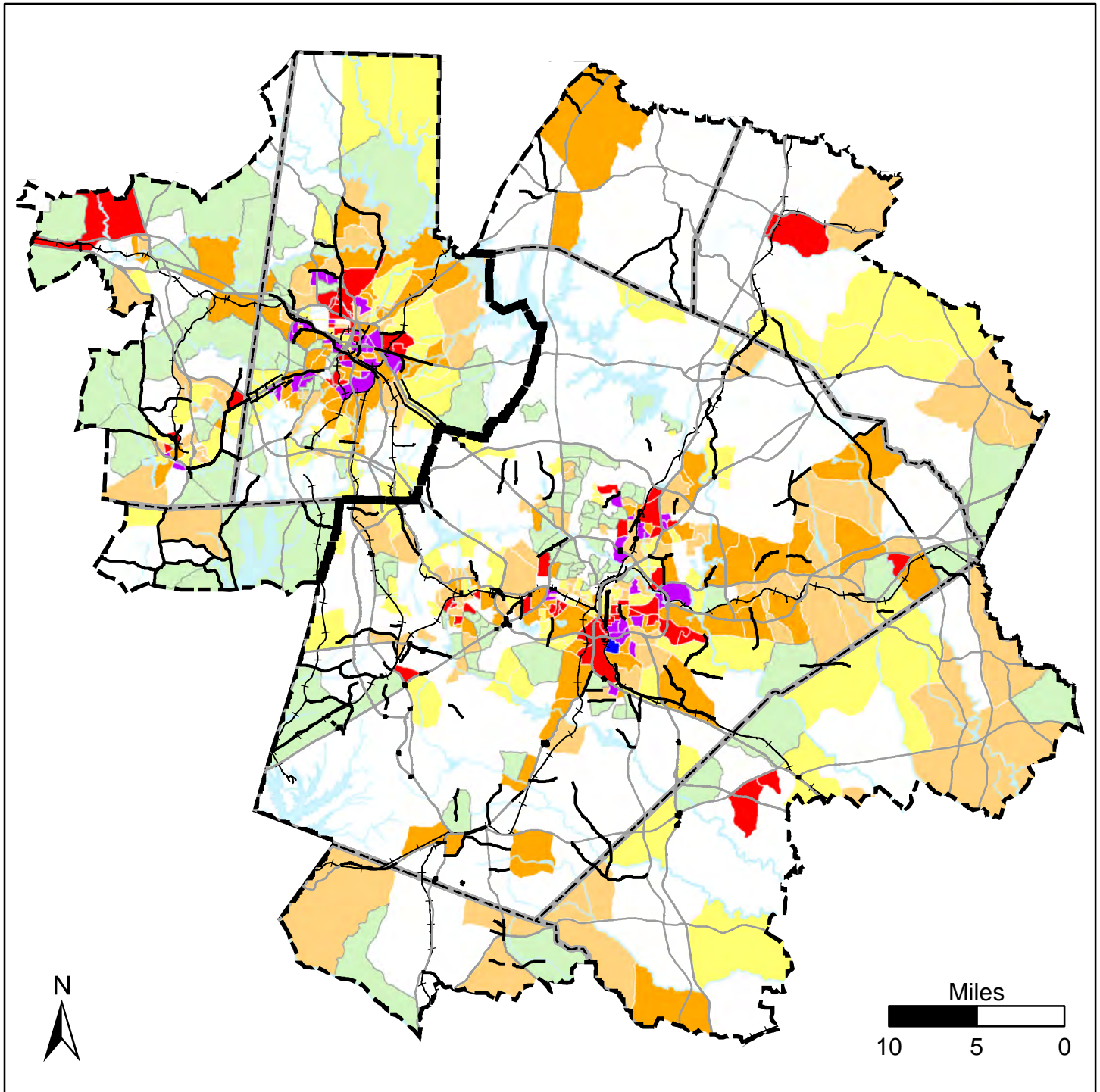
++ Railroads

--- Counties

Major Water Bodies

Map prepared by Capital Area MPO GIS staff  
 on January 10, 2018.

Information depicted hereon is for reference purposes only and is compiled from the best available sources.  
 The Capital Area MPO assumes no responsibility for errors arising from the misuse of this map.



### Communities of Concern (Block Group)

#### Number of Triggers Present

1, AGE

1, NOT AGE

2

3

4

5

6

	Total	CofC	Percent in CofC
Other Hwy Miles	280	200	71%
Other Hwy Invest	\$2892	\$2087	72%

(Investment in millions)

### CTP Highway Projects

— Modernization/Superstreet

— Widening

----- New Location

== Expressway; Freeway

--- MPO Boundaries

— Major Roads

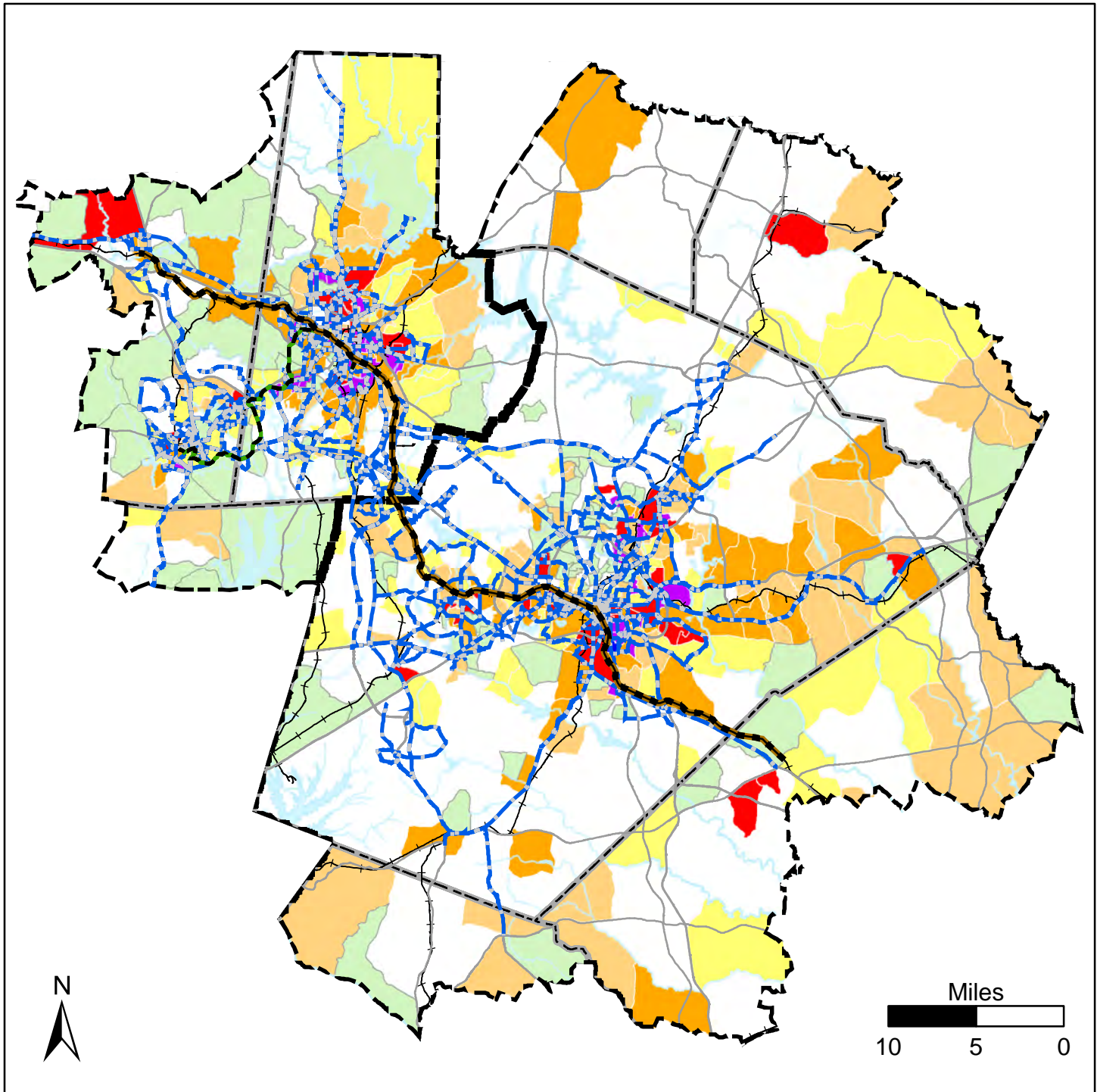
++ Railroads

□ Counties

■ Major Water Bodies

Map prepared by Capital Area MPO GIS staff  
 on January 10, 2018.

Information depicted herein is for reference purposes only and is compiled from the best available sources.  
 The Capital Area MPO assumes no responsibility for errors arising from the misuse of this map.



### Communities of Concern (Block Group) Number of Triggers Present

Number of Triggers Present	Transit Miles	Total	CofC	Percent in CofC
1, AGE				
1, NOT AGE				
2	1693	1693	1431	85%
3				
4				
5				
6				

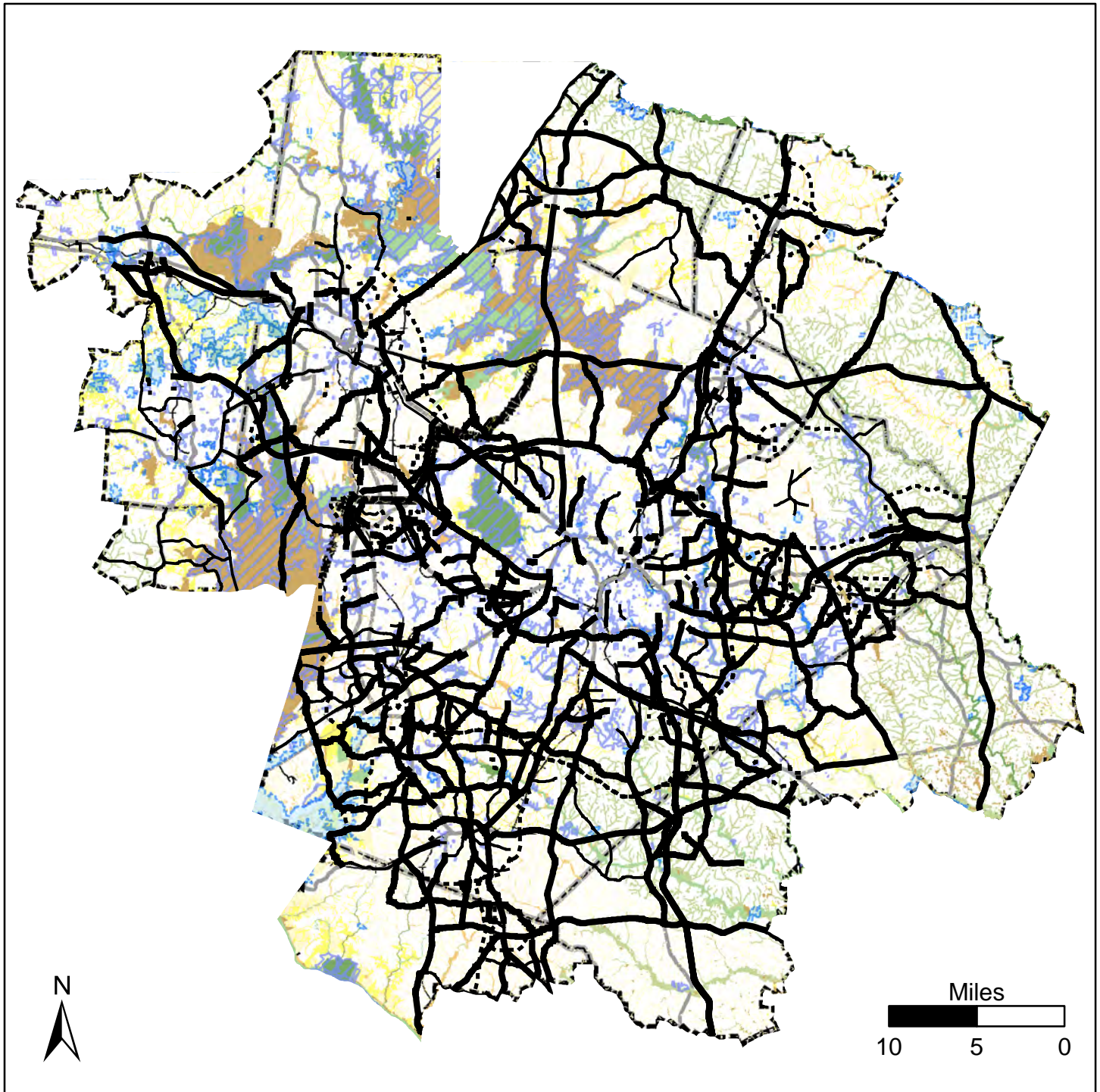
### CTP Transit Projects Transit Mode/Project ID

- — — Bus; BRT; Clayton-Garner
- — — T50
- — — LRT

- MPO Boundaries
- Major Roads
- Railroads
- Counties
- Major Water Bodies

Map prepared by Capital Area MPO GIS staff  
 on January 10, 2018.

Information depicted hereon is for reference purposes only and is compiled from the best available sources.  
 The Capital Area MPO assumes no responsibility for errors arising from the misuse of this map.



**Relative Conservation Value**

- 9-10 (Maximum)
- 8
- 7
- 6
- 5
- 2-4
- 1 (Moderate)

**Conservation Tax Credit Properties**

- Managed Areas
- CTP Highway Projects

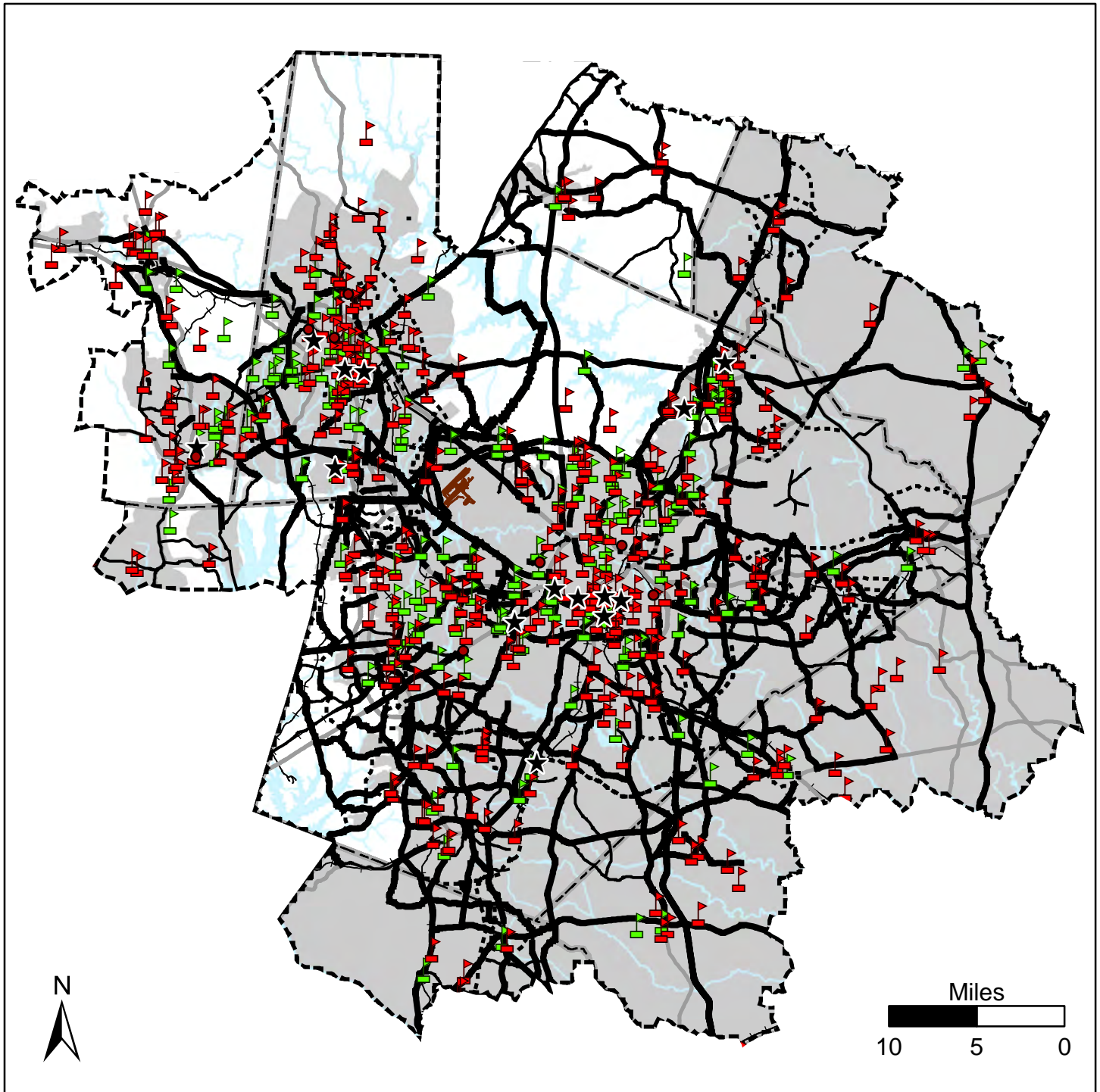
- Modernization/Superstreet
- Widening
- New Location
- Expressway; Freeway

**MPO Boundaries**

- Major Roads
- Railroads
- Counties

Map prepared by Capital Area MPO GIS staff on January 10, 2018.  
 Information depicted hereon is for reference purposes only and is compiled from the best available sources. The Capital Area MPO assumes no responsibility for errors arising from the misuse of this map.

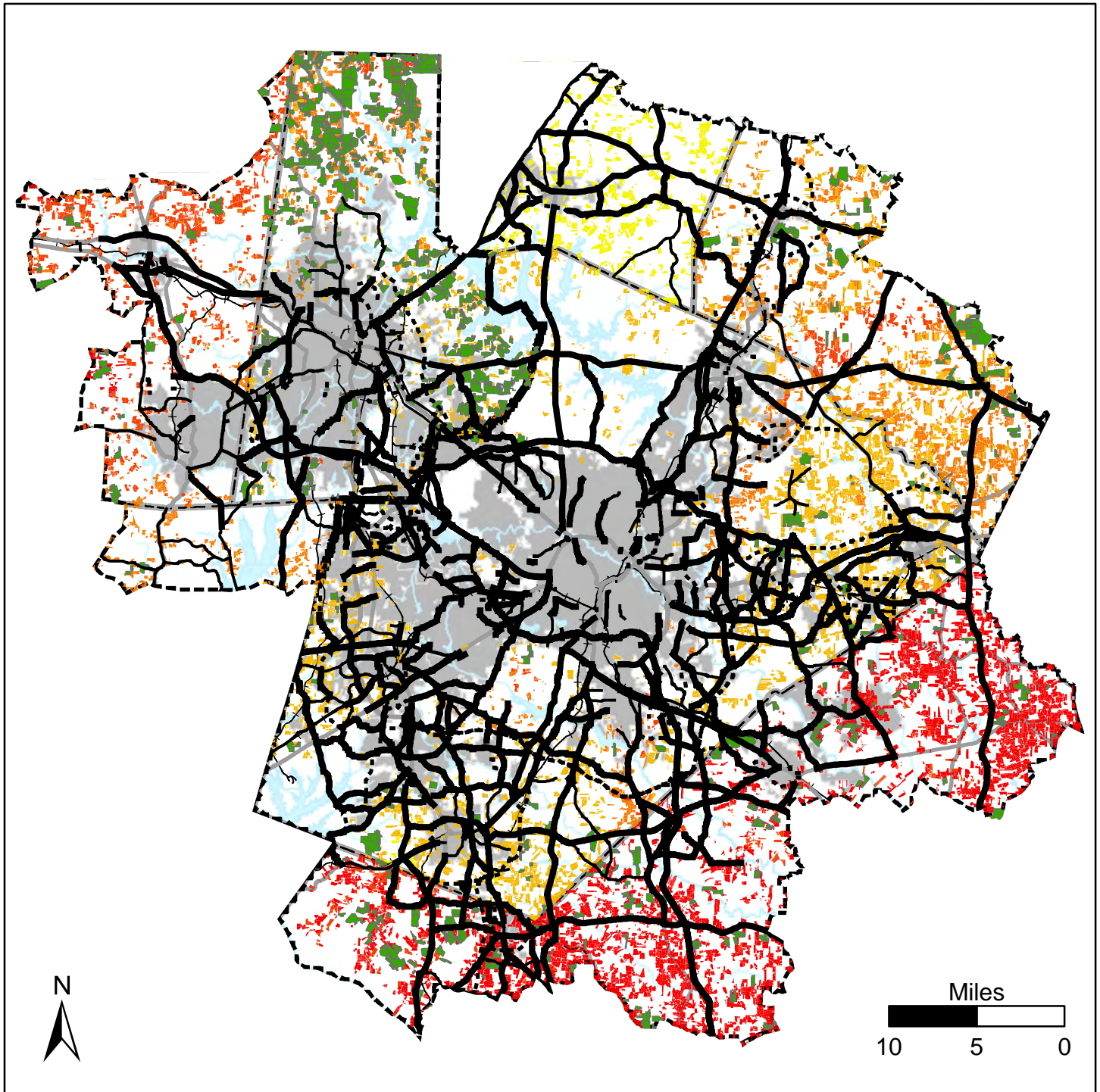
# Development 2045 MTP and CTP



- |                         |                             |                                      |
|-------------------------|-----------------------------|--------------------------------------|
| ● Hospital              | <b>CTP Highway Projects</b> | ⬜ MPO Boundaries                     |
| ★ College or University | — Modernization/Superstreet | — Major Roads                        |
| 🚦 Public School         | — Widening                  | — Railroads                          |
| 🏫 Non-Public School     | ⋯ New Location              | ⬜ Counties                           |
|                         | == Expressway; Freeway      | 🌊 Major Water Bodies                 |
|                         |                             | 🏠 Water and Sewer Service Boundaries |

Map prepared by Capital Area MPO GIS staff  
 on January 10, 2018.

Information depicted hereon is for reference purposes only and is compiled from the best available sources.  
 The Capital Area MPO assumes no responsibility for errors arising from the misuse of this map.



**Farm Viability**

- 2 - 66 Low Viability
- 67 - 95 Medium Low Viability
- 96 - 118 Medium Viability
- 119 - 141 Medium High Viability
- 142 - 204 High Viability
- Voluntary Agricultural District

**CTP Highway Projects**

- Modernization/Superstreet
- Widening
- New Location
- Expressway; Freeway



MPO Boundaries

Major Roads

Railroads

Counties

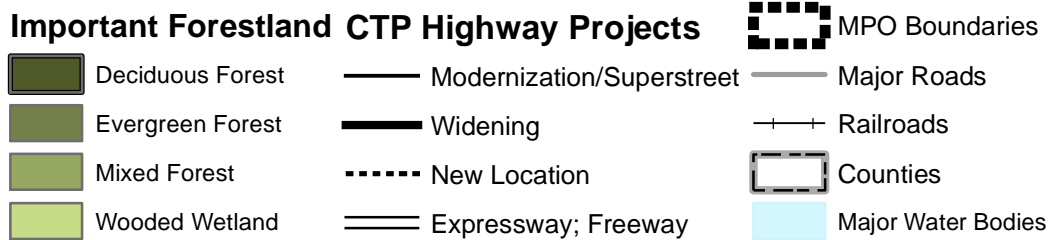
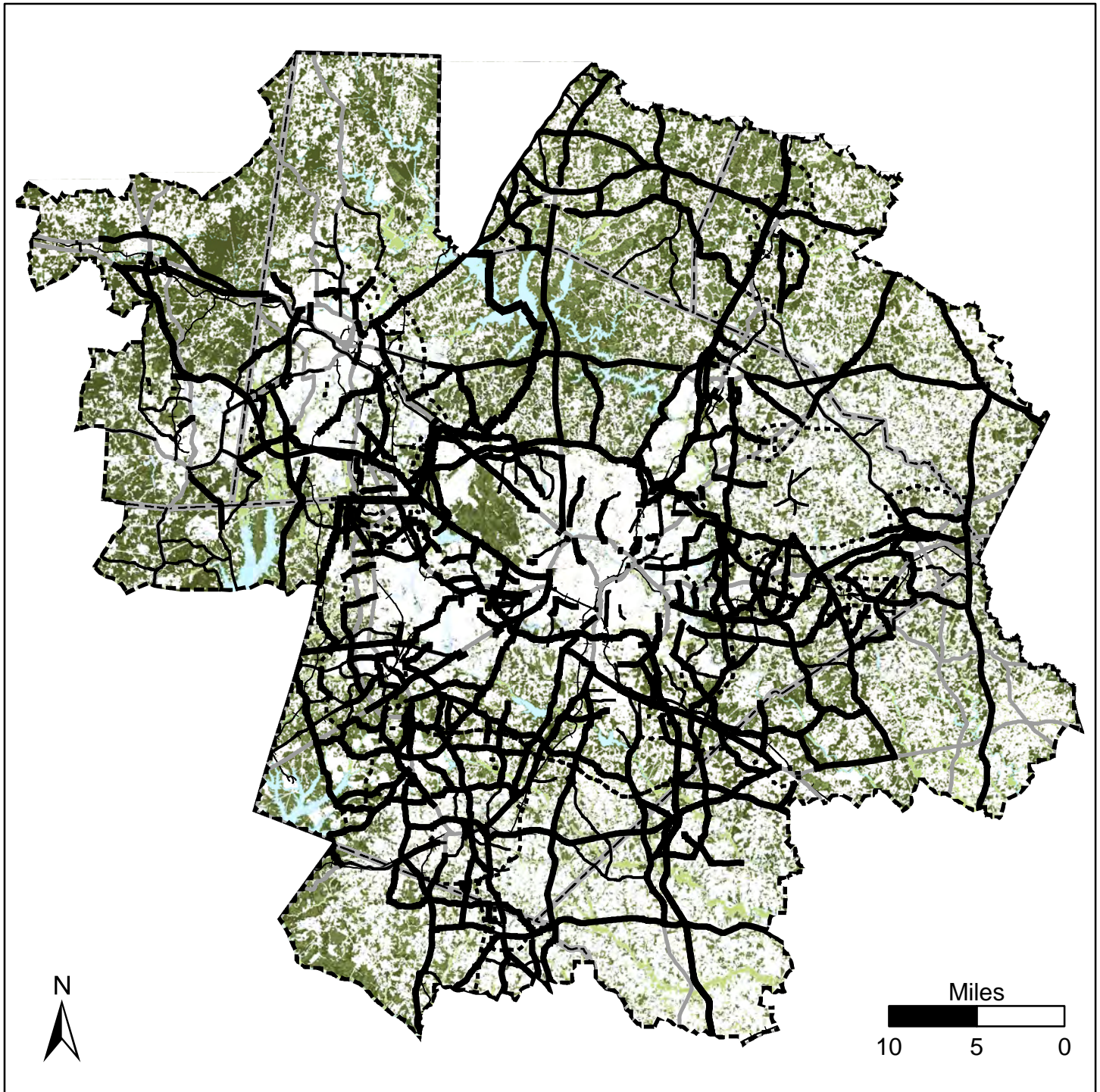
Major Water Bodies

Map prepared by Capital Area MPO GIS staff  
 on January 10, 2018.

Information depicted hereon is for reference purposes only and is compiled from the best available sources.  
 The Capital Area MPO assumes no responsibility for errors arising from the misuse of this map.

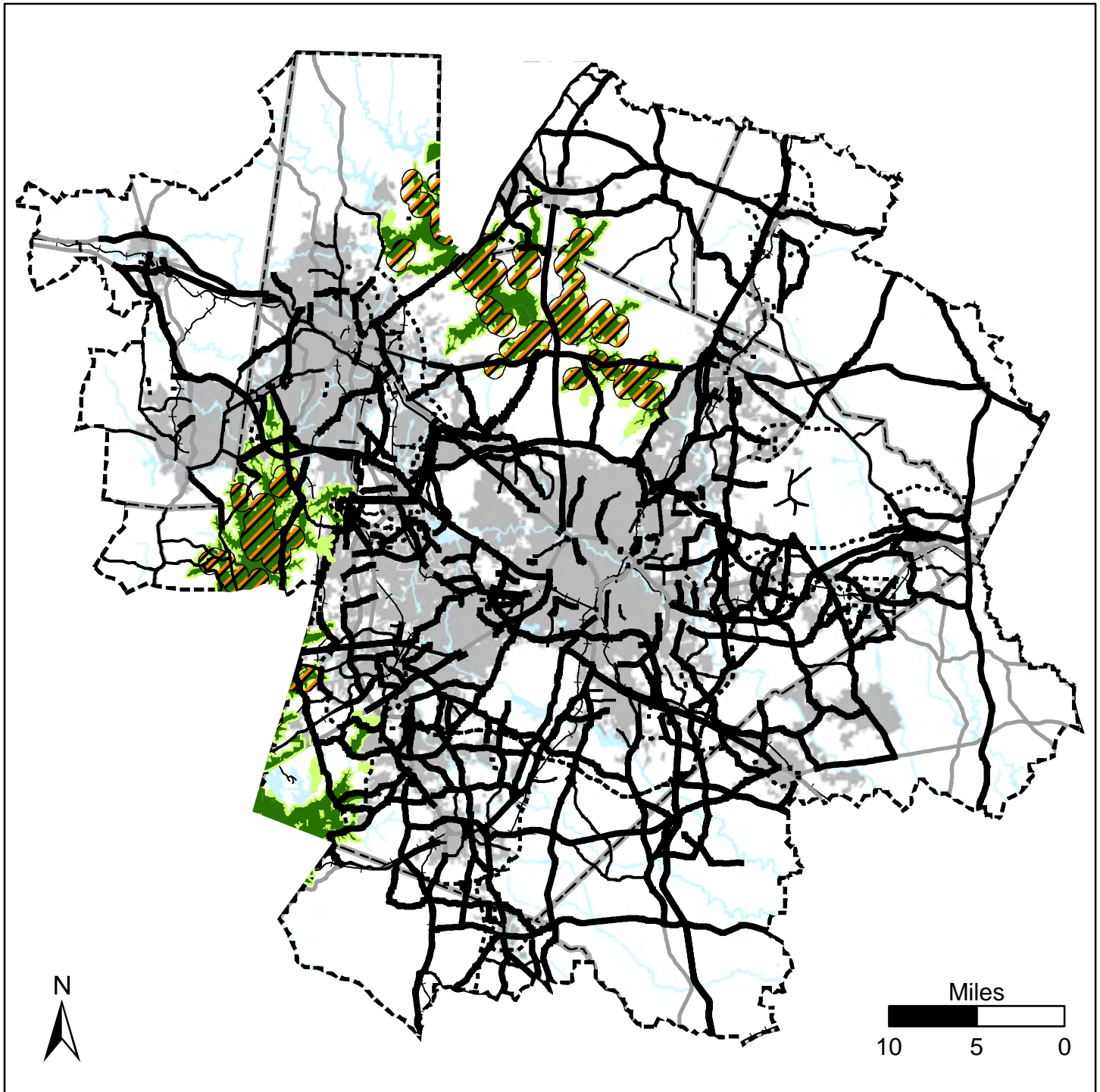







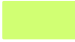

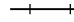



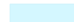

# Forest 2045 MTP and CTP



Map prepared by Capital Area MPO GIS staff  
 on January 10, 2018.

Information depicted hereon is for reference purposes only and is compiled from the best available sources.  
 The Capital Area MPO assumes no responsibility for errors arising from the misuse of this map.

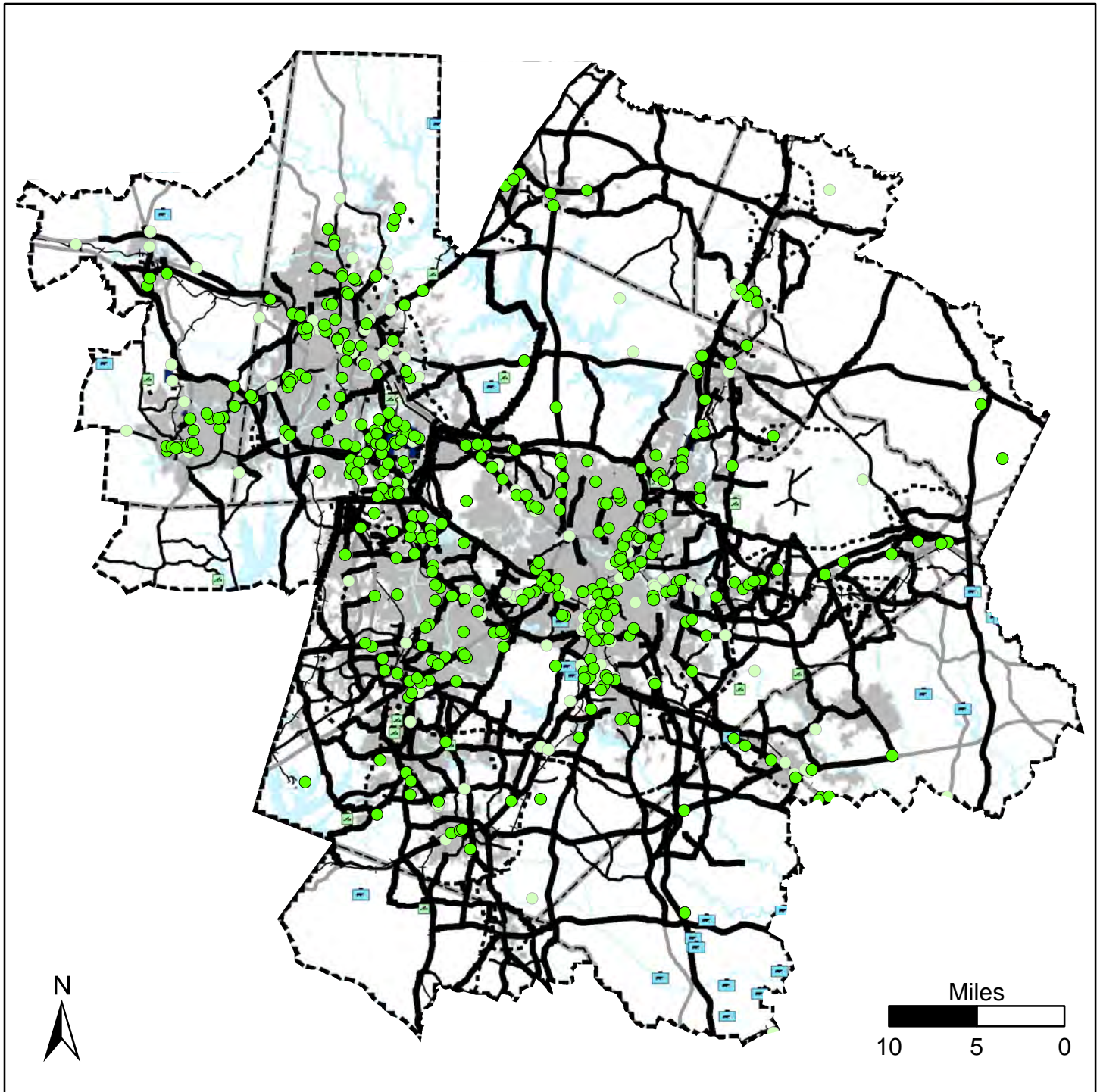


- |   |                       |   |   |   |                      |
|---|-----------------------|---|---|---|----------------------|
|  | Smoke Awareness Area  | <b>CTP Highway Projects</b>   |  | MPO Boundaries  |                      |
|  | Gameland              |  | Modernization/Superstreet   |  | Major Roads          |
|  | Hunting Safety Buffer |  | Widening  |  | Railroads            |
|   |                       |  | New Location  |  | Counties             |
|   |                       |  | Expressway; Freeway   |  | Major Water Bodies   |
|   |                       |   |   |  | Municipal Boundaries |

Map prepared by Capital Area MPO GIS staff  
on January 10, 2018.

Information depicted hereon is for reference purposes only and is compiled from the best available sources.  
The Capital Area MPO assumes no responsibility for errors arising from the misuse of this map.

# Hazards 2045 MTP and CTP



- Hazardous Waste - Active
- Hazardous Waste - Unverified
- Hazardous Waste - Inactive
- Animal Operation Facility
- Active Permitted Landfill
- Hazardous Substance Disposal Site

### CTP Highway Projects

- Modernization/Superstreet
- Widening
- New Location
- == Expressway; Freeway



MPO Boundaries

— Major Roads

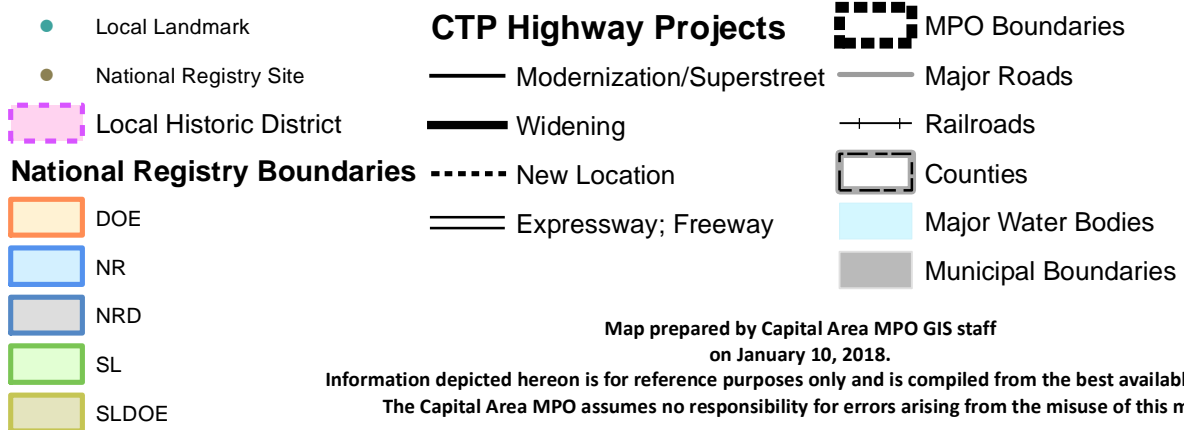
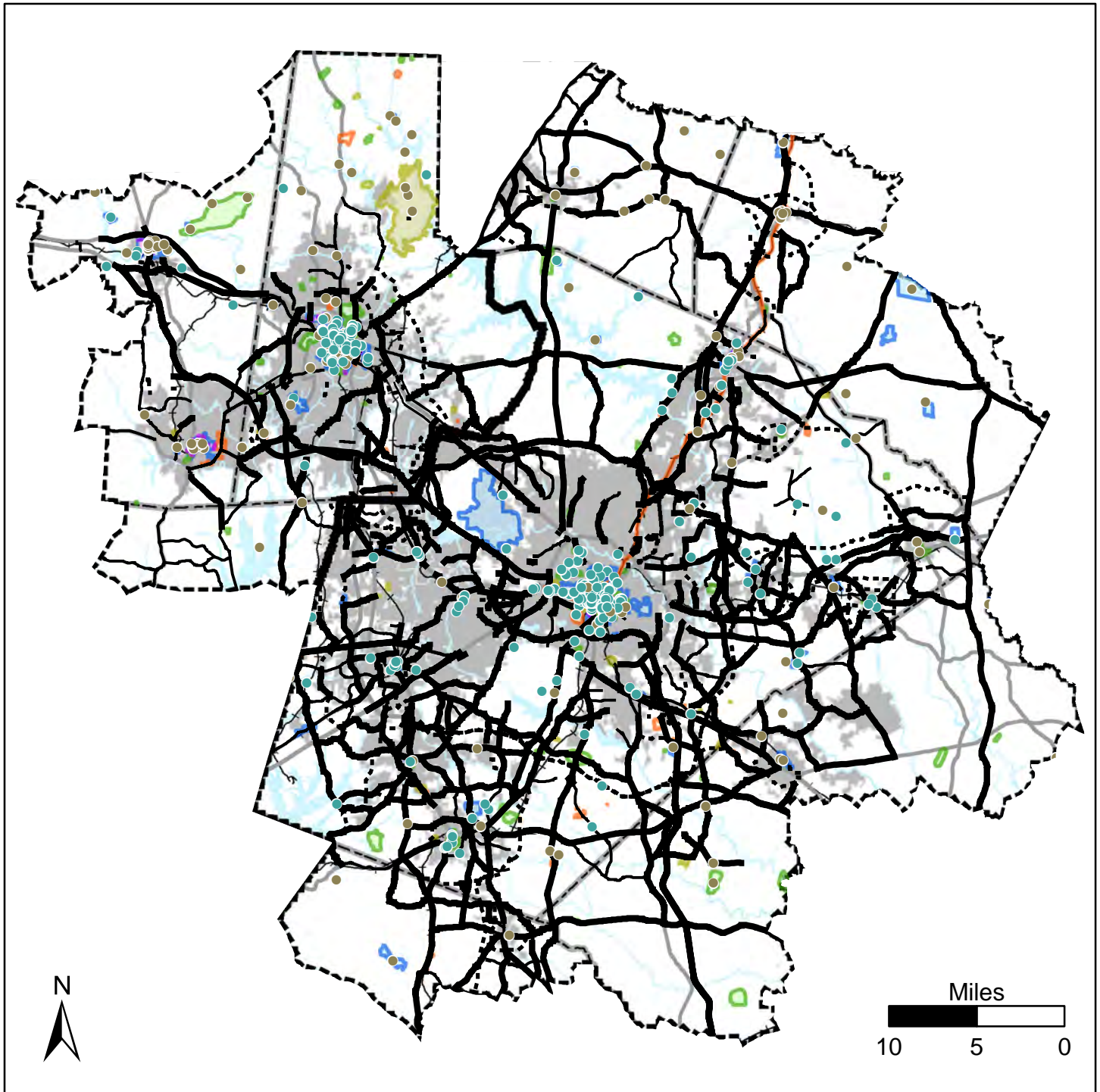
+ Railroads

▭ Counties

■ Major Water Bodies

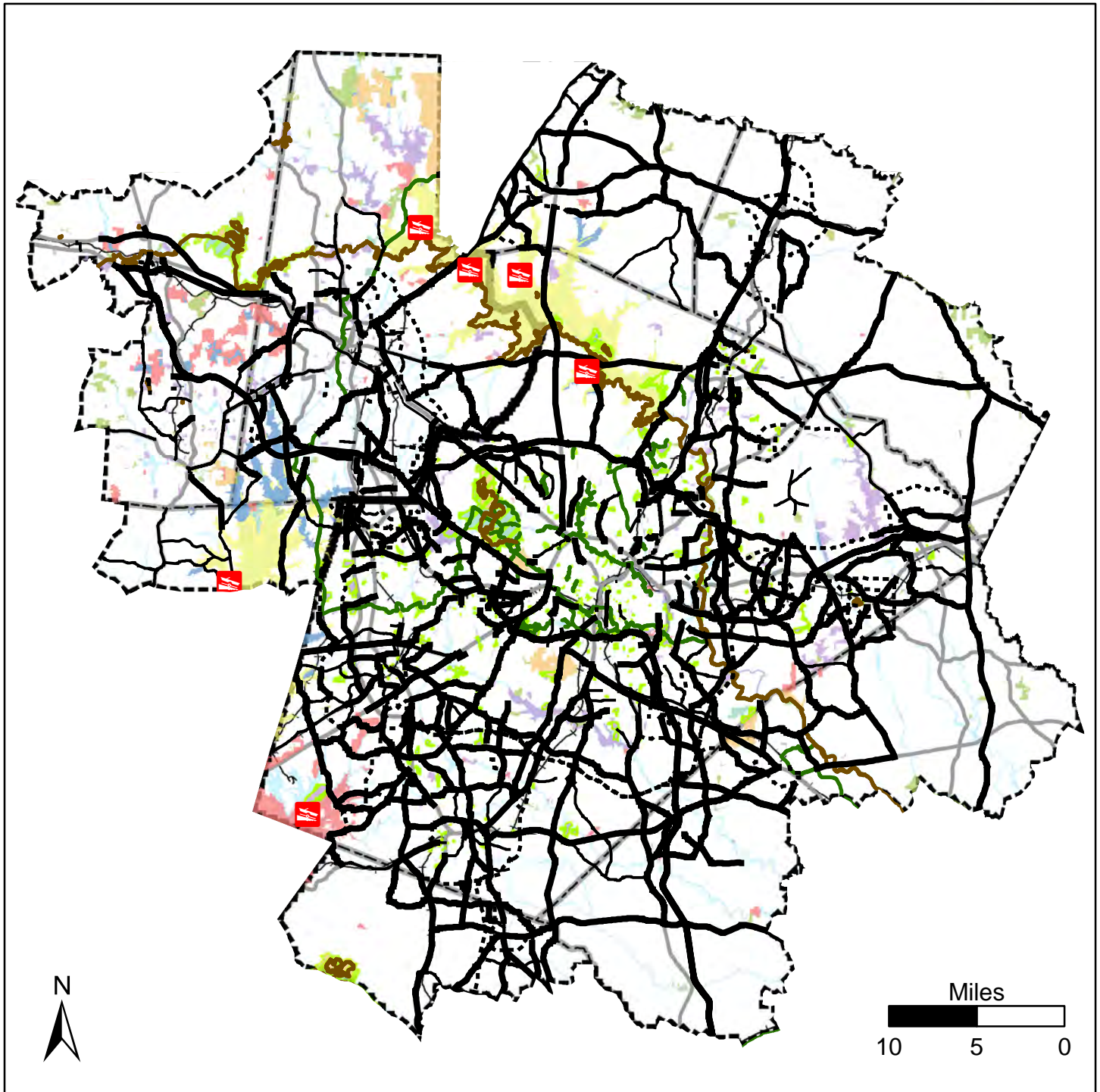
Map prepared by Capital Area MPO GIS staff  
 on January 10, 2018.

Information depicted hereon is for reference purposes only and is compiled from the best available sources.  
 The Capital Area MPO assumes no responsibility for errors arising from the misuse of this map.



Map prepared by Capital Area MPO GIS staff  
 on January 10, 2018.

Information depicted hereon is for reference purposes only and is compiled from the best available sources.  
 The Capital Area MPO assumes no responsibility for errors arising from the misuse of this map.



### Managed Areas

- Dedicated Nature Preserve
- Easement
- Federal
- Local Government
- Private
- Registered Heritage Area
- State

Boat Access

Trail

Greenway

Managed\_Areas\_Parks

### CTP Highway Projects

Modernization/Superstreet

Widening

New Location

Expressway; Freeway

MPO Boundaries

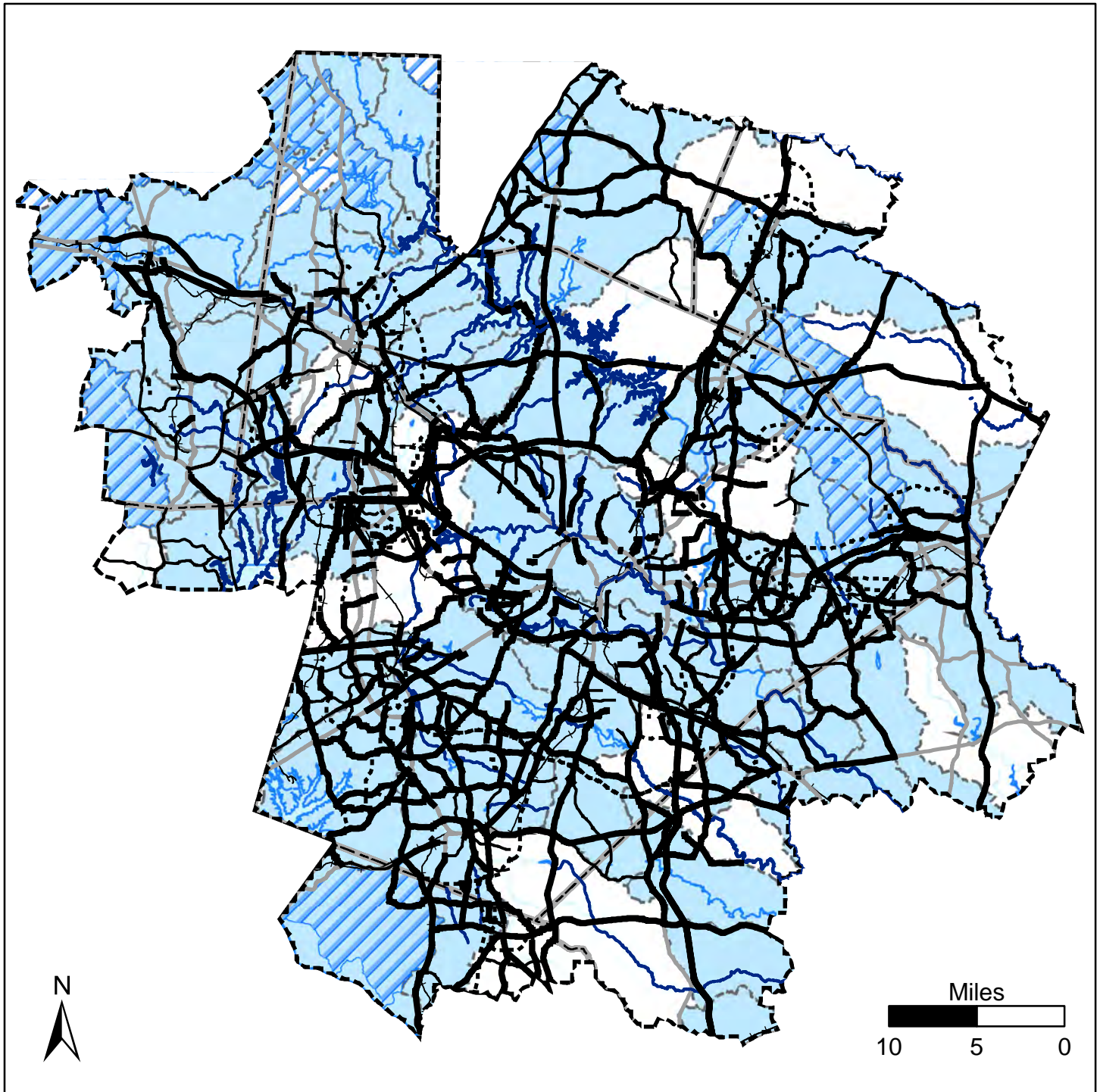
Major Roads

Railroads

Counties

Map prepared by Capital Area MPO GIS staff  
 on January 10, 2018.

Information depicted hereon is for reference purposes only and is compiled from the best available sources.  
 The Capital Area MPO assumes no responsibility for errors arising from the misuse of this map.

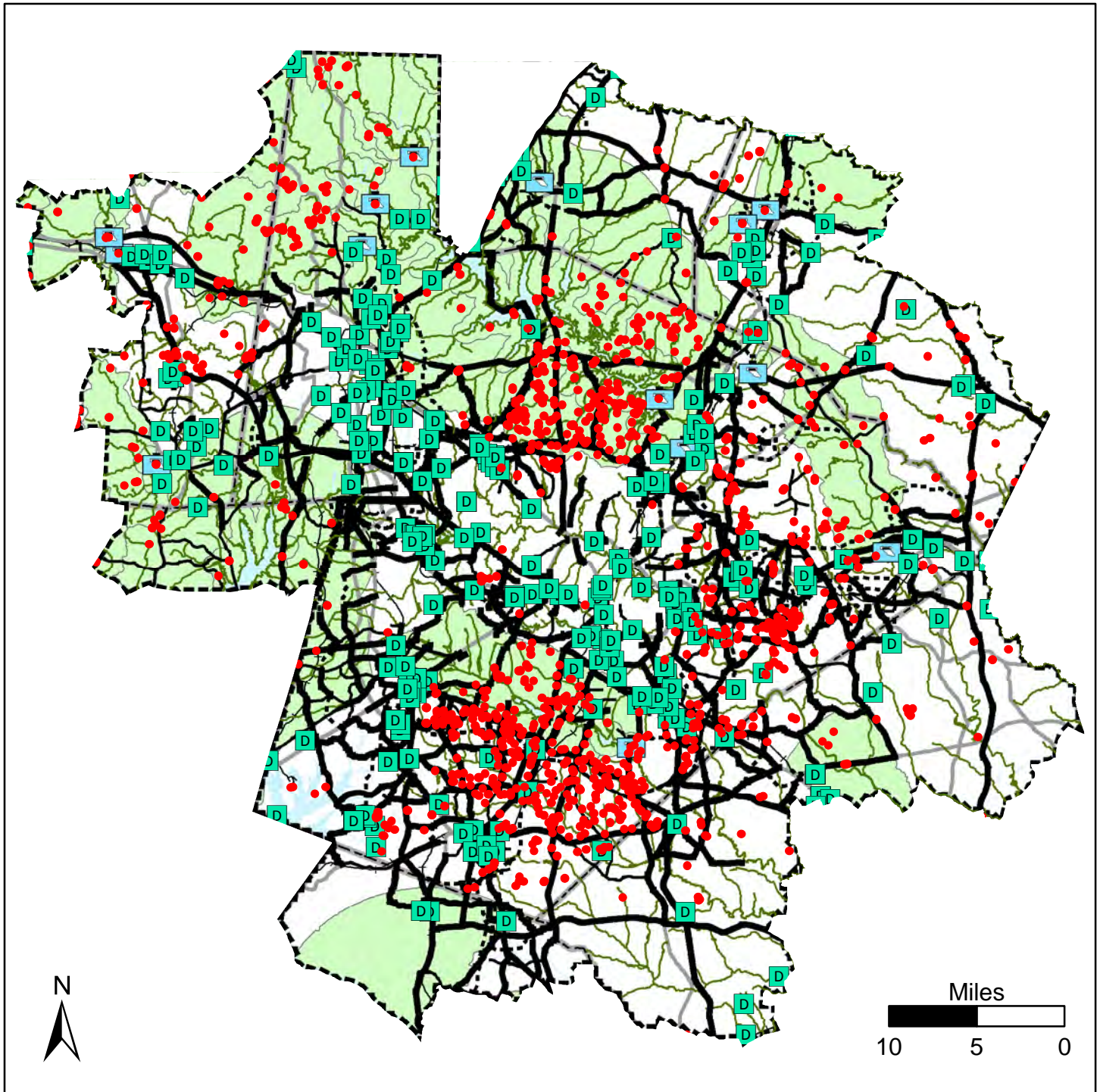


- |                                      |                             |                    |
|--------------------------------------|-----------------------------|--------------------|
| Impaired Streams                     | <b>CTP Highway Projects</b> | MPO Boundaries     |
| Outstanding Resource Management Zone | Modernization/Superstreet   | Major Roads        |
| Targeted Local Watershed             | Widening                    | Railroads          |
|                                      | New Location                | Counties           |
|                                      | Expressway; Freeway         | Major Water Bodies |

Map prepared by Capital Area MPO GIS staff  
 on January 10, 2018.

Information depicted hereon is for reference purposes only and is compiled from the best available sources.  
 The Capital Area MPO assumes no responsibility for errors arising from the misuse of this map.

# Water Supply 2045 MTP and CTP

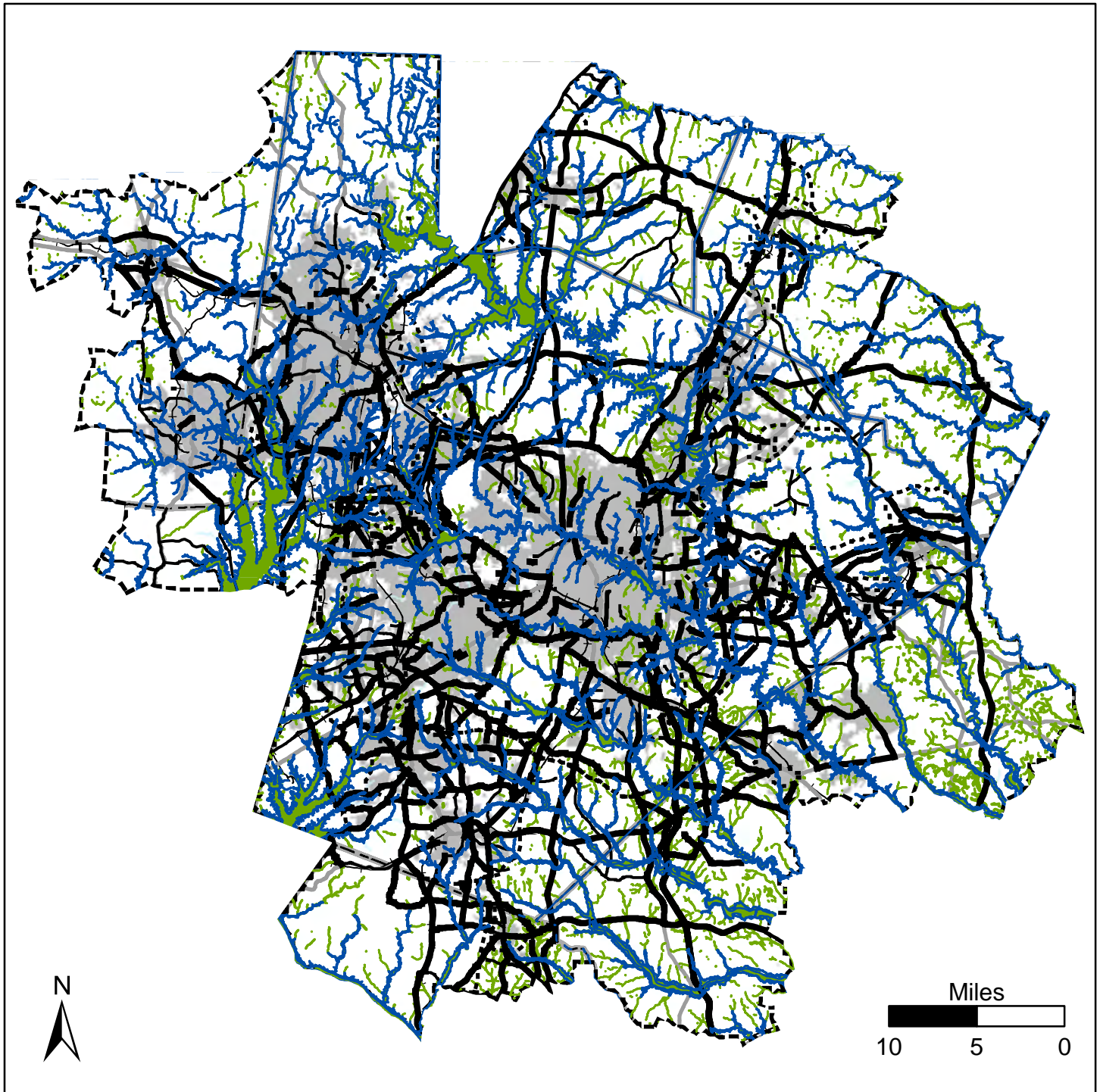


- Public Water Supply Sources
- NPDES Stormwater Permits
- ☒ Surface Water Intake
- Water Supply Watershed
- Nutrient Sensitive Waters
- CTP Highway Projects**
- Modernization/Superstreet
- Widening
- New Location
- Expressway; Freeway
- ☐ MPO Boundaries
- Major Roads
- Railroads
- ☐ Counties
- Major Water Bodies

Map prepared by Capital Area MPO GIS staff  
 on January 10, 2018.

Information depicted hereon is for reference purposes only and is compiled from the best available sources.  
 The Capital Area MPO assumes no responsibility for errors arising from the misuse of this map.

# Wetlands and Floodplains 2045 MTP and CTP



- |                 |                             |                      |
|-----------------|-----------------------------|----------------------|
| FMIS Floodplain | <b>CTP Highway Projects</b> | MPO Boundaries       |
| Wetland         | Modernization/Superstreet   | Major Roads          |
|                 | Widening                    | Railroads            |
|                 | New Location                | Counties             |
|                 | Expressway; Freeway         | Major Water Bodies   |
|                 |                             | Municipal Boundaries |

Map prepared by Capital Area MPO GIS staff  
 on January 10, 2018.

Information depicted hereon is for reference purposes only and is compiled from the best available sources.  
 The Capital Area MPO assumes no responsibility for errors arising from the misuse of this map.