



TRIANGLE REGION SCENARIO PLANNING INITIATIVE: GENERAL OVERVIEW PRESENTATION

DCHC MPO TRANSPORTATION ADVISORY COMMITTEE

OCTOBER 12, 2011

SEVEN HILLS
TOWN PLANNING GROUP



Kimley-Horn
and Associates, Inc.

IMAGINE 2040

- What is the big idea?

The initiative provides stakeholders in the Triangle Region an opportunity to explore and debate regional growth visions, their trade-offs, and alternative futures.

- End Game:

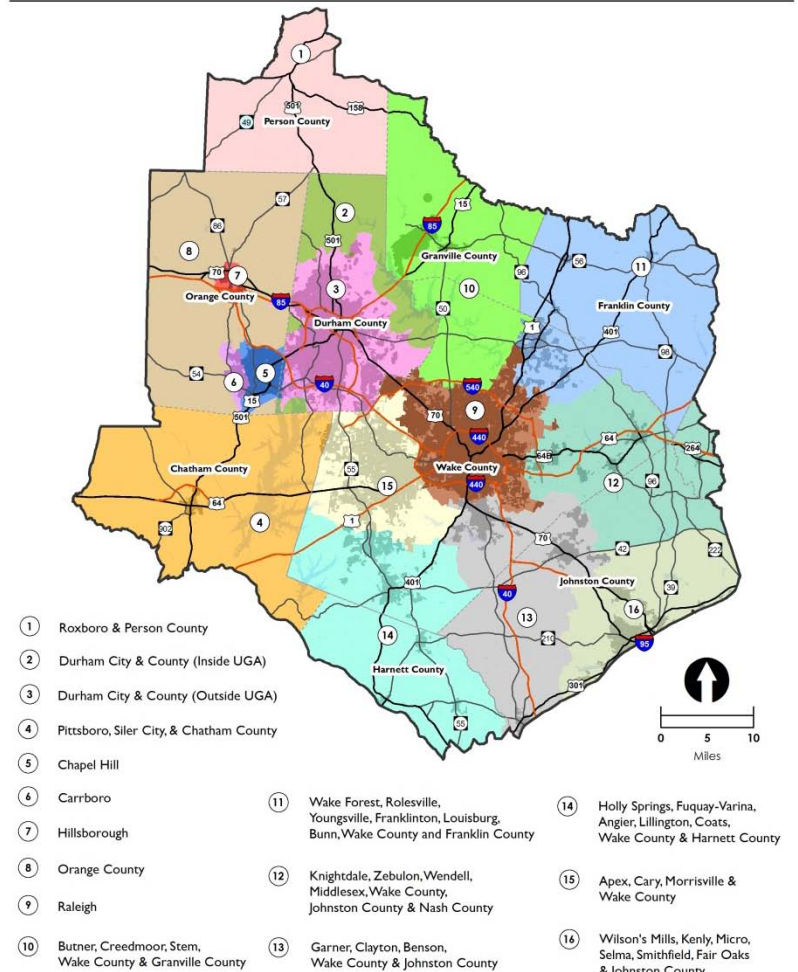
The scenario planning initiative will be one input for developing the Triangle's next LRTP, and used to allocate future growth in the region for running the Triangle Region Travel Demand Model.



STUDY AREA

- ❑ 2040 LRTP Update
- ❑ TRM V.5 Study Area
- ❑ 3,500 sq. mi.
- ❑ 2 MPO Planning Areas
- ❑ Local Governments Involved:
 - 10 counties
 - 40 cities & towns

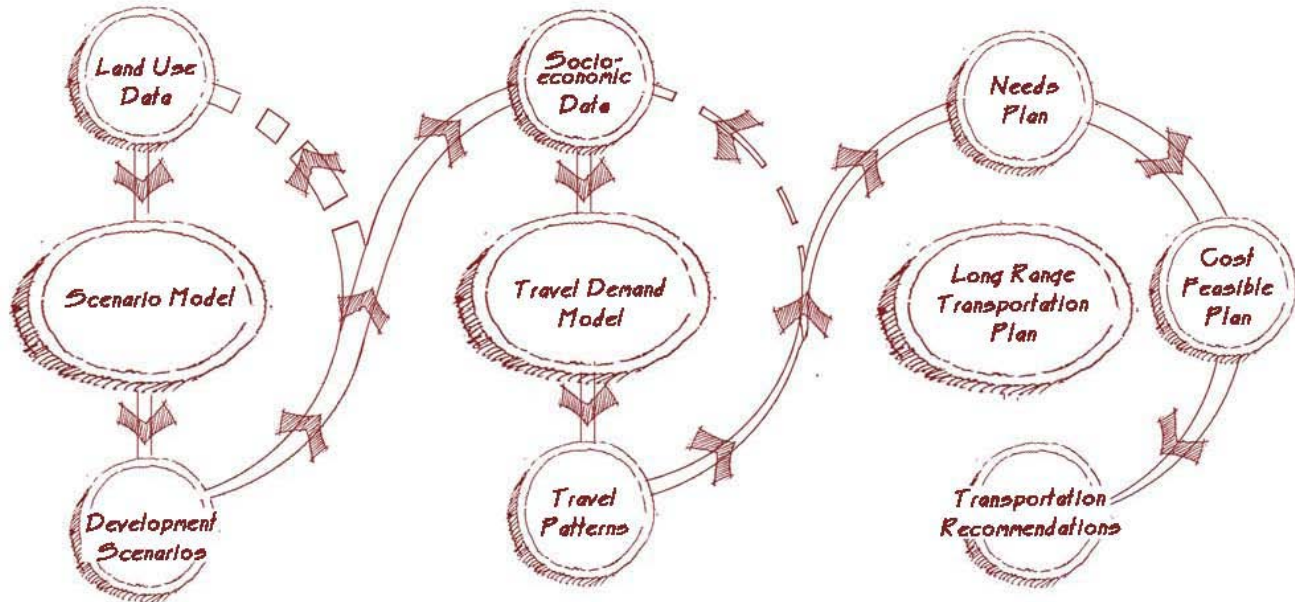
Imagine 2040 - Triangle Region Scenario Planning Initiative
Study Area & Sub-Region Boundaries Map



IMAGINE 2040

Triangle Region Scenario Planning Initiative

General Process Diagram



IMAGINE 2040

- Start to address big questions in the region:
 - Where do we want to grow?
 - Are we growing sustainably?
 - Can we pay for growth?
 - Are we still proud of where we live?



WHO IS INVOLVED?

Cities & Towns:

Angier	Erwin	Micro	Siler City
Apex	Fair Oaks	Middlesex	Smithfield
Benson	Franklinton	Morrisville	Stem
Bunn	Fuquay-Varina	Pittsboro	Wake Forest
Butner	Garner	Raleigh	Wendell
Carrboro	Hillsborough	Rolesville	Wilson's Mills
Cary	Holly Springs	Roxboro	Youngsville
Chapel Hill	Kenly	Selma	Zebulon
Clayton	Knightdale		
Coats	Lillington		
Creedmoor	Louisburg		
Durham	Mebane		

Counties:

Chatham	Harnett	Person
Durham	Johnston	Nash
Franklin	Orange	
Granville	Wake	

Regional Agencies:

Triangle Transit
Triangle J COG
Kerr – Tar Regional COG
The Research Triangle Park
TARPO
DCHC MPO
CAMPO

Federal Government:

Federal Highway Administration
Federal Transit Administration

State Government:

NC Department of Transportation
NC Department of Environment & Natural Resources

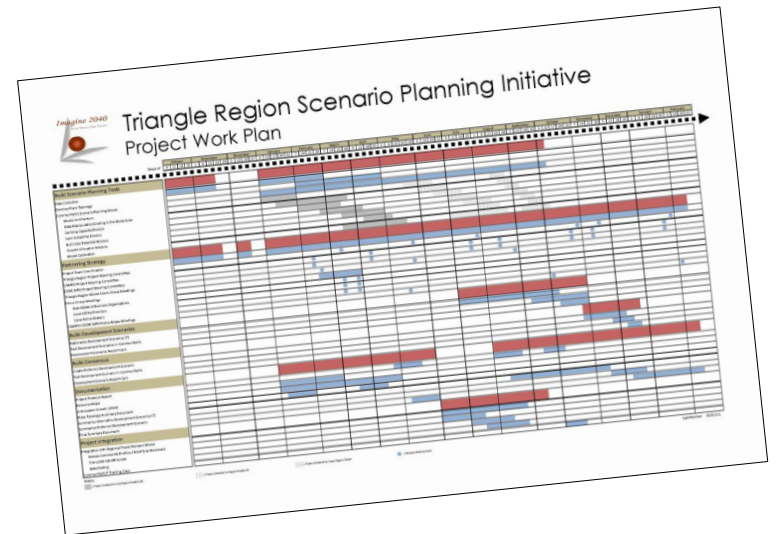
Special Interests:

Duke University
UNC – Chapel Hill
North Carolina Central University
NC State University
Urban Land Institute
Home Builders Association
Raleigh – Durham Airport Authority

PROJECT-AT-A-GLANCE

□ Six major components:

- build scenario planning tools
- partnering strategy
- build development scenarios
- build consensus
- documentation
- project integration



REGIONAL SCENARIO PLANNING

□ Role in the Project

Scenario planning will be used throughout the project to identify regional goals and community values, as well as explore alternatives for growth, development, and transportation investments in the region.



□ Beyond the Project

- Scenario planning tools are being developed for subareas in the Triangle Region.
- 3-day software training through CAMPO contract.
- Becomes a resource/tool for local government planning initiatives.



REGIONAL SCENARIO PLANNING

□ What are the challenges?

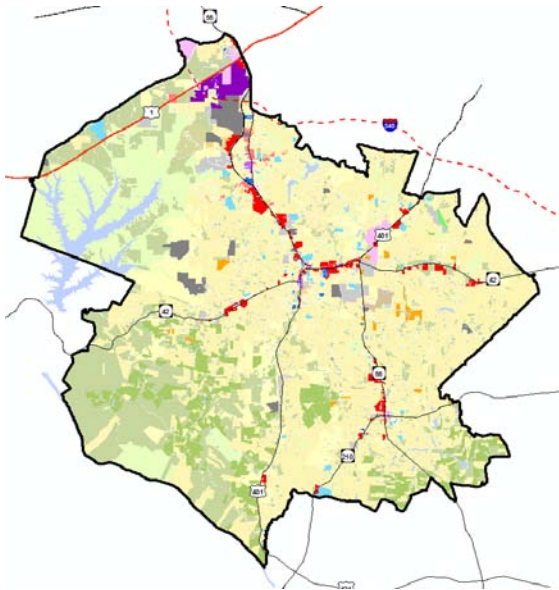
Allocating future year growth in the region can be challenging for the following reasons:

- It is difficult to normalize land use data submitted by individual cities, towns, & counties
- Changing growth forecasts or horizon years becomes time consuming
- Significant time is required to update data sets as change occurs
- The 'big project' changes everything
- Limited opportunities to test transportation – land use connection
- Difficulties encountered translating back to local plans

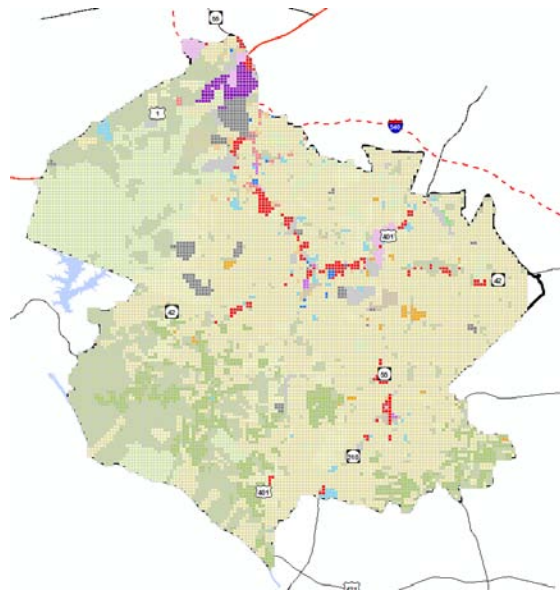


REGIONAL SCENARIO PLANNING

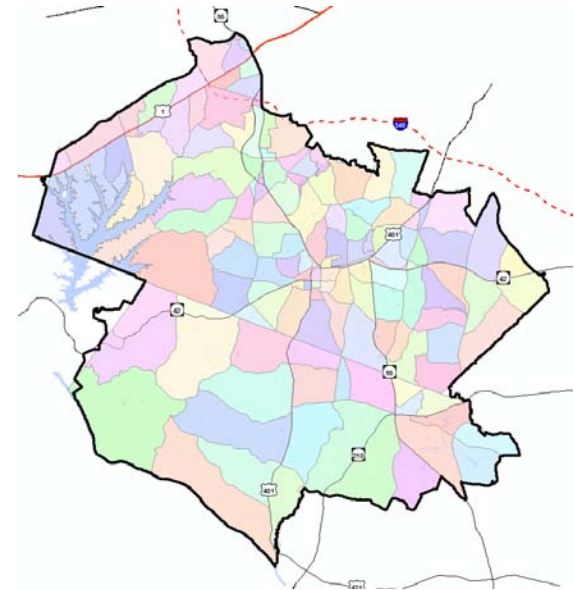
□ Running Through the Scales:



Sub-Region Models
(parcels)



Region Models
(grid cells)



Super Region Model
(TAZs)

REGIONAL SCENARIO PLANNING

Evaluate the trade-offs of competing scenarios:

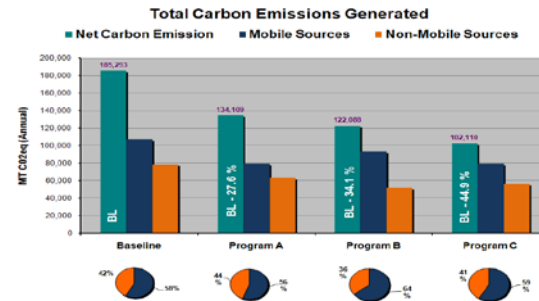


Topic	Scenario A	Scenario B	Scenario C
Agricultural Land Consumed: 1998 - 2020	174 sq mi	143 sq mi	65 sq mi

Topic	Scenario A	Scenario B	Scenario C
Infrastructure Cost 1998-2020 (Transportation, water, sewer, utilities)	\$38 billion \$\$\$\$\$	\$30 billion \$\$\$\$	\$22 billion \$\$\$

Topic	Scenario A	Scenario B	Scenario C
Single Family Homes vs. Condos, Apts. & Townhomes	SF 77%, Condos, etc. 23%	SF 75%, Condos, etc. 25%	SF 68%, Condos, etc. 32%

Topic	Scenario A	Scenario B	Scenario C
Transportation Choices	Car, Bus	Car, Bus	Car, Bus, Bicycle, Pedestrian



PROJECT DELIVERABLES

- Several supporting documents prepared in support of the scenario planning initiative, including:
 - Place Type Summary Document
 - Focus Group Workbooks
 - Technical Documentation
 - Project Resource Map Series
- A final report that summarizes the planning process, key findings, and recommendations generated from the scenario planning initiative.
- Alternative growth scenarios for the study area that will be evaluated further in the Triangle's next LRTP.
- Local jurisdictions may contemplate recommendations in the report as they update their locally-adopted plans and ordinances.



HOW DO OTHERS STAY INVOLVED?



- Regular project team coordination
- DCHC & CAMPO project steering committees
- Focus group meetings:
 - real estate & business development
 - chief planners & other policy administrators
 - local utility providers
 - practicing planners
- Regular TCC & TAC briefings



TRIANGLE REGION SCENARIO PLANNING INITIATIVE: GENERAL OVERVIEW PRESENTATION

DCHC MPO TRANSPORTATION ADVISORY COMMITTEE

OCTOBER 12, 2011

SEVEN HILLS
TOWN PLANNING GROUP



Kimley-Horn
and Associates, Inc.