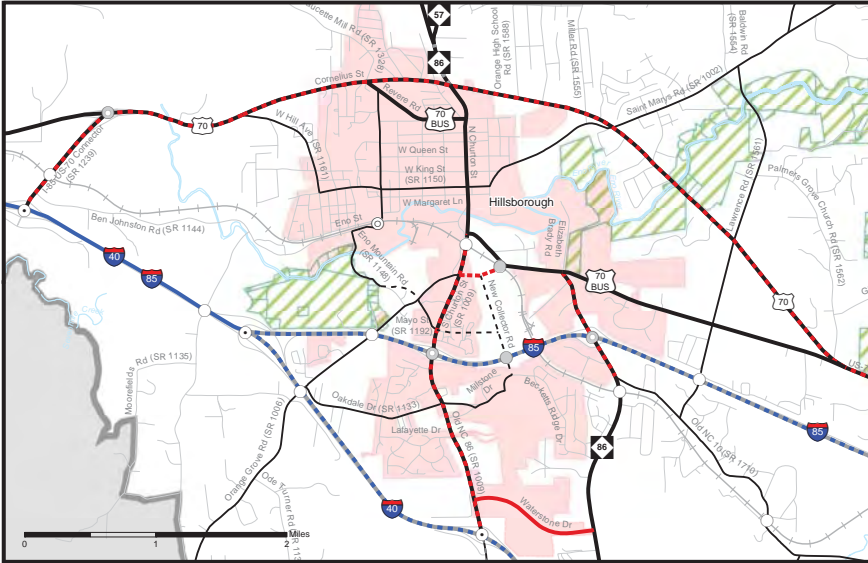
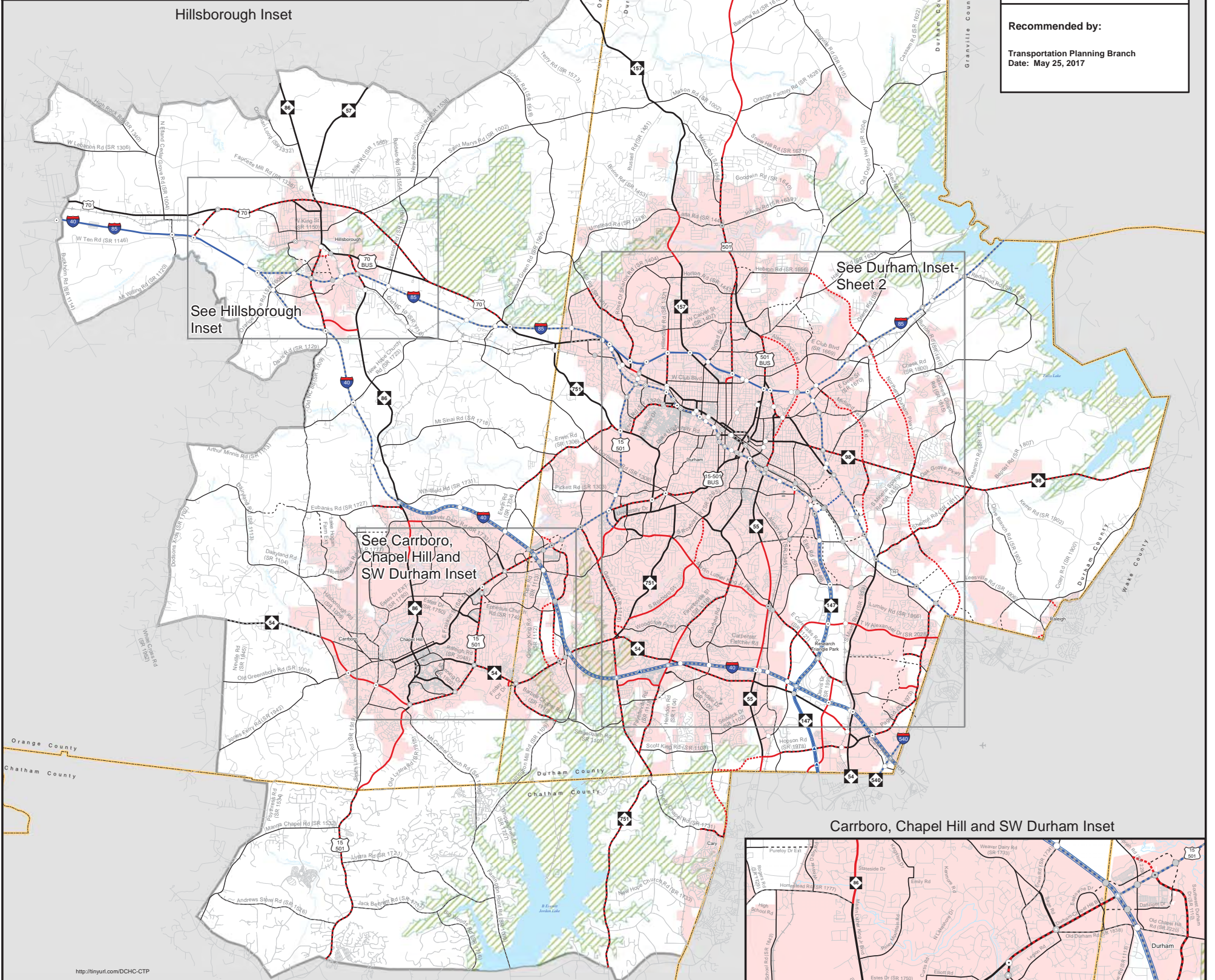


DCHC MPO - CTP ADOPTION SHEET AND HIGHWAY MAP



Hillsborough Inset



Adopted by:
 Durham-Chapel Hill-Carrboro MPO
 Date: May 10, 2017

NCDOT
 Date: August 3, 2017

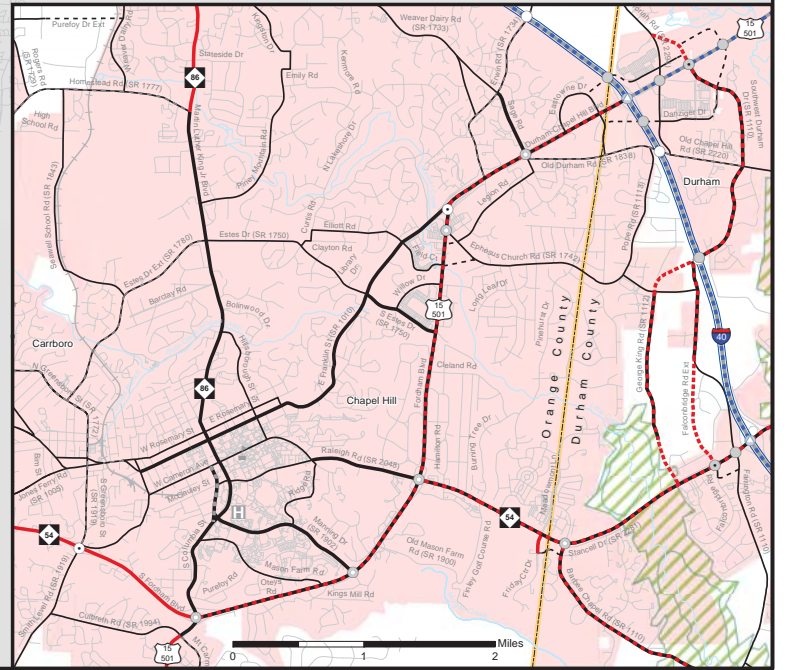
Recommended by:
 Transportation Planning Branch
 Date: May 25, 2017

See Hillsborough Inset

See Durham Inset Sheet 2

See Carrboro, Chapel Hill and SW Durham Inset

Carrboro, Chapel Hill and SW Durham Inset

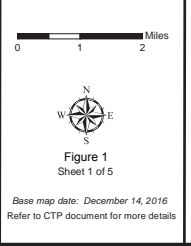


Note: The Strategic Transportation Investments (STI) law (House Bill 817) establishes design elements that emphasize safety, mobility, complete streets, and accessibility for multiple modes of travel. The "typical" highway cross sections used in this CTP were updated on May 5, 2014 in response to STI law.

NCDOT's Complete Streets Policy "requires that NCDOT's planners and designers will consider and incorporate multimodal alternatives in the design and improvement of all appropriate transportation projects within a growth area of a town or city unless exceptional circumstances exist." (For more information on Complete Streets, go to <http://www.completestreetsnc.org>.)

Note: The concepts shown on a CTP are for planning purposes and are subject to change. These concepts will need additional analysis to meet state and federal environmental regulations, to determine final locations and designs, and to be funded for implementation. Local zoning or subdivision ordinances may require the dedication of right of way based on the concepts shown on the CTP and local collector street plans, based on N.C.G.S. § 136-66.2 and § 136-66.10.

Sheet 1 Adoption Sheet and Highway Map	Legend	<ul style="list-style-type: none"> Freeways <ul style="list-style-type: none"> Existing Needs Improvement Recommended Freeways with Managed Lanes <ul style="list-style-type: none"> Existing Needs Improvement Recommended Expressways <ul style="list-style-type: none"> Existing Needs Improvement Recommended Boulevards <ul style="list-style-type: none"> Existing Needs Improvement Recommended 	<ul style="list-style-type: none"> Other Major Thoroughfares <ul style="list-style-type: none"> Existing Needs Improvement Recommended Minor Thoroughfares <ul style="list-style-type: none"> Existing Needs Improvement Recommended Interchanges (or Intersections) <ul style="list-style-type: none"> Grade Separations <ul style="list-style-type: none"> Existing Needs Improvement Recommended Interchanges with Managed Lanes Access <ul style="list-style-type: none"> Existing Needs Improvement Recommended
---	---------------	--	--



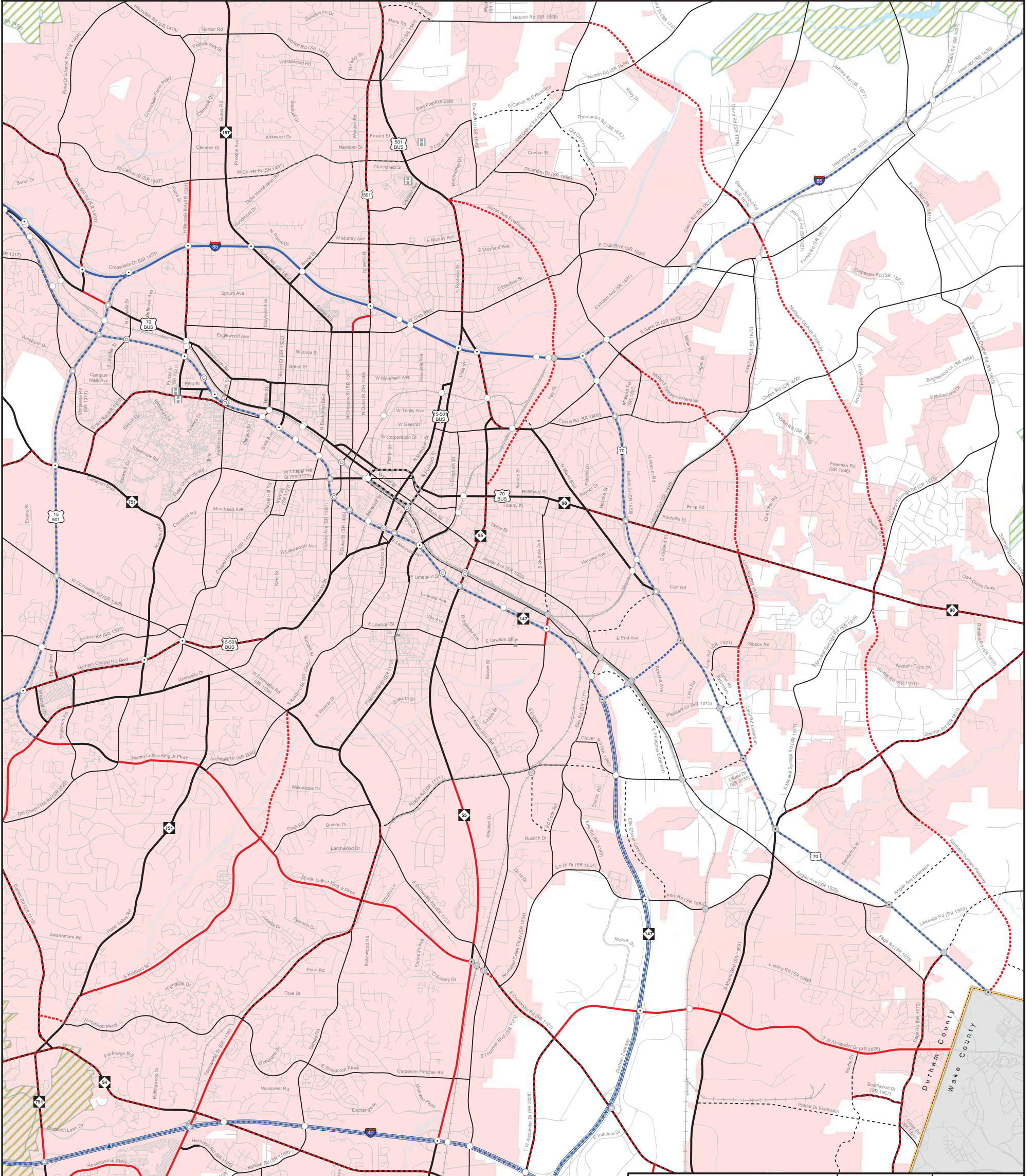
**Adoption Sheet/
Highway Map**

**Durham-Chapel Hill-
Carrboro MPO**
 Chatham, Durham, and Orange Counties
 North Carolina

**Comprehensive
Transportation Plan**
 Plan date: May 10, 2017

Back of Figure

DCHC MPO - CTP - HIGHWAY MAP (DURHAM INSET)

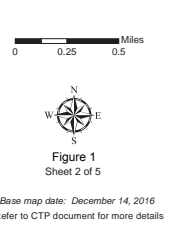


Note: The Strategic Transportation Investments (STI) law (House Bill 817) establishes design elements that emphasize safety, mobility, complete streets, and accessibility for multiple modes of travel. The "typical" highway cross sections used in this CTP were updated on May 5, 2014 in response to STI law.

NC DOT's Complete Streets Policy "requires that NCDOT's planners and designers will consider and incorporate multimodal alternatives in the design and improvement of all appropriate transportation projects within a growth area of a town or city unless exceptional circumstances exist." (For more information on Complete Streets, go to <http://www.completestreets.org/>.)

Note: The concepts shown on a CTP are for planning purposes and are subject to change. These concepts will need additional analysis to meet state and federal environmental regulations, to determine final locations and designs, and to be funded for implementation. Local zoning or subdivision ordinances may require the dedication of right of way based on the concepts shown on the CTP and local collector street plans, based on N.C.G.S. § 136-66.2 and § 136-66.10.

Freeways	Existing	Other Major Thoroughfares	Existing
Needs Improvement	Needs Improvement	Needs Improvement	Needs Improvement
Recommended	Recommended	Recommended	Recommended
Freeways with Managed Lanes	Existing	Minor Thoroughfares	Existing
Needs Improvement	Needs Improvement	Needs Improvement	Needs Improvement
Recommended	Recommended	Recommended	Recommended
Expressways	Existing	Interchanges (or Intersections)	Grade Separations
Needs Improvement	Needs Improvement	Needs Improvement	Needs Improvement
Recommended	Recommended	Recommended	Recommended
Boulevards	Existing	Interchanges with Managed Lanes Access	Existing
Needs Improvement	Needs Improvement	Needs Improvement	Needs Improvement
Recommended	Recommended	Recommended	Recommended

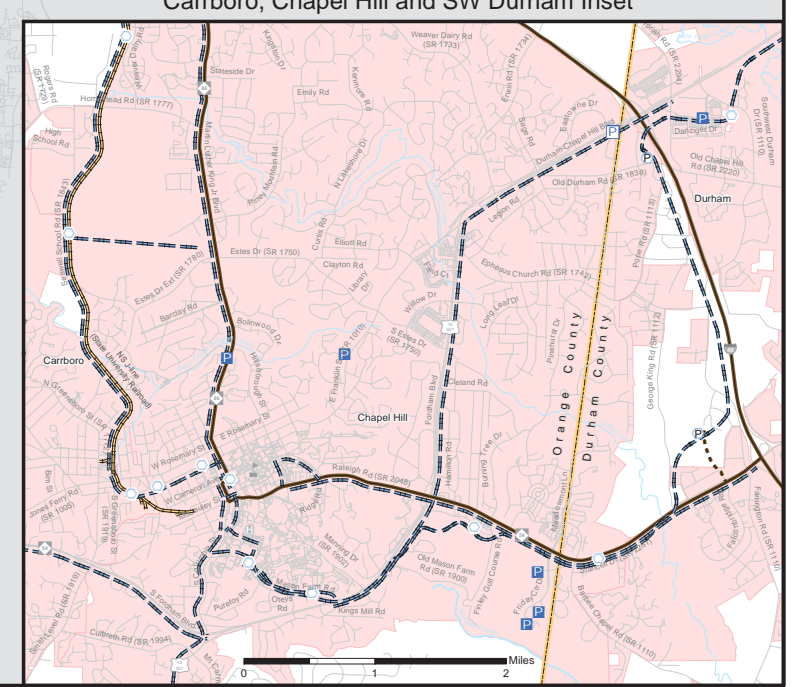
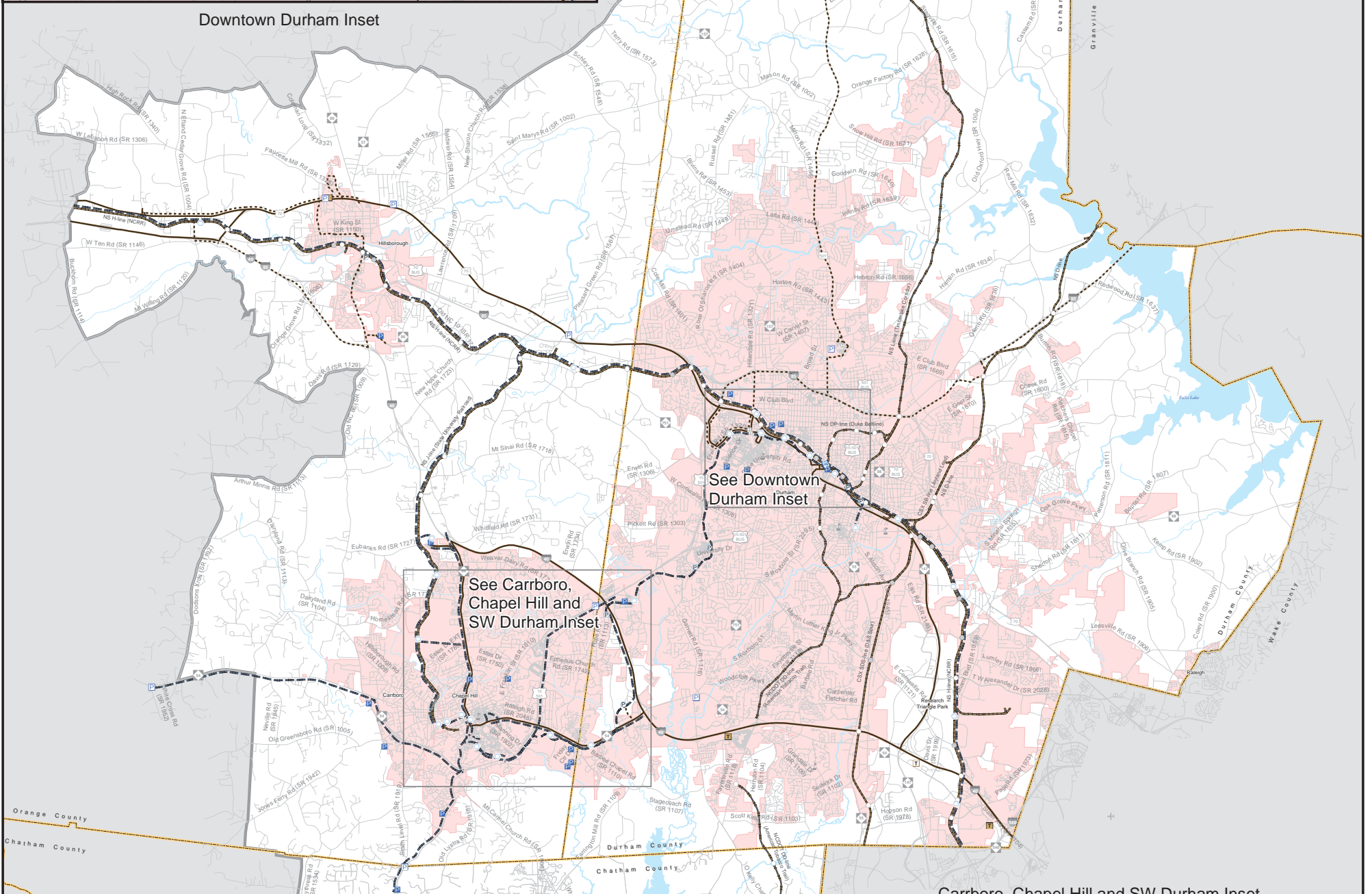
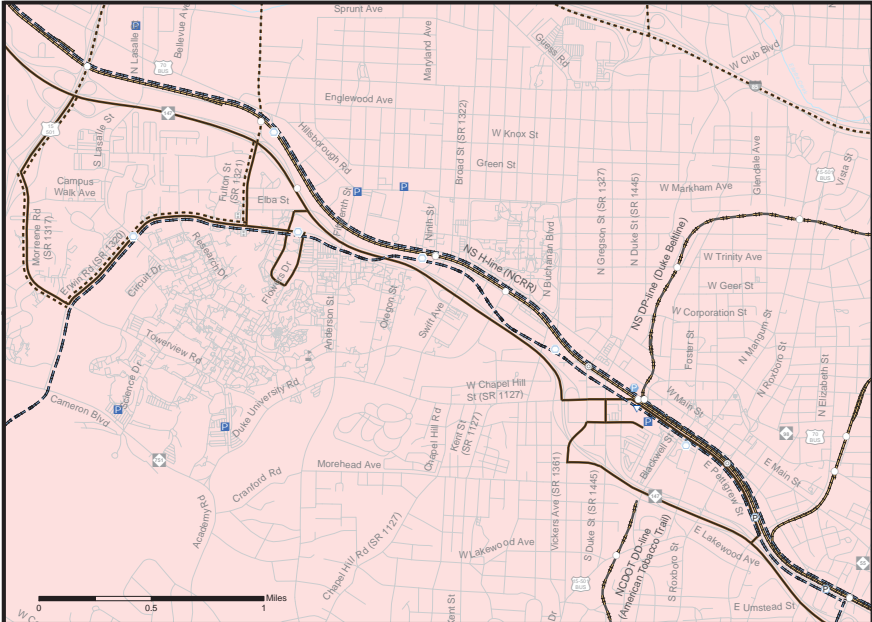


Highway Map (Durham Inset)

Durham-Chapel Hill-Carrboro MPO
Comprehensive Transportation Plan
Plan date: May 10, 2017

Back of Figure

DCHC MPO - CTP - PUBLIC TRANSPORTATION AND RAIL MAP



Note: The concepts shown on a CTP are for planning purposes and are subject to change. These concepts will need additional analysis to meet state and federal environmental regulations, to determine final locations and designs, and to be funded for implementation. Local zoning or subdivision ordinances may require the dedication of right of way based on the concepts shown on the CTP and local collector street plans, based on N.C.G.S. § 136-66.2 and § 136-66.10.

Note: For more information on the Durham-Orange Light Rail Transit Project, go to <http://www.ourtransitfuture.com>.

Note: The Strategic Transportation Investments (STI) law (House Bill 817) establishes design elements that emphasize safety, mobility, complete streets, and accessibility for multiple modes of travel. The "typical" highway cross sections used in this CTP were updated on May 5, 2014 in response to STI law.

NCDOT's Complete Streets Policy requires that NCDOT's planners and designers will consider and incorporate multimodal alternatives in the design and improvement of all appropriate transportation projects within a growth area of a town or city unless exceptional circumstances exist. (For more information on Complete Streets, go to <http://www.completestreetsnc.org/>.)

<p>Fixed Guideway</p> <ul style="list-style-type: none"> Existing Needs Improvement Recommended <p>Multimodal Connector</p> <ul style="list-style-type: none"> Existing Recommended <p>Rail Stations</p> <ul style="list-style-type: none"> Existing Recommended <p>Transit Center</p> <ul style="list-style-type: none"> Existing Recommended 	<p>Rail Corridor</p> <ul style="list-style-type: none"> Active Inactive Recommended <p>Park and Ride Lot</p> <ul style="list-style-type: none"> Existing Recommended <p>Rail Stations with Park and Ride Lot</p> <ul style="list-style-type: none"> Existing Recommended <p>Transit Center with Park and Ride Lot</p> <ul style="list-style-type: none"> Existing Recommended 	<p>Operational Strategies</p> <ul style="list-style-type: none"> Existing Needs Improvement Recommended <p>Grade Separations</p> <ul style="list-style-type: none"> Existing Needs Improvement Recommended <p>Hospitals</p> <p>Schools</p> <p>Airports</p>
---	--	---

Scale: 0 1 2 Miles

Figure 1
Sheet 3A of 5

Base map date: December 14, 2016
Refer to CTP document for more details

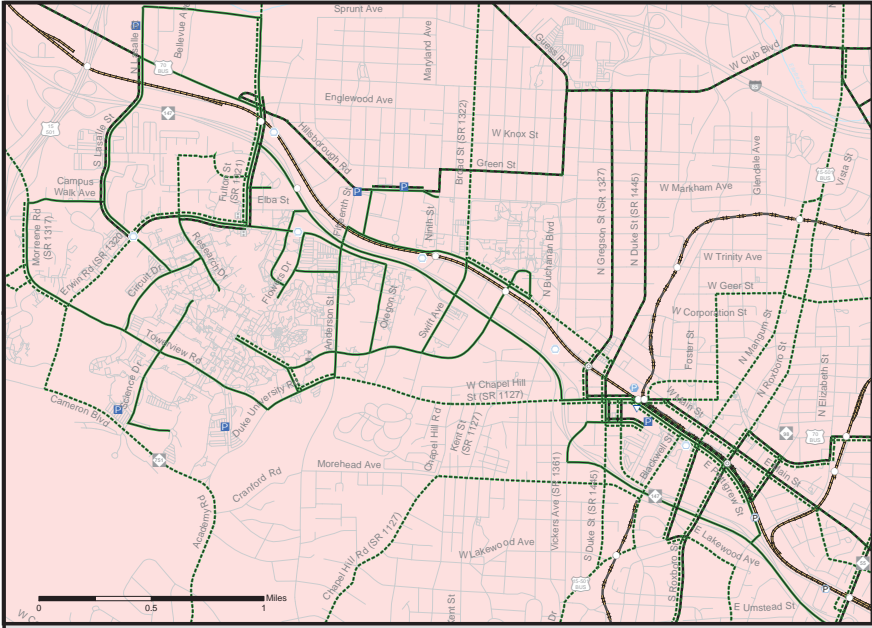
Public Transportation and Rail Map

Durham-Chapel Hill-Carrboro MPO Comprehensive Transportation Plan

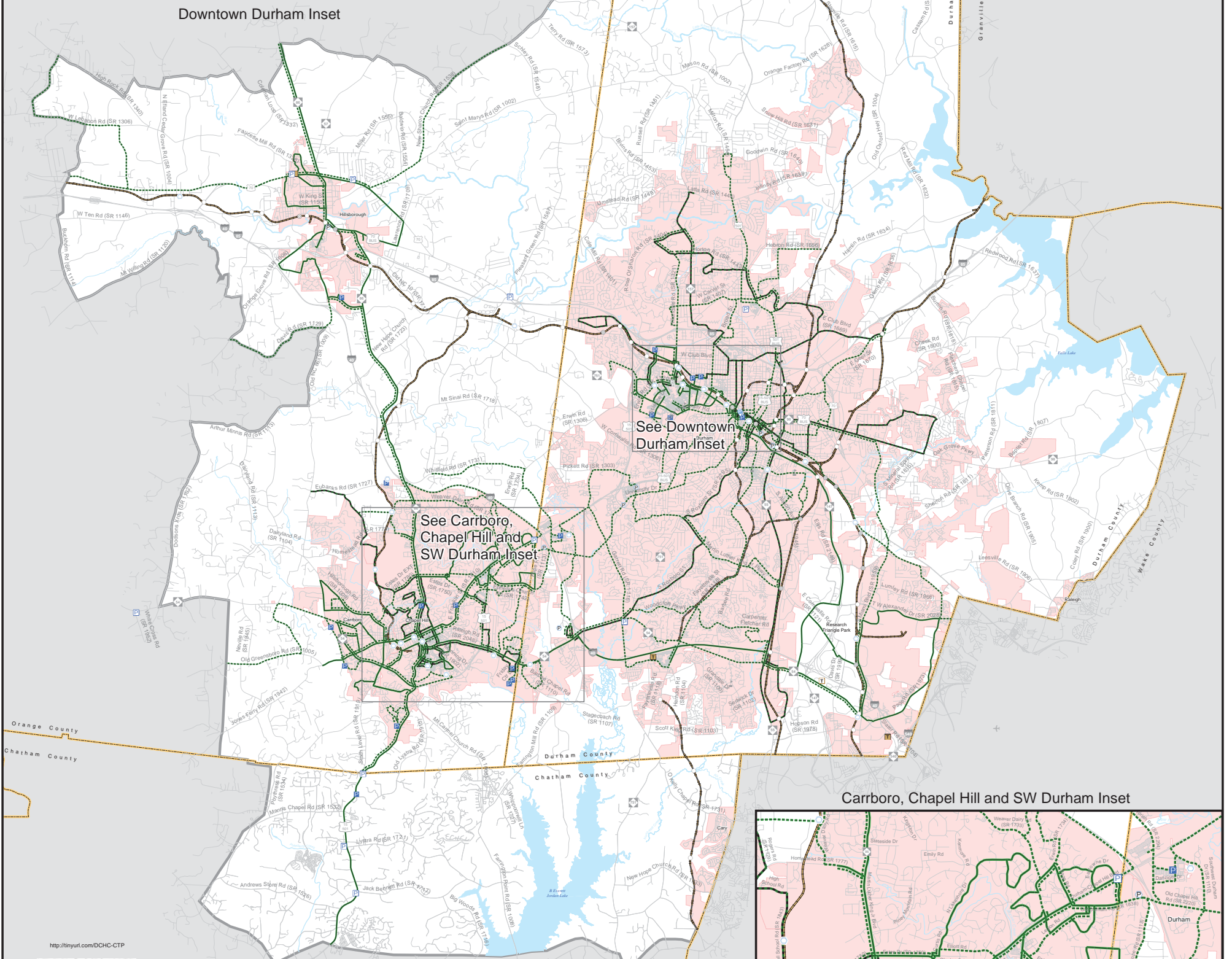
Plan date: May 10, 2017

Back of Figure

DCHC MPO - CTP PUBLIC TRANSPORTATION MAP



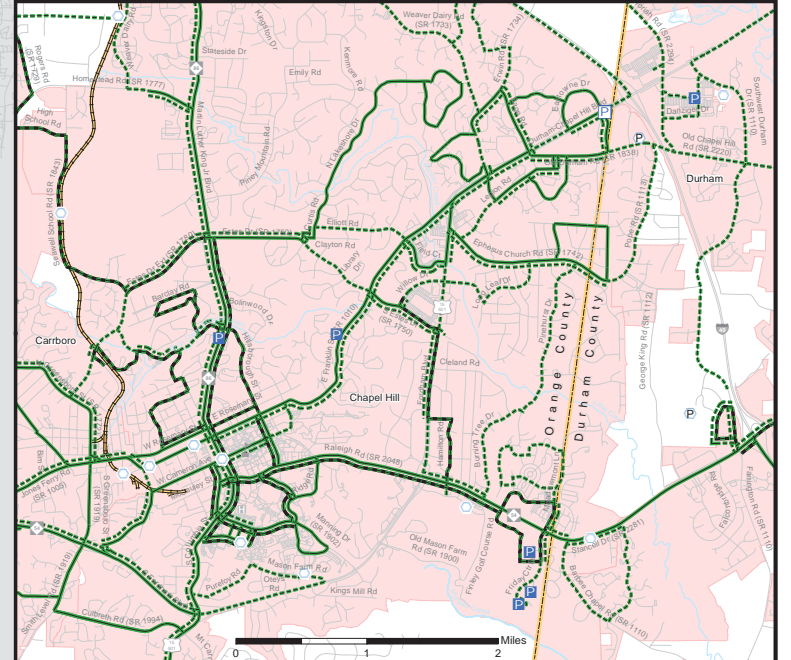
Downtown Durham Inset



See Downtown Durham Inset

See Carrboro, Chapel Hill and SW Durham Inset

Carrboro, Chapel Hill and SW Durham Inset



Note: The concepts shown on a CTP are for planning purposes and are subject to change. These concepts will need additional analysis to meet state and federal environmental regulations, to determine final locations and designs, and to be funded for implementation. Local zoning or subdivision ordinances may require the dedication of right of way based on the concepts shown on the CTP and local collector street plans, based on N.C.G.S. § 136-66.2 and § 136-66.10.

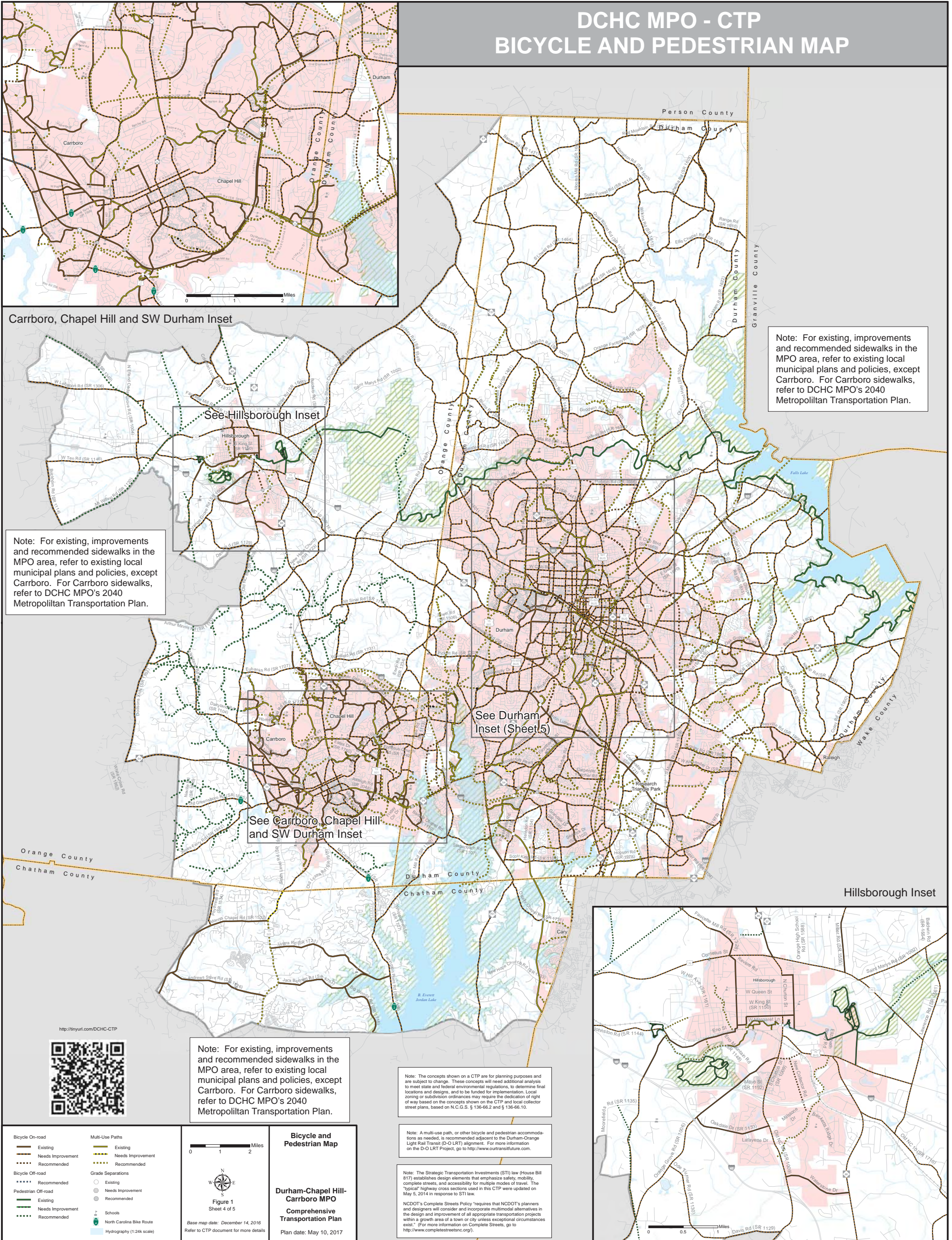
Note: For more information on the Durham-Orange Light Rail Transit Project, including bus route and park and ride access, go to <http://www.ourtransitfuture.com>.

Note: The Strategic Transportation Investments (STI) law (House Bill 817) establishes design elements that emphasize safety, mobility, complete streets, and accessibility for multiple modes of travel. The "typical" highway cross sections used in this CTP were updated on May 5, 2014 in response to STI law.
NCDOT's Complete Streets Policy requires that NCDOT's planners and designers will consider and incorporate multimodal alternatives in the design and improvement of all appropriate transportation projects within a growth area of a town or city unless exceptional circumstances exist. (For more information on Complete Streets, go to <http://www.completestreetsnc.org/>).

<p>Bus Routes</p> <ul style="list-style-type: none"> Existing Needs Improvement Recommended <p>Multimodal Connector</p> <ul style="list-style-type: none"> Existing Recommended <p>Rail Stations</p> <ul style="list-style-type: none"> Existing Recommended <p>Transit Center</p> <ul style="list-style-type: none"> Existing Recommended 	<p>Rail Corridor</p> <ul style="list-style-type: none"> Active Inactive Recommended <p>Park and Ride Lot</p> <ul style="list-style-type: none"> Existing Recommended <p>Transit Center with Park and Ride Lot</p> <ul style="list-style-type: none"> Existing Recommended 	<p>Grade Separations</p> <ul style="list-style-type: none"> Existing Needs Improvement Recommended <p>Hospitals</p> <p>Schools</p> <p>Airports</p>	<p>0 1 2 Miles</p> <p>Figure 1 Sheet 3B of 5</p> <p>Base map date: December 14, 2016 Refer to CTP document for more details</p>	<p>Public Transportation Map</p> <p>Durham-Chapel Hill-Carrboro MPO</p> <p>Comprehensive Transportation Plan</p> <p>Plan date: May 10, 2017</p>
---	---	---	---	--

Back of Figure

DCHC MPO - CTP BICYCLE AND PEDESTRIAN MAP



Carrboro, Chapel Hill and SW Durham Inset

See Hillsborough Inset

See Durham Inset (Sheet 5)

See Carrboro, Chapel Hill and SW Durham Inset

Hillsborough Inset

Note: For existing, improvements and recommended sidewalks in the MPO area, refer to existing local municipal plans and policies, except Carrboro. For Carrboro sidewalks, refer to DCHC MPO's 2040 Metropolitan Transportation Plan.

Note: For existing, improvements and recommended sidewalks in the MPO area, refer to existing local municipal plans and policies, except Carrboro. For Carrboro sidewalks, refer to DCHC MPO's 2040 Metropolitan Transportation Plan.

Note: For existing, improvements and recommended sidewalks in the MPO area, refer to existing local municipal plans and policies, except Carrboro. For Carrboro sidewalks, refer to DCHC MPO's 2040 Metropolitan Transportation Plan.

Note: The concepts shown on a CTP are for planning purposes and are subject to change. These concepts will need additional analysis to meet state and federal environmental regulations, to determine final locations and designs, and to be funded for implementation. Local zoning or subdivision ordinances may require the dedication of right of way based on the concepts shown on the CTP and local collector street plans, based on N.C.G.S. § 136-66.2 and § 136-66.10.

Note: A multi-use path, or other bicycle and pedestrian accommodations as needed, is recommended adjacent to the Durham-Orange Light Rail Transit (D-O LRT) alignment. For more information on the D-O LRT Project, go to <http://www.ourtransfuture.com>.

Note: The Strategic Transportation Investments (STI) law (House Bill 817) establishes design elements that emphasize safety, mobility, complete streets, and accessibility for multiple modes of travel. The "typical" highway cross sections used in this CTP were updated on May 5, 2014 in response to STI law.

NCDOT's Complete Streets Policy "requires that NCDOT's planners and designers will consider and incorporate multimodal alternatives in the design and improvement of all appropriate transportation projects within a growth area of a town or city unless exceptional circumstances exist." For more information on Complete Streets, go to <http://www.completestreetsnc.org/>.



<http://tinyurl.com/DCHC-CTP>

<p>Bicycle On-road</p> <ul style="list-style-type: none"> Existing Needs Improvement Recommended <p>Bicycle Off-road</p> <ul style="list-style-type: none"> Recommended <p>Pedestrian Off-road</p> <ul style="list-style-type: none"> Existing Needs Improvement Recommended 	<p>Multi-Use Paths</p> <ul style="list-style-type: none"> Existing Needs Improvement Recommended <p>Grade Separations</p> <ul style="list-style-type: none"> Existing Needs Improvement Recommended <ul style="list-style-type: none"> Schools North Carolina Bike Route Hydrography (1:24k scale)
--	---

0 1 2 Miles

Figure 1
Sheet 4 of 5

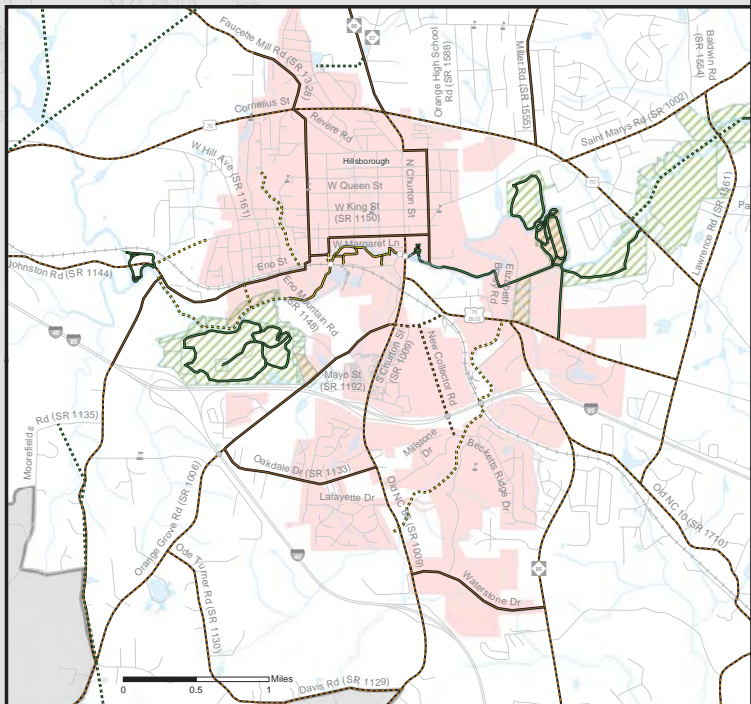
Base map date: December 14, 2016
Refer to CTP document for more details

Bicycle and Pedestrian Map

Durham-Chapel Hill-Carrboro MPO

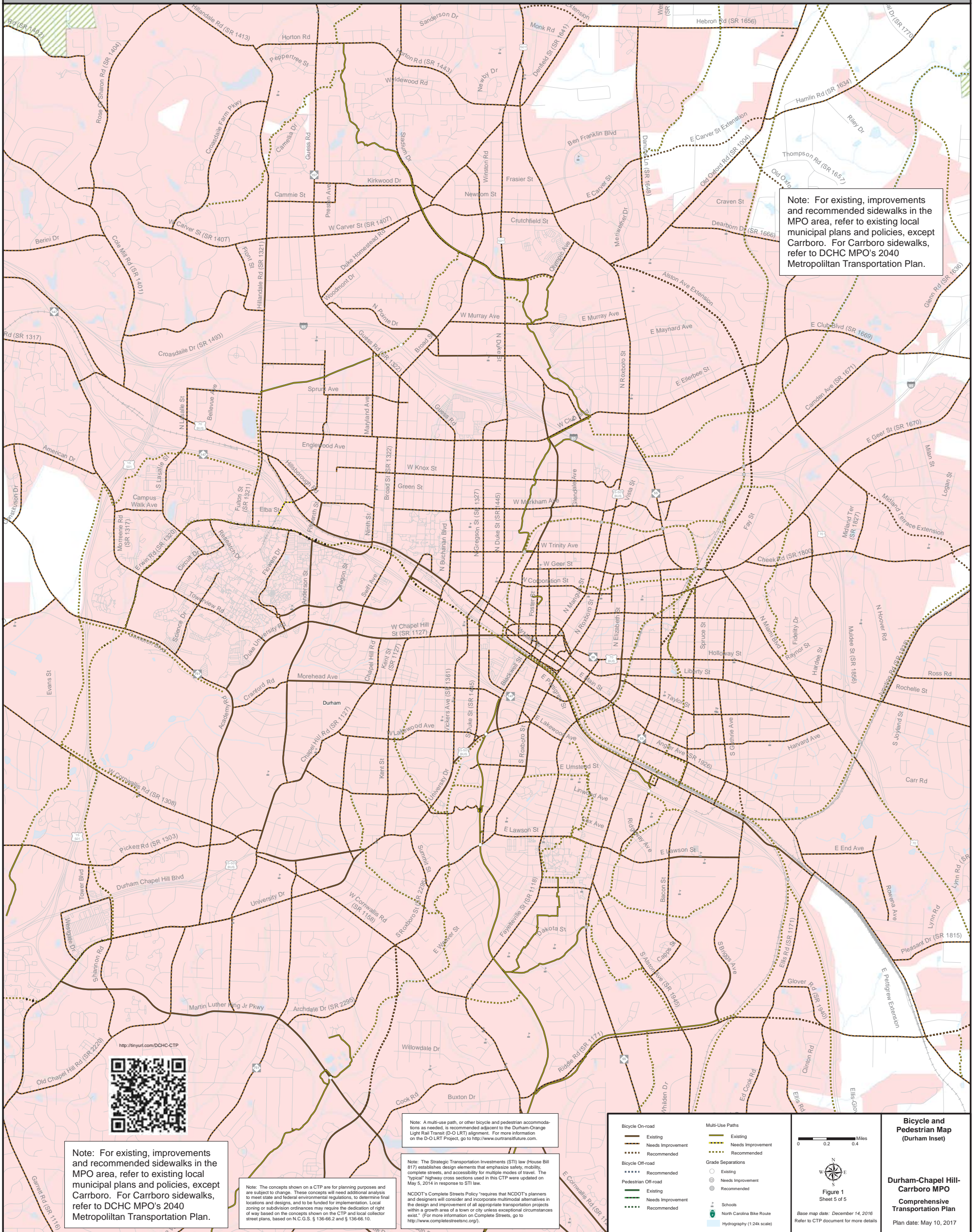
Comprehensive Transportation Plan

Plan date: May 10, 2017



Back of Figure

DCHC MPO - CTP - BICYCLE & PEDESTRIAN MAP (DURHAM INSET)



Note: For existing, improvements and recommended sidewalks in the MPO area, refer to existing local municipal plans and policies, except Carrboro. For Carrboro sidewalks, refer to DCHC MPO's 2040 Metropolitan Transportation Plan.

Note: A multi-use path, or other bicycle and pedestrian accommodations as needed, is recommended adjacent to the Durham-Orange Light Rail Transit (D-O LRT) alignment. For more information on the D-O LRT Project, go to <http://www.ourtransitfuture.com>.

Note: The Strategic Transportation Investments (STI) law (House Bill 817) establishes design elements that emphasize safety, mobility, complete streets, and accessibility for multiple modes of travel. The "typical" highway cross sections used in this CTP were updated on May 5, 2014 in response to STI law.

NCDOT's Complete Streets Policy "requires that NCDOT's planners and designers will consider and incorporate multimodal alternatives in the design and improvement of all appropriate transportation projects within a growth area of a town or city unless exceptional circumstances exist." (For more information on Complete Streets, go to <http://www.completestreetsnc.org/>.)

Note: The concepts shown on a CTP are for planning purposes and are subject to change. These concepts will need additional analysis to meet state and federal environmental regulations, to determine final locations and designs, and to be funded for implementation. Local zoning or subdivision ordinances may require the dedication of right of way based on the concepts shown on the CTP and local collector street plans, based on N.C.G.S. § 136-66.2 and § 136-66.10.

Note: For existing, improvements and recommended sidewalks in the MPO area, refer to existing local municipal plans and policies, except Carrboro. For Carrboro sidewalks, refer to DCHC MPO's 2040 Metropolitan Transportation Plan.

Bicycle On-road Existing Needs Improvement Recommended Bicycle Off-road Recommended Pedestrian Off-road Existing Needs Improvement Recommended	Multi-Use Paths Existing Needs Improvement Recommended Grade Separations Existing Needs Improvement Recommended Schools North Carolina Bike Route Hydrography (1:24k scale)	 <p>Figure 1 Sheet 5 of 5</p> <p>Base map date: December 14, 2016 Refer to CTP document for more details</p>	<p>Bicycle and Pedestrian Map (Durham Inset)</p> <p>Durham-Chapel Hill-Carrboro MPO Comprehensive Transportation Plan</p> <p>Plan date: May 10, 2017</p>
--	---	---	--

Back of Figure