

3 – Socioeconomic Data (SE Data)

Purpose

The SE Data depicts the growth and total households, population and employment from the years 2010 through 2040. Households and employment are the generators and attractors of trips, and thus understanding the forecasted location of these units helps to interpret where travel demand will likely grow in the future. The SE Data is a critical input into the Triangle Regional Model (TRM), which among other measurements compares the supply and demand for travel facilities and services, such as roadways and transit, and is used as the principal tool for identifying future transportation deficiencies.

Content

- Guide totals are on page 3-2
- Land Use model information is on page 3-3
- County household growth maps are on pages 3-4 through 3-6
- County employment growth maps are on pages 3-7 through 3-9

Guide Totals

The following two tables depict the county-level population and employment guide totals used in the land use modeling for the CTP. These are the same values that were used for the 2040 Metropolitan Transportation Plan (2040 MTP). The MPO is in the process of updating the SE Data and land use model (i.e., Community Visualization) however, the model update will not be completed until December 2015, thus requiring the use of the current SE Data and land use model.

- Population -- The population forecast is from the North Carolina Office of State Budget and Management (OSBM) and is based on their May 2011 reporting.
- Employment – The employment forecast uses base data from the North Carolina Employment Security Commission and growth data from Woods and Poole Economics.

Population			
<i>--Guide Totals--</i>	2040 LRTP		
Jurisdiction	2010	2040	Annual Rate
Durham County	268,925	432,571	1.6%
Orange County	134,325	197,675	1.3%
Chatham County ⁽¹⁾⁽²⁾	38,991	71,672	2.0%
Person County ⁽¹⁾	31,845	44,784	1.1%
Total	474,086	746,702	1.5%

Employment			
<i>--Guide Totals--</i>	2040 LRTP		
Jurisdiction	2010	2040	Annual Rate
Durham County	194,770	306,637	1.5%
Orange County	70,491	119,787	1.8%
Chatham County	10,011	19,509	2.2%
Person County	8,791	13,093	1.3%
Total	284,063	459,026	1.6%

Land Use Model

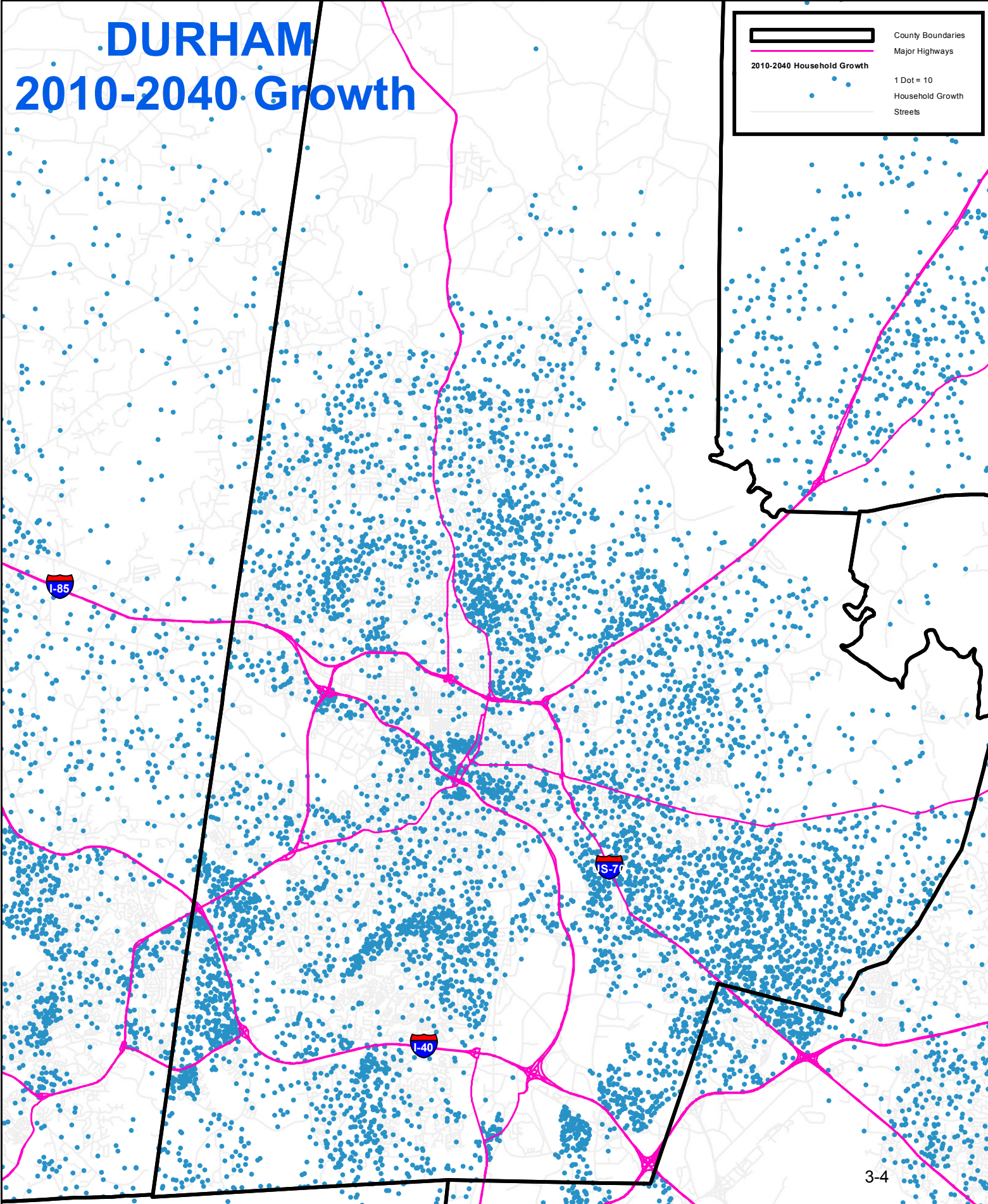
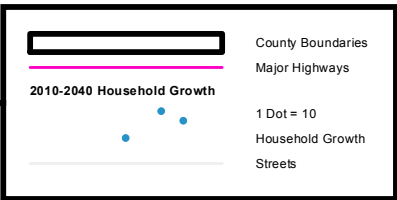
The DCHC MPO used the Community Visualization land use modeling process to create a land use scenario using the long-range transportation plans of the various jurisdictions and counties of the Triangle region. The current zoning was used if a long-range plan was not adopted.

The six maps on the following pages display the growth distribution of households and employment from 2011 through 2040. Each dot represents ten households or jobs.

Maps that show the total households and employment, and that use a different display (such as grid cells) are available under the SE Data section of the following Deficiency Analysis Web page: <http://bit.ly/1y9FGNb>

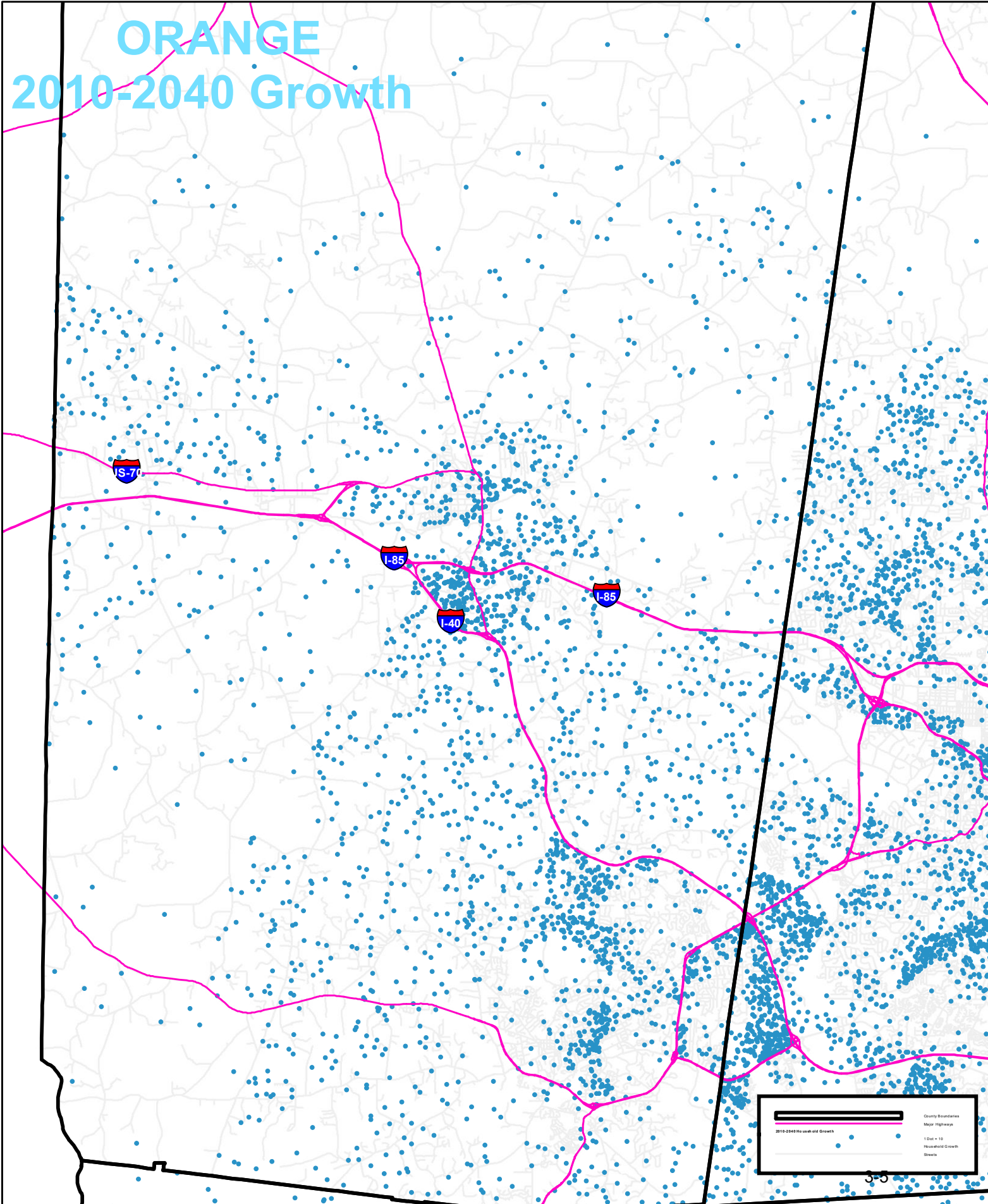
SE Data--Household

DURHAM 2010-2040 Growth



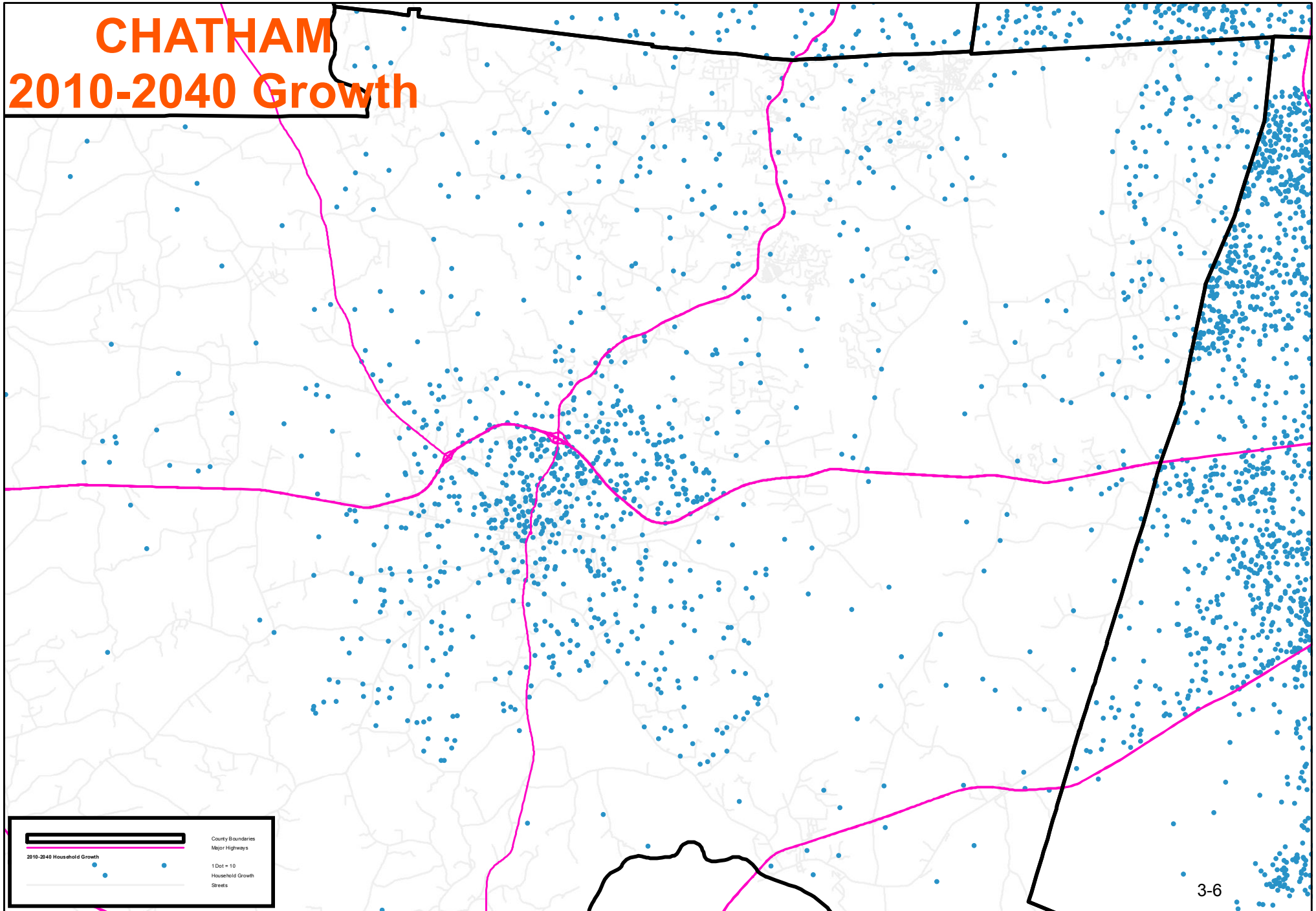
SE Data--Household

ORANGE
2010-2040 Growth



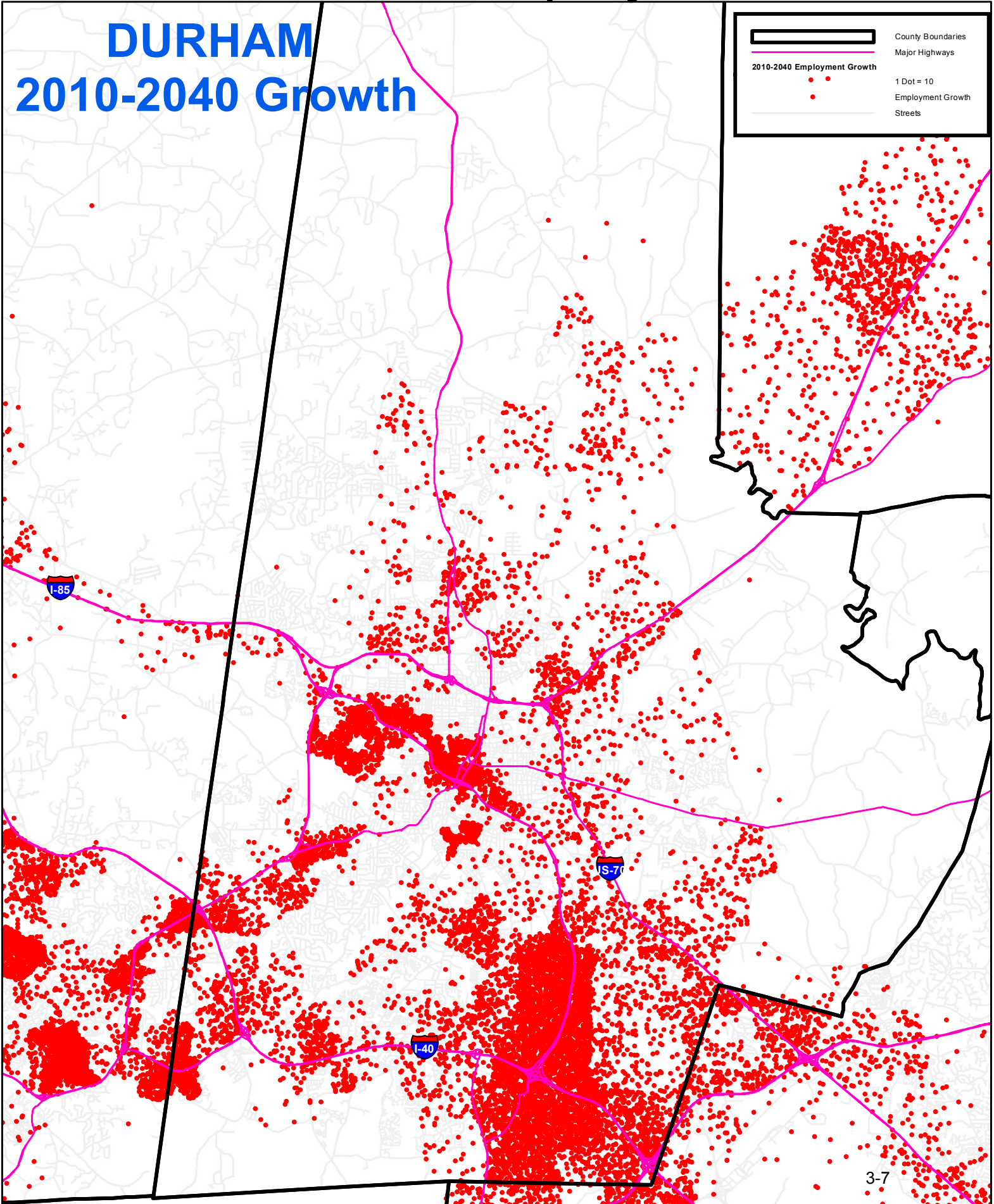
SE Data--Household

CHATHAM
2010-2040 Growth



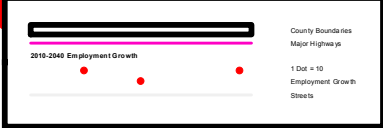
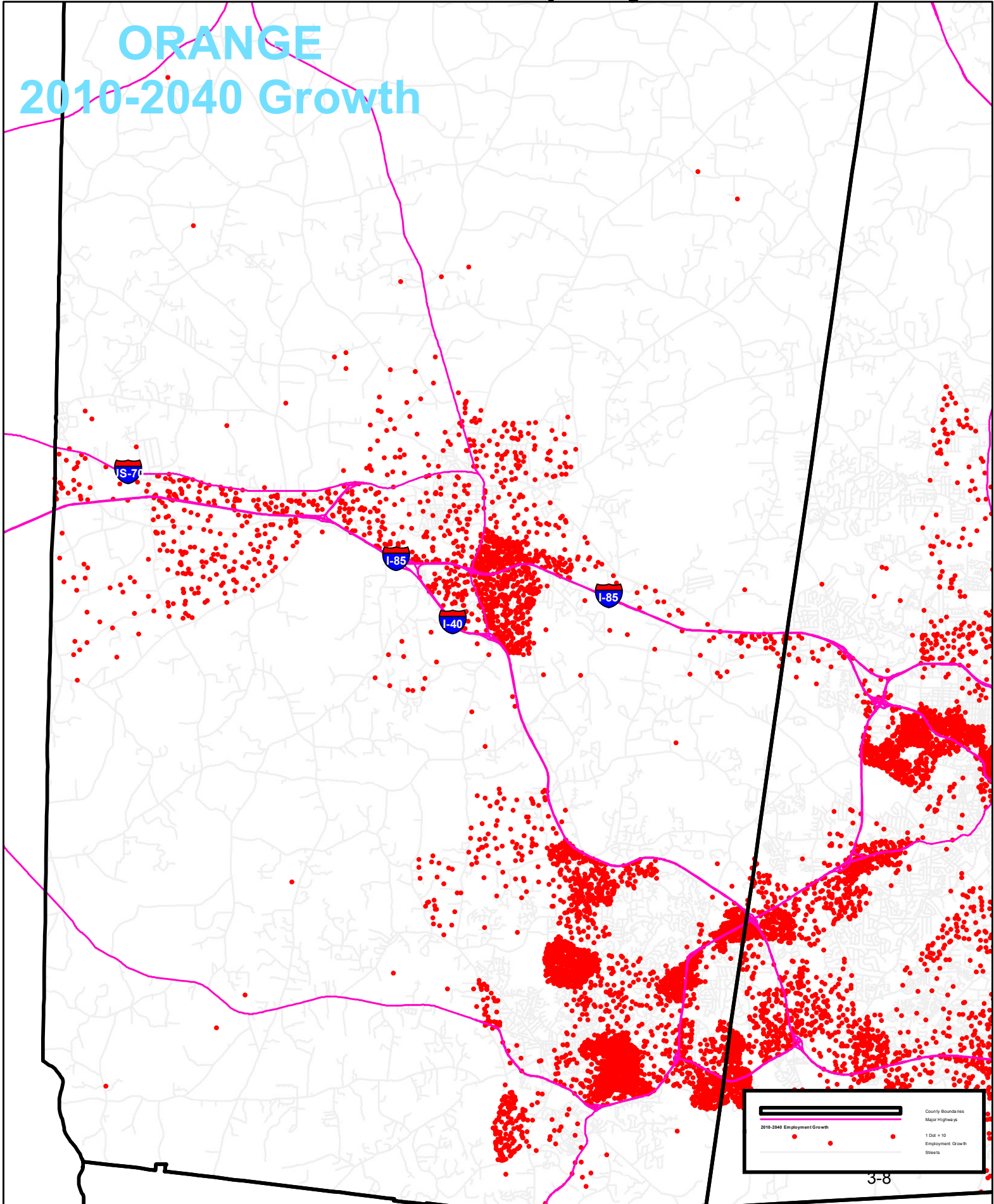
SE Data--Employment

DURHAM 2010-2040 Growth



SE Data--Employment

ORANGE
2010-2040 Growth



SE Data--Employment

CHATHAM
2010-2040 Growth

