

# Initial Population and Employment Guide

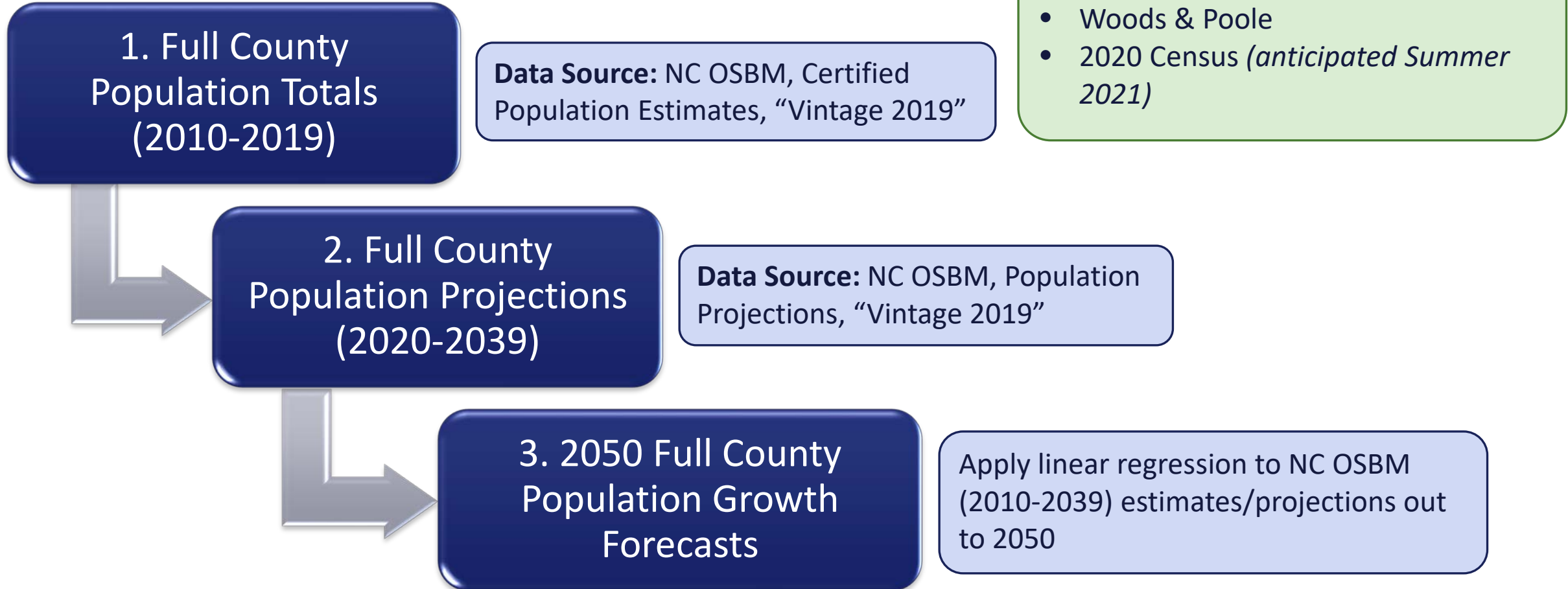
## Totals for the 2050 MTP

Dec. 18, 2020



# Population

# Population (Full County)



# Population (Full County)

|                             | 2045 MTP         |                  | 2050 MTP (Initial) |                  |                  |                  |                  |                  |
|-----------------------------|------------------|------------------|--------------------|------------------|------------------|------------------|------------------|------------------|
|                             | 2013             | 2045             | 2016*              | 2019             | 2020             | 2030             | 2040             | 2050             |
| Wake County                 | 964,022          | 1,743,753        | 1,028,509          | 1,085,297        | 1,109,883        | 1,328,336        | 1,545,253        | 1,764,577        |
| Durham County               | 286,239          | 446,074          | 302,879            | 316,934          | 320,322          | 366,111          | 412,521          | 458,395          |
| Orange County               | 139,103          | 187,059          | 142,148            | 146,521          | 148,610          | 163,699          | 178,557          | 193,600          |
| <b>W-D-O Total</b>          | <b>1,389,364</b> | <b>2,376,886</b> | <b>1,473,536</b>   | <b>1,548,752</b> | <b>1,578,815</b> | <b>1,858,146</b> | <b>2,136,331</b> | <b>2,416,572</b> |
| Chatham County              | 67,492           | 121,287          | 70,746             | 75,705           | 77,713           | 94,920           | 111,689          | 128,859          |
| Franklin County             | 62,661           | 98,617           | 65,260             | 70,157           | 70,212           | 81,204           | 92,109           | 103,156          |
| Granville County            | 57,774           | 77,618           | 59,048             | 61,081           | 62,147           | 69,540           | 76,506           | 83,860           |
| Harnett County              | 123,369          | 197,393          | 129,434            | 134,906          | 137,358          | 158,563          | 179,624          | 200,747          |
| Johnston County             | 177,100          | 357,464          | 188,749            | 206,016          | 212,401          | 269,736          | 323,780          | 379,794          |
| Nash County                 | 94,548           | 94,418           | 94,302             | 96,089           | 95,923           | 97,276           | 98,153           | 99,182           |
| Person County               | 39,129           | 42,368           | 39,753             | 40,315           | 40,529           | 41,823           | 43,022           | 44,223           |
| <b>TRM Study Area Total</b> | <b>1,739,340</b> | <b>3,021,420</b> | <b>2,120,828</b>   | <b>2,233,021</b> | <b>2,275,098</b> | <b>2,671,208</b> | <b>3,061,214</b> | <b>3,456,393</b> |

\* NC OSBM Certified Population Estimates, "Vintage 2019"

# Population (*Partial* County)

1. Took percentage of population within TRM based on Tract and Block Group trends from 1990, 2000, and 2010 Census

**Data Source:** Decennial Census (1990, 2000, 2010)

2. Created linear trend chart with 1990-2010 percentages

3. Used linear trend line equation from Step 2 to calculate population proportion through 2050

4. Entered total county population for each year from "Draft 2050 MTP Guide Totals" workbook; the same data source was used for partial population forecasts for consistency

## TRM Counties:

- Chatham
- *Durham (full)*
- Franklin
- Granville
- Harnett
- Johnson
- Nash
- *Orange (full)*
- Person
- *Wake (full)*

**Data Source:** NC OSBM Standard Population Estimates, "Vintage 2019"

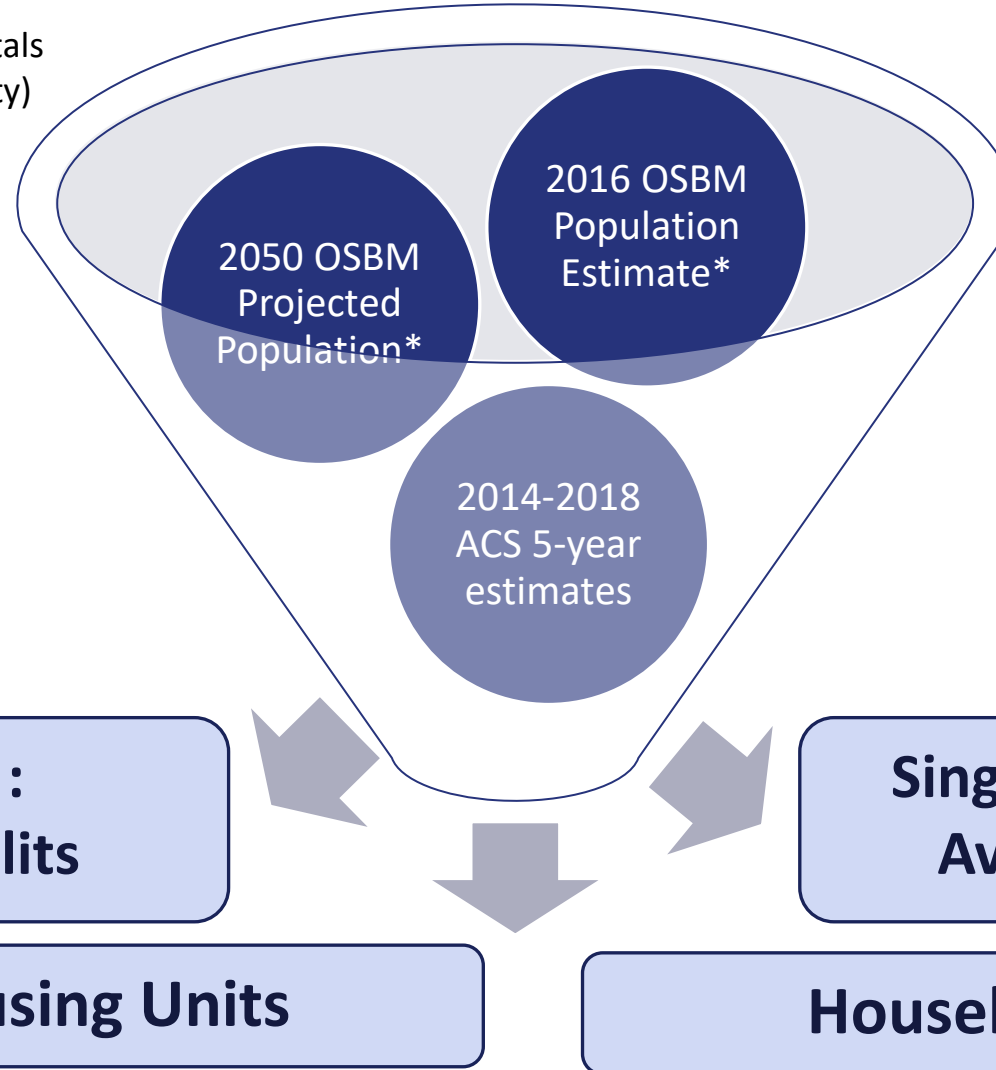
# Population (*Partial County*)

|                             | 2045 MTP         |                  | 2050 MTP (Initial) |                  |                  |                  |                  |                  |
|-----------------------------|------------------|------------------|--------------------|------------------|------------------|------------------|------------------|------------------|
|                             | 2013             | 2045             | 2016               | 2019             | 2020             | 2030             | 2040             | 2050             |
| Wake County                 | 964,022          | 1,743,753        | 1,026,952          | 1,085,297        | 1,109,883        | 1,328,336        | 1,545,253        | 1,764,577        |
| Durham County               | 286,239          | 446,074          | 302,380            | 316,934          | 320,322          | 366,111          | 412,521          | 458,395          |
| Orange County               | 139,103          | 187,059          | 142,138            | 146,521          | 148,610          | 163,699          | 178,557          | 193,600          |
| <b>W-D-O Total</b>          | <b>1,389,364</b> | <b>2,376,887</b> | <b>1,471,470</b>   | <b>1,548,752</b> | <b>1,578,815</b> | <b>1,858,146</b> | <b>2,136,331</b> | <b>2,416,572</b> |
| Chatham County              | 41,484           | 84,066           | 48,296             | 49,388           | 51,079           | 67,045           | 84,369           | 103,661          |
| Franklin County             | 53,244           | 86,346           | 56,512             | 60,740           | 60,926           | 72,066           | 83,560           | 95,616           |
| Granville County            | 33,696           | 49,392           | 34,933             | 39,515           | 40,602           | 49,874           | 59,757           | 70,859           |
| Harnett County              | 39,499           | 65,434           | 39,330             | 44,396           | 45,301           | 53,428           | 61,808           | 70,512           |
| Johnston County             | 145,881          | 318,799          | 159,527            | 176,913          | 183,169          | 242,435          | 302,800          | 369,014          |
| Nash County                 | 3,946            | 5,497            | 4,280              | 4,118            | 4,123            | 4,309            | 4,476            | 4,652            |
| Person County               | 32,227           | 34,999           | 31,856             | 33,212           | 33,445           | 35,105           | 36,721           | 38,371           |
| <b>TRM Study Area Total</b> | <b>1,739,340</b> | <b>3,021,420</b> | <b>1,846,204</b>   | <b>1,957,033</b> | <b>1,997,460</b> | <b>2,382,408</b> | <b>2,769,822</b> | <b>3,169,256</b> |

# Households

# Households (Full and Partial County)

\* Draft/adopted 2050 MTP Guide Totals for Population (Full and Partial County)



## Reference / Comparison Data Sources:

- Woods & Poole
- 2020 Census (*anticipated Summer 2021*)



# Housing Unit Estimate from Population (*Partial County\**)



\* *Connect 2045* Guide  
Totals did not include  
Full County calculations  
in adopted spreadsheet

|                                 | 2045 MTP                                   |                                   |                                  |                                       |                                      | 2050 MTP (Initial)                         |                                     |                                    |                                       |                                      |
|---------------------------------|--|-----------------------------------|----------------------------------|---------------------------------------|--------------------------------------|--|-------------------------------------|------------------------------------|---------------------------------------|--------------------------------------|
|                                 | 2013 Housing Unit Estimate from Population |                                   |                                  |                                       |                                      | 2016 Housing Unit Estimate from Population |                                     |                                    |                                       |                                      |
|                                 | Total Units:                               | % of housing stock: single family | % of housing stock: multi family | Average household size: single family | Average household size: multi family | Total Units:                               | % of housing stock: single family** | % of housing stock: multi family** | Average household size: single family | Average household size: multi family |
| Wake County                     | 360,382                                    | 0.70                              | 0.30                             | 2.9                                   | 2.1                                  | 383,107                                    | 0.70                                | 0.30                               | 3.0                                   | 2.1                                  |
| Durham County                   | 111,399                                    | 0.65                              | 0.35                             | 2.9                                   | 2.0                                  | 122,956                                    | 0.65                                | 0.35                               | 2.7                                   | 2.0                                  |
| Orange County                   | 57,469                                     | 0.65                              | 0.35                             | 2.6                                   | 2.1                                  | 55,945                                     | 0.65                                | 0.35                               | 2.8                                   | 2.1                                  |
| <b>W-D-O Total/Avg</b>          | <b>529,249</b>                             | <b>0.70</b>                       | <b>0.30</b>                      | <b>2.8</b>                            | <b>2.1</b>                           | <b>562,009</b>                             | <b>0.75</b>                         | <b>0.25</b>                        | <b>2.8</b>                            | <b>2.0</b>                           |
| Chatham County (p)              | 16,587                                     | 0.90                              | 0.10                             | 2.6                                   | 1.8                                  | 19,289                                     | 0.90                                | 0.10                               | 2.5                                   | 1.9                                  |
| Franklin County (p)             | 20,904                                     | 0.95                              | 0.05                             | 2.6                                   | 1.7                                  | 21,771                                     | 0.95                                | 0.05                               | 2.6                                   | 1.9                                  |
| Granville County (p)            | 12,329                                     | 0.90                              | 0.10                             | 2.8                                   | 2.0                                  | 14,042                                     | 0.90                                | 0.10                               | 2.7                                   | 2.0                                  |
| Harnett County (p)              | 14,007                                     | 0.90                              | 0.10                             | 2.9                                   | 1.9                                  | 14,563                                     | 0.95                                | 0.05                               | 2.9                                   | 2.2                                  |
| Johnston County (p)             | 51,061                                     | 0.90                              | 0.10                             | 2.9                                   | 2.2                                  | 55,618                                     | 0.95                                | 0.05                               | 2.9                                   | 2.1                                  |
| Nash County (p)                 | 1,472                                      | 1.00                              | 0.00                             | 2.7                                   | 1.8                                  | 1,564                                      | 0.90                                | 0.10                               | 2.6                                   | 1.8                                  |
| Person County (p)               | 12,390                                     | 0.90                              | 0.10                             | 2.6                                   | 2.6                                  | 13,142                                     | 0.90                                | 0.10                               | 2.5                                   | 2.1                                  |
| <b>TRM Study Area Total/Avg</b> | <b>658,000</b>                             | <b>0.85</b>                       | <b>0.15</b>                      | <b>2.8</b>                            | <b>2.1</b>                           | <b>701,997</b>                             | <b>0.90</b>                         | <b>0.10</b>                        | <b>2.7</b>                            | <b>2.0</b>                           |

\*\* Durham, Orange and Wake use *Connect 2045* splits

# Total Households from Population (*Partial County\**)



\* *Connect 2045* Guide  
Totals did not include  
Full County calculations  
in adopted spreadsheet

|                             | 2045 MTP                       |                                    |                                  |  |                                  | 2050 MTP (Initial)             |                                    |                                  |  |                                  |
|-----------------------------|--------------------------------|------------------------------------|----------------------------------|--|----------------------------------|--------------------------------|------------------------------------|----------------------------------|--|----------------------------------|
|                             | 2045 Households                |                                    |                                  |  |                                  | 2050 Households                |                                    |                                  |  |                                  |
|                             | Net population added 2013-2045 | Net new population : single family | Net new population: multi family | Net new occupied units : single family | Net occupied units: multi family | Net population added 2013-2045 | Net new population : single family | Net new population: multi family | Net new occupied units : single family | Net occupied units: multi family |
| Wake County                 | 779,731                        | 597,842                            | 181,889                          | 204,042                                | 87,446                           | 736,068                        | 566,142                            | 169,656                          | 191,923                                | 82,253                           |
| Durham County               | 159,835                        | 115,639                            | 44,196                           | 40,433                                 | 21,772                           | 155,516                        | 111,560                            | 43,956                           | 41,036                                 | 22,097                           |
| Orange County               | 47,956                         | 33,741                             | 14,216                           | 12,878                                 | 6,934                            | 51,452                         | 36,659                             | 14,793                           | 13,163                                 | 7,088                            |
| <b>W-D-O Total</b>          | <b>987,523</b>                 | <b>747,222</b>                     | <b>240,301</b>                   | <b>257,353</b>                         | <b>116,153</b>                   | <b>943,036</b>                 | <b>714,631</b>                     | <b>228,405</b>                   | <b>246,122</b>                         | <b>111,437</b>                   |
| Chatham County (p)          | 42,582                         | 39,534                             | 3,048                            | 15,323                                 | 1,703                            | 57,161                         | 52,752                             | 4,409                            | 21,340                                 | 2,371                            |
| Franklin County (p)         | 33,103                         | 31,978                             | 1,124                            | 12,347                                 | 650                              | 39,501                         | 38,073                             | 1,428                            | 14,588                                 | 767                              |
| Granville County (p)        | 15,696                         | 14,576                             | 1,120                            | 5,169                                  | 574                              | 33,791                         | 31,191                             | 2,600                            | 11,520                                 | 1,280                            |
| Harnett County (p)          | 25,935                         | 24,169                             | 1,766                            | 8,277                                  | 920                              | 28,194                         | 27,123                             | 1,072                            | 9,217                                  | 485                              |
| Johnston County (p)         | 172,919                        | 159,603                            | 13,315                           | 54,472                                 | 6,052                            | 208,991                        | 201,216                            | 7,775                            | 69,005                                 | 3,633                            |
| Nash County (p)             | 1,715                          | 1,715                              | -                                | 640                                    | -                                | 647                            | 602                                | 46                               | 228                                    | 25                               |
| Person County (p)           | 2,772                          | 2,494                              | 278                              | 959                                    | 107                              | 5,791                          | 5,326                              | 466                              | 2,109                                  | 227                              |
| <b>TRM Study Area Total</b> | <b>1,282,244</b>               | <b>1,021,292</b>                   | <b>260,952</b>                   | <b>354,540</b>                         | <b>126,158</b>                   | <b>1,317,113</b>               | <b>1,070,913</b>                   | <b>246,200</b>                   | <b>374,101</b>                         | <b>120,225</b>                   |

# Employment

# Employment Types and Data Sources

|   | W&P       | US BEA    | InfoUSA | Census QWI | LEHD/LODES | QCEW           |
|---|-----------|-----------|---------|------------|------------|----------------|
| <b>Employment Types</b>                     |           |           |         |            |            |                |
| Wage & Salary (UI Covered)                  | X         | X         | X       | X          | X          | X              |
| Federal Civilian                            | X         | X         | ?       |            | X          | X              |
| Wage & Salary (Not UI Covered) <sup>1</sup> | X         | X         | ?       |            |            |                |
| Self-Employed (Proprietors)                 | X         | X         | X       |            |            |                |
| <b>Years Available</b>                      |           |           |         |            |            |                |
| Historical                                  | 1975-2018 | 2001-2019 | 2020*   | 1993-2020  | 2002-2018  | 2000-2020      |
| Projected                                   | 2019-2050 | N/A       | N/A     | N/A        | N/A        | N/A            |
| <b>Geographies Available</b>                |           |           |         |            |            |                |
| County                                      | X         | X         | X       | X          | X          | X              |
| Sub-County                                  |           |           | X       |            | X          |                |
| Establishment                               |           |           | X       |            |            | X <sup>2</sup> |
| <b>NAICS Industry Level</b>                 |           |           |         |            |            |                |
| Sector (2 digit)                            | X         | X*        | X       | X          | X          | X              |
| Subsector (3 digit)                         |           |           | X       | X          |            | X              |
| Industry Group (4 digit)                    |           |           | X       | X          |            | X              |
| National Industry (6 digit)                 |           |           | X       |            |            |                |

<sup>1</sup> Includes private and government employment exempt from UI coverage. Private employment exempt from UI consists mostly of employment in religious organizations, private education, and private households. Government employment exempt from UI consists mostly of military employees as well as state and local elected officials, members of the judiciary, students and their spouses employed at public colleges and universities, and employees of public railroads.

<sup>2</sup> QCEW establishment-level data is not publicly available but has been requested from NC Dept. of Commerce

## Data Source Key:

**W&P:** Woods & Poole 2020 Data Pamphlet

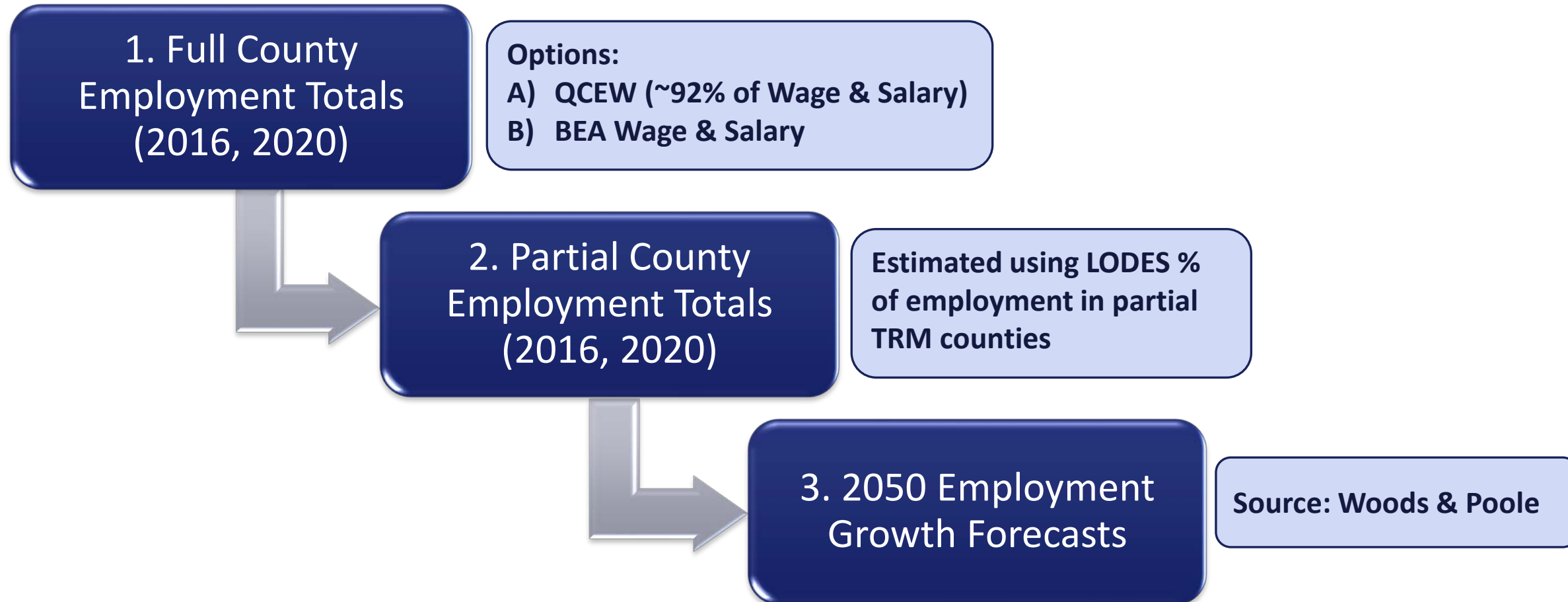
**US BEA:** US Bureau of Economic Analysis, Total Full-Time and Part-Time Employment by NAICS Industry (Table: CAEMP25N)

**Census QWI:** Quarterly Workforce Indicators (Source: LEHD), Beginning-of-Quarter Employment Counts

**LEHD/LODES:** LEHD Origin-Destination Employment Statistics, Work Area Characteristics, All Jobs for All Workers

**QCEW:** Quarterly Census of Employment and Wages, NC Labor and Economic Analysis Division

# County-Level Employment Guide Totals Process



# Full County Employment Totals: QCEW

| Full Counties              | QCEW           |                  |                  | % in Partial TRM Counties |      |      |
|----------------------------|----------------|------------------|------------------|---------------------------|------|------|
|                            | 2016 Q2        | 2020 Q1          | 2050             | 2016                      | 2020 | 2050 |
| Wake County                | 529,869        | 572,145          | 1,084,428        | 100%                      | 100% | 100% |
| Durham County              | 196,974        | 220,686          | 378,617          | 100%                      | 100% | 100% |
| Orange County              | 70,186         | 73,057           | 110,185          | 100%                      | 100% | 100% |
| <b>W-D-O Total</b>         | <b>797,029</b> | <b>865,888</b>   | <b>1,573,230</b> |                           |      |      |
| Chatham County             | 14,458         | 15,693           | 27,800           | 63%                       | 65%  | 78%  |
| Franklin County            | 11,542         | 12,409           | 18,803           | 94%                       | 95%  | 96%  |
| Granville County           | 21,039         | 20,786           | 30,735           | 40%                       | 41%  | 56%  |
| Harnett County             | 24,462         | 26,006           | 36,473           | 30%                       | 31%  | 42%  |
| Johnston County            | 46,862         | 52,299           | 84,228           | 92%                       | 93%  | 97%  |
| Nash County                | 40,344         | 40,273           | 45,193           | 2%                        | 2%   | 3%   |
| Person County              | 10,151         | 9,686            | 10,947           | 94%                       | 92%  | 92%  |
| <b>Full Counties Total</b> | <b>965,887</b> | <b>1,043,040</b> | <b>1,827,408</b> |                           |      |      |

**Notes:**

- QCEW employment totals (Source: NC Labor and Economic Analysis Division) account for 92% of BEA Wage & Salary employment on average for the 10 counties in the TRM study area.
- Partial-county percentages for 2016 were calculated using LODES 2016 Census block-level employment; 2020 and 2050 percentages are based on a linear regression of LODES 2013-2018 trend except for Person County, which was held constant at 2018 value.
- 2050 employment by county for QCEW was calculated using Woods & Poole employment growth rates (2020-2050).

# Full County Employment Totals: BEA

| Full Counties              | BEA Wage & Salary |                  |                  | % in Partial TRM Counties |      |      |
|----------------------------|-------------------|------------------|------------------|---------------------------|------|------|
|                            | 2016              | 2020             | 2050             | 2016                      | 2020 | 2050 |
| Wake County                | 574,867           | 643,362          | 1,219,411        | 100%                      | 100% | 100% |
| Durham County              | 214,306           | 237,238          | 407,014          | 100%                      | 100% | 100% |
| Orange County              | 79,532            | 84,149           | 126,913          | 100%                      | 100% | 100% |
| <b>W-D-O Total</b>         | <b>868,705</b>    | <b>964,749</b>   | <b>1,753,338</b> |                           |      |      |
| Chatham County             | 15,683            | 16,949           | 30,026           | 63%                       | 65%  | 78%  |
| Franklin County            | 12,821            | 13,769           | 20,863           | 94%                       | 95%  | 96%  |
| Granville County           | 21,918            | 22,256           | 32,909           | 40%                       | 41%  | 56%  |
| Harnett County             | 27,308            | 29,071           | 40,771           | 30%                       | 31%  | 42%  |
| Johnston County            | 50,464            | 56,612           | 91,174           | 92%                       | 93%  | 97%  |
| Nash County                | 42,871            | 43,752           | 49,097           | 2%                        | 2%   | 3%   |
| Person County              | 10,989            | 10,614           | 11,996           | 94%                       | 92%  | 92%  |
| <b>Full Counties Total</b> | <b>1,050,759</b>  | <b>1,157,772</b> | <b>2,030,174</b> |                           |      |      |

**Notes:**

- Partial-county percentages for 2016 were calculated using LODES 2016 Census block-level employment; 2020 and 2050 percentages are based on a linear regression of LODES 2013-2018 trend except for Person County, which was held constant at 2018 value.
- 2020 BEA Wage & Salary employment by county = Woods & Poole employment growth rate (2019-2020) applied to 2019 (most recent year available).
- 2050 employment by county for BEA was calculated based on Woods & Poole employment growth rates (2020-2050).

# Partial County Employment Guide Totals: QCEW

| TRM Study Area              | 2045 MTP       |                  | 2050 MTP Option A: QCEW |                |                |                |                  |
|-----------------------------|----------------|------------------|-------------------------|----------------|----------------|----------------|------------------|
|                             | 2013           | 2045             | TRMv6<br>2016           | 2016 Q2        | EA 2020        | 2020 Q1        | 2050             |
| Wake County                 | 505,966        | 939,481          | 561,954                 | 529,869        | 547,105        | 572,145        | 1,084,428        |
| Durham County               | 192,877        | 343,082          | 217,114                 | 196,974        | 201,052        | 220,686        | 378,617          |
| Orange County               | 64,212         | 107,073          | 71,516                  | 70,186         | 65,078         | 73,057         | 110,185          |
| <b>W-D-O Total</b>          | <b>763,055</b> | <b>1,389,636</b> | <b>850,584</b>          | <b>797,029</b> | <b>813,235</b> | <b>865,888</b> | <b>1,573,230</b> |
| Chatham County (p)          | 9,339          | 17,926           | 11,358                  | 9,133          | 9,355          | 10,213         | 21,689           |
| Franklin County (p)         | 12,993         | 22,450           | 14,262                  | 10,849         | 14,365         | 11,781         | 18,048           |
| Granville County (p)        | 8,373          | 12,037           | 12,995                  | 8,399          | 11,062         | 8,470          | 17,155           |
| Harnett County (p)          | 5,805          | 9,743            | 9,027                   | 7,338          | 5,878          | 8,164          | 15,424           |
| Johnston County (p)         | 40,724         | 67,056           | 50,057                  | 43,250         | 42,687         | 48,434         | 82,114           |
| Nash County (p)             | 300            | 409              | 776                     | 613            | 300            | 665            | 1,243            |
| Person County (p)           | 9,979          | 11,680           | 10,779                  | 9,531          | 9,693          | 8,938          | 10,102           |
| <b>TRM Study Area Total</b> | <b>850,568</b> | <b>1,530,937</b> | <b>959,838</b>          | <b>886,141</b> | <b>906,575</b> | <b>962,553</b> | <b>1,739,005</b> |

**Notes:**

- EA 2020 = Employment Analyst 2020; employment at Anchor Institutions is still under revision.



# Partial County Employment Guide Totals: BEA

| TRM Study Area              | 2045 MTP       |                  | 2050 MTP Option B: BEA |                |                |                  |                  |
|-----------------------------|----------------|------------------|------------------------|----------------|----------------|------------------|------------------|
|                             | 2013           | 2045             | TRMv6<br>2016          | 2016           | EA 2020        | 2020             | 2050             |
| Wake County                 | 505,966        | 939,481          | 561,954                | 574,867        | 547,105        | 643,362          | 1,219,411        |
| Durham County               | 192,877        | 343,082          | 217,114                | 214,306        | 201,052        | 237,238          | 407,014          |
| Orange County               | 64,212         | 107,073          | 71,516                 | 79,532         | 65,078         | 84,149           | 126,913          |
| <b>W-D-O Total</b>          | <b>763,055</b> | <b>1,389,636</b> | <b>850,584</b>         | <b>868,705</b> | <b>813,235</b> | <b>964,749</b>   | <b>1,753,338</b> |
| Chatham County (p)          | 9,339          | 17,926           | 11,358                 | 9,907          | 9,355          | 11,031           | 23,425           |
| Franklin County (p)         | 12,993         | 22,450           | 14,262                 | 12,051         | 14,365         | 13,072           | 20,026           |
| Granville County (p)        | 8,373          | 12,037           | 12,995                 | 8,750          | 11,062         | 9,069            | 18,369           |
| Harnett County (p)          | 5,805          | 9,743            | 9,027                  | 8,192          | 5,878          | 9,126            | 17,241           |
| Johnston County (p)         | 40,724         | 67,056           | 50,057                 | 46,574         | 42,687         | 52,428           | 88,886           |
| Nash County (p)             | 300            | 409              | 776                    | 651            | 300            | 722              | 1,350            |
| Person County (p)           | 9,979          | 11,680           | 10,779                 | 10,318         | 9,693          | 9,794            | 11,070           |
| <b>TRM Study Area Total</b> | <b>850,568</b> | <b>1,530,937</b> | <b>959,838</b>         | <b>965,147</b> | <b>906,575</b> | <b>1,069,992</b> | <b>1,933,706</b> |

**Notes:**

- EA 2020 = Employment Analyst 2020; employment at Anchor Institutions is still under revision.

# Next Steps

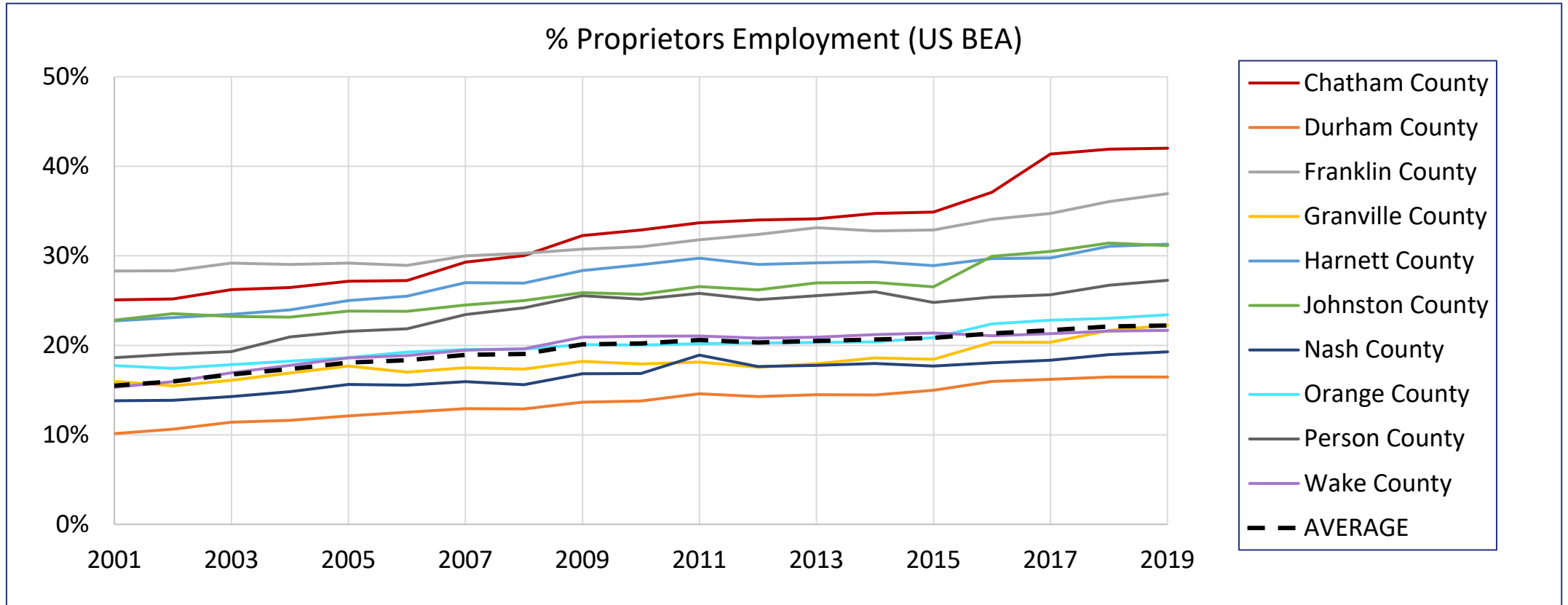
- Settle on initial county guide totals (2016, 2020, 2050) for Deficiency and Needs analysis
- Reconcile TRM and Employment Analyst with 2016 and 2020 guide totals
- Allocate 2020-2050 employment growth between 5 TRM job categories
  - Intent is to use method from 2045 MTP; seeking more detailed documentation
- Adjust guide totals for scenario model runs based on anchor institutions and QCEW establishment-level data

# **Additional Slides**

# 2020-2050 Employment Growth Assumptions

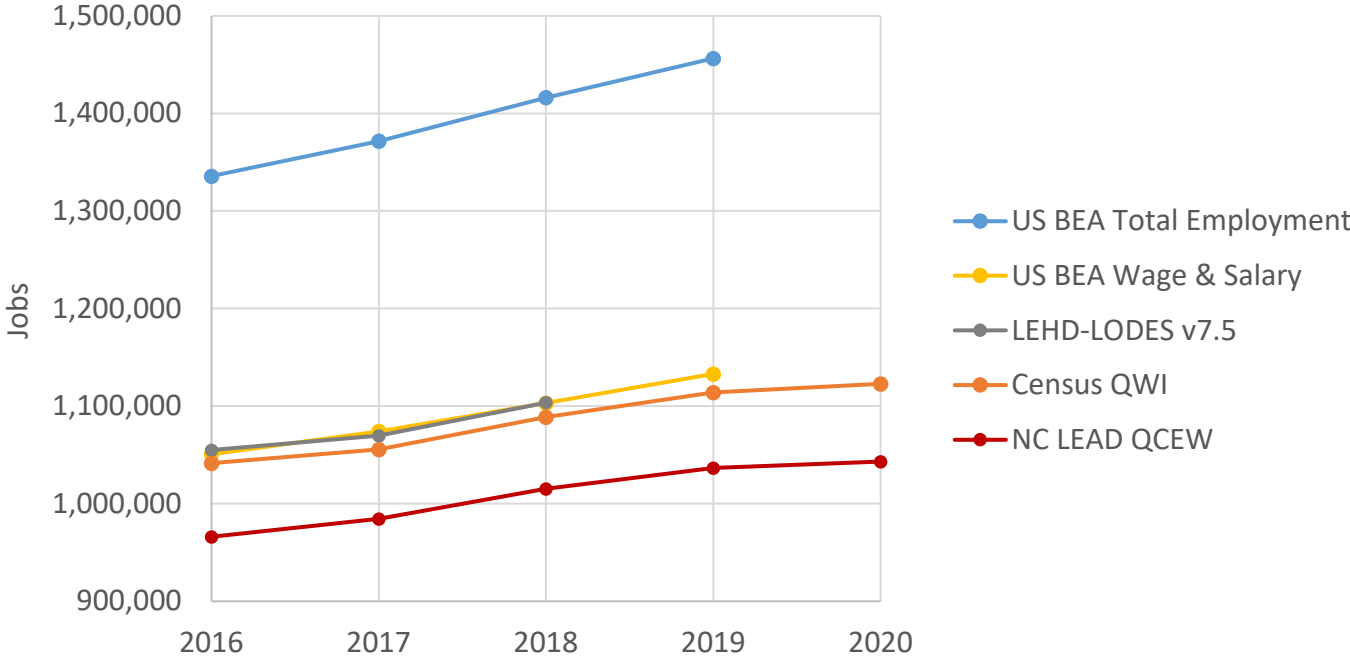
## All Counties:

- Proprietors employment (as % of total employment) will remain constant at 2019 levels between 2020 and 2050

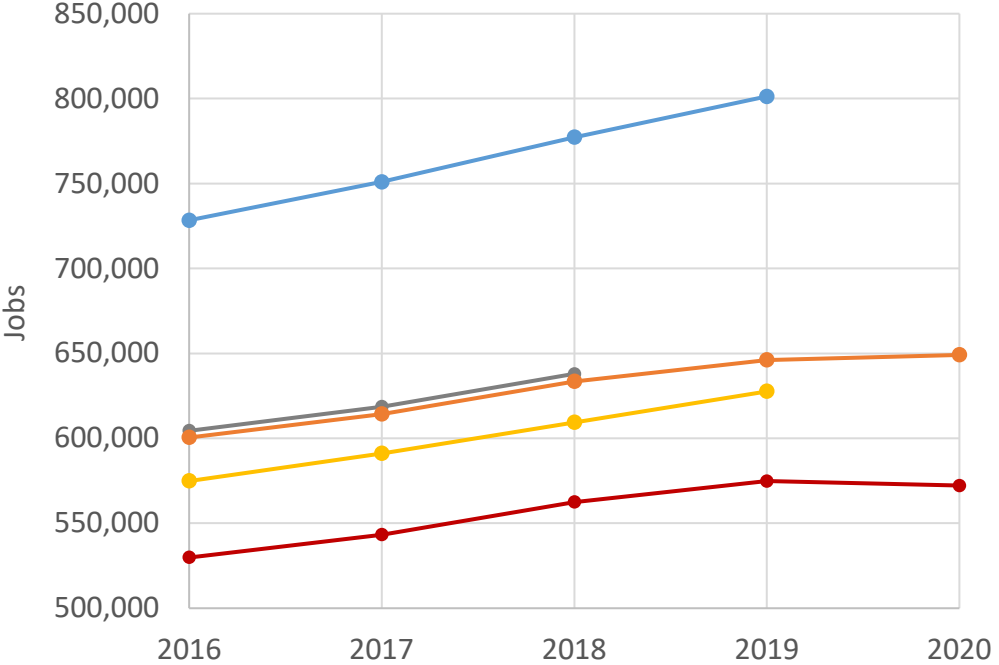


# Comparison of Employment Data Sources

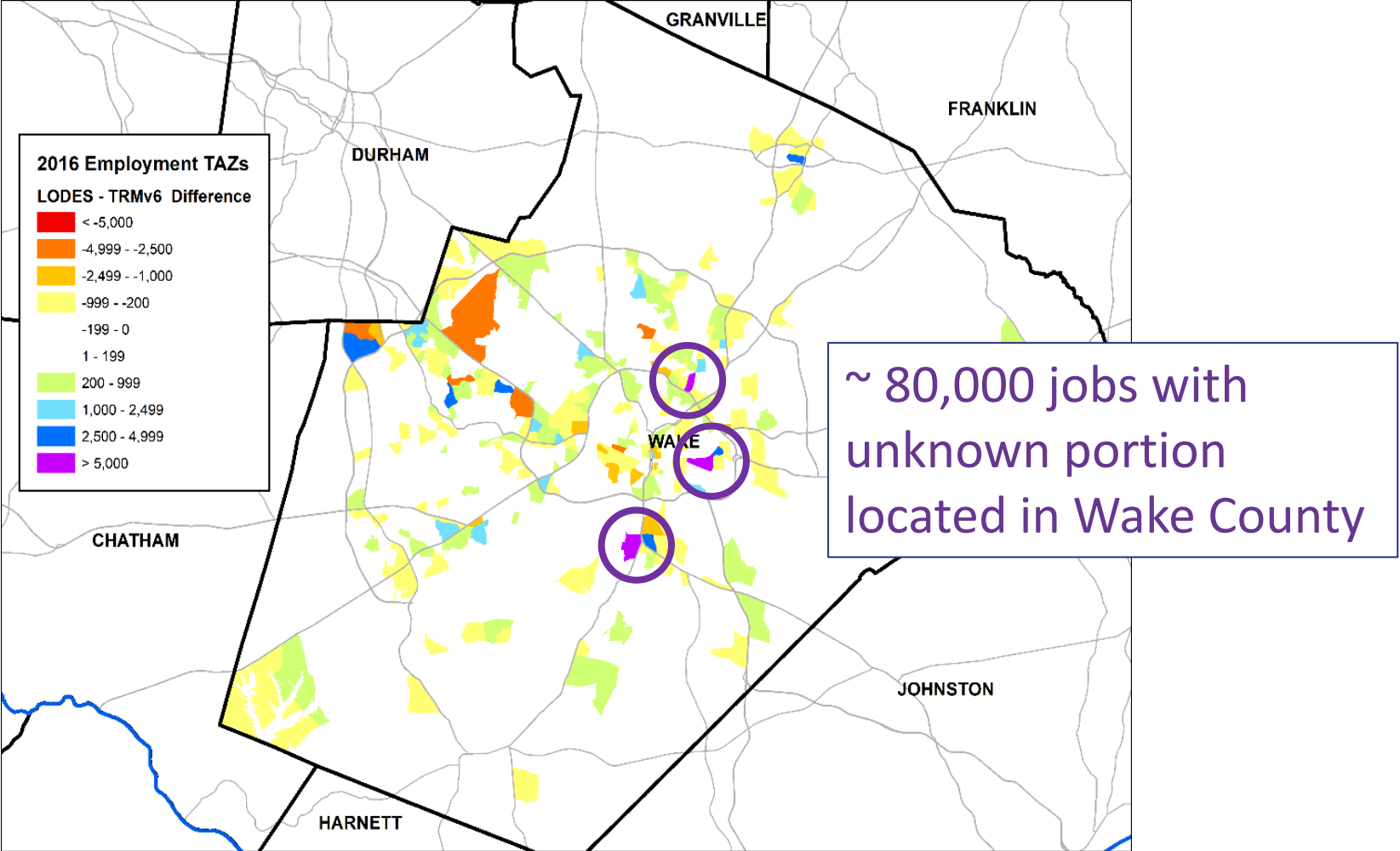
10 TRM Counties



Wake County

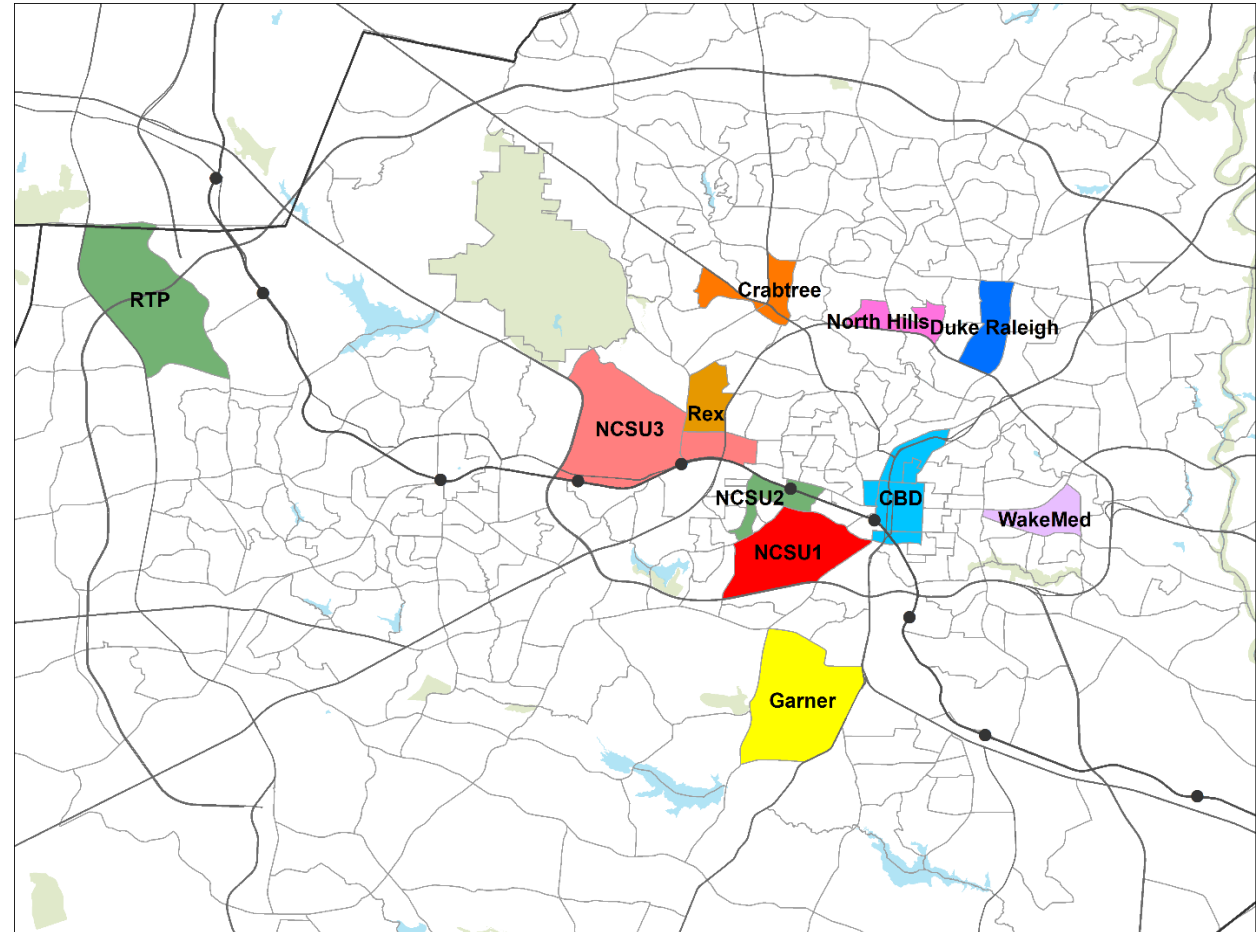


# LEHD-LODES Headquartering of State Employment



# Comparison with Streetlight Data (2020)

|              | LODES 2017<br>Jobs | Streetlight<br>HBW Trips | DIFF (LODES -<br>Streetlight) | % Diff |
|--------------|--------------------|--------------------------|-------------------------------|--------|
| CBD          | 43,321             | 25,320                   | 18,001                        | 58%    |
| Crabtree     | 8,248              | 2,966                    | 5,282                         | 36%    |
| Duke Raleigh | 59,460             | 6,316                    | 53,144                        | 11%    |
| Garner       | 25,744             | 3,482                    | 22,262                        | 14%    |
| NCSU1        | 3,977              | 5,877                    | -1,900                        | 148%   |
| NCSU2        | 370                | 7,925                    | -7,555                        | 2142%  |
| NCSU3        | 12,675             | 9,339                    | 3,336                         | 74%    |
| North Hills  | 5,103              | 6,020                    | -917                          | 118%   |
| Rex          | 8,634              | 3,863                    | 4,771                         | 45%    |
| RTP          | 10,568             | 8,814                    | 1,754                         | 83%    |
| WakeMed      | 21,690             | 5,819                    | 15,871                        | 27%    |
| TOTAL        | 199,790            | 85,743                   | 114,047                       | 43%    |



Streetlight data provided by CAMPO on 11/10/20  
 HBW Trips are the average values for weekdays (M-F) in February (2/1/2020 – 2/29/2020) all day (12am – 12am).