

# Socioeconomic Data

## Guide Totals

Population				
County	2016	2050	2016-2050	% change
Chatham*	46,051	103,345	57,294	124%
Durham	300,939	458,906	157,967	52%
Orange	143,678	193,477	49,799	35%
<i>Total</i>	<i>490,668</i>	<i>755,729</i>	<i>265,061</i>	<i>54%</i>
Employment				
County	2016	2050	2016-2050	% change
Chatham*	11,358	24,426	13,068	115%
Durham	217,114	401,168	184,054	85%
Orange	71,516	116,769	45,253	63%
<i>Total</i>	<i>299,988</i>	<i>542,363</i>	<i>242,375</i>	<i>81%</i>
* Only includes portion of Chatham County in modeling area.				

Fast growth, especially Durham and Chatham counties.

Employment growth outpaces population growth.

\* More detailed household and employment forecast data is available on Deficiency Analysis Web page.

# Socioeconomic Data

## Community Plan – Population growth from 2016 to 2050

Community Plan allocates guide total population based on local land use plans and policies.

Note clusters along major travel corridors between Durham and Chapel Hill

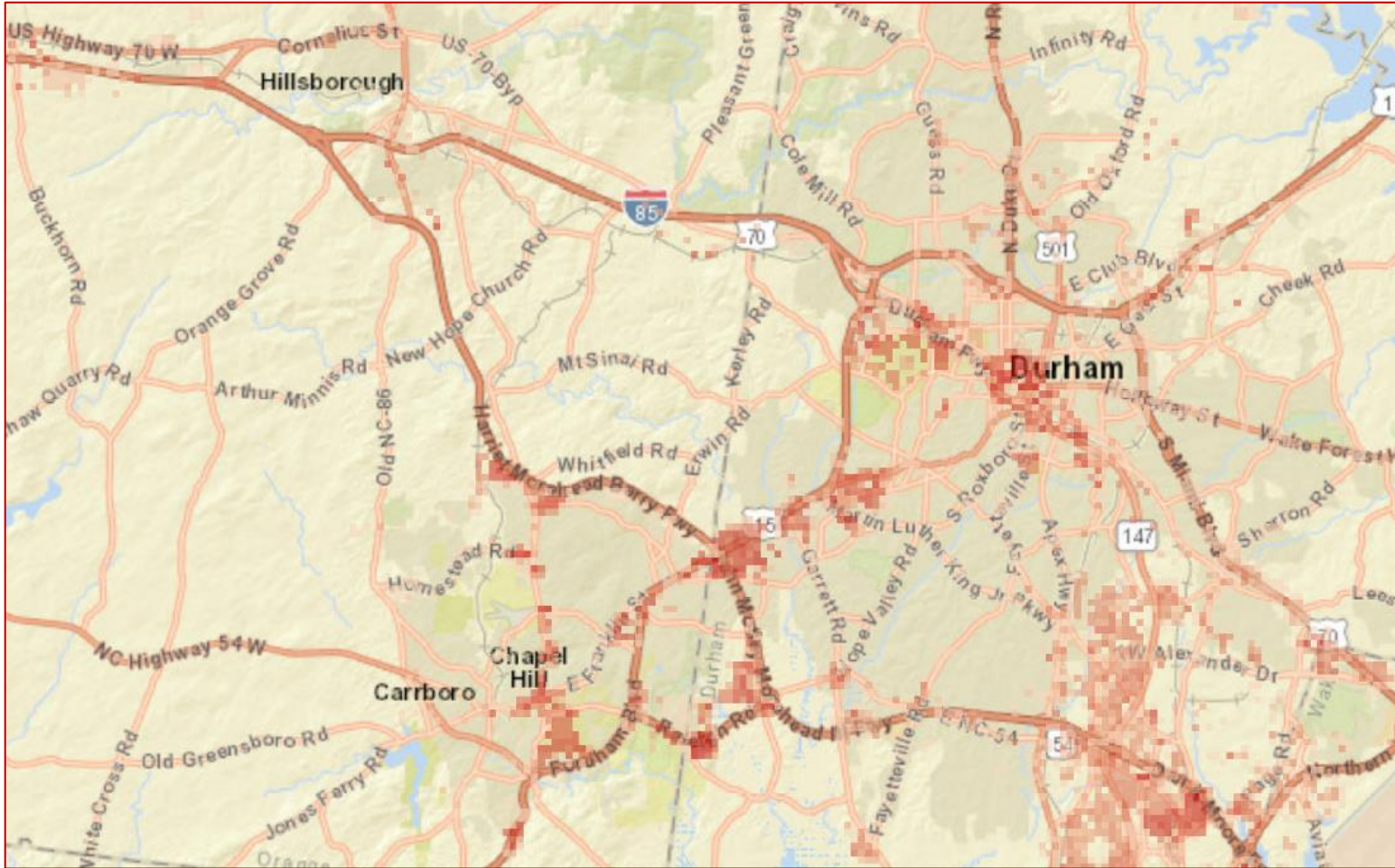
Durham County has spread north and east.

Much of Orange County growth is in towns and west US 70 corridor.



# Socioeconomic Data

## Community Plan – **Employment** growth from 2016 to 2050



Community Plan - based on local land use plans and policies.

Note clusters at major roadway crossroads, downtowns, and universities.

RTP and vicinity continues strong growth

Employment not as spread out as population (dwelling units).

\* Larger PDF maps and an interactive online map are available on Deficiency Analysis Web page.