



BURLINGTON-GRAHAM METROPOLITAN PLANNING ORGANIZATION

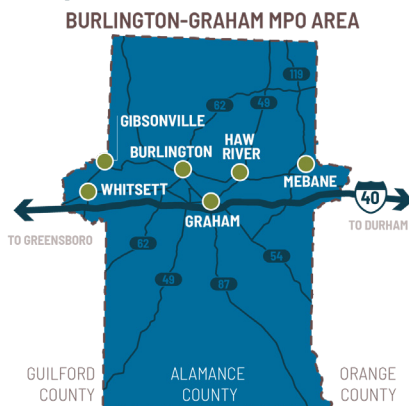
# REGIONAL TRANSIT FEASIBILITY STUDY

## Improving Regional Transit Access

Getting around the region by transit can be challenging. There are five public transit service providers in the region: Alamance County Transportation Authority (ACTA), Burlington Link Transit, GoTriangle, and Orange County Public Transportation (OCPT), with limited connections via the Piedmont Authority for Regional Transportation (PART).

**The Burlington-Graham Metropolitan Planning Organization (BGMPO) is studying opportunities to better coordinate and expand transit service within our region.** This

study will also look at ways to improve service frequency and connections between everyday destinations to meet the region's changing transportation needs.



## For More Information

**Wannetta Mallette, PTP**  
BGMPO Administrator  
wmallette@burlingtonnc.gov

**Jim Baker**  
Nelson\Nygaard  
jbaker@nelsonnygaard.com

*This study is funded by a BGMPO FTA Section 5303 grant.*

## Get Involved



### Online Survey

Live from July 24<sup>th</sup> to August 27<sup>th</sup>  
[surveymonkey.com/r/BGMPOTransit](https://surveymonkey.com/r/BGMPOTransit)



### Public Meeting #1

**TOPIC:** Rider Experiences Using Transit in Alamance County and Ideas for Improvements

#### VIRTUAL SESSION

Tuesday, August 22<sup>nd</sup> at 6 - 7pm  
via Zoom

#### IN-PERSON SESSION

Drop by an open house at Burlington Paramount Theater on Thursday, August 24<sup>th</sup>, 4 - 7 pm



### Public Meeting #2

**TOPIC:** Draft Recommendations

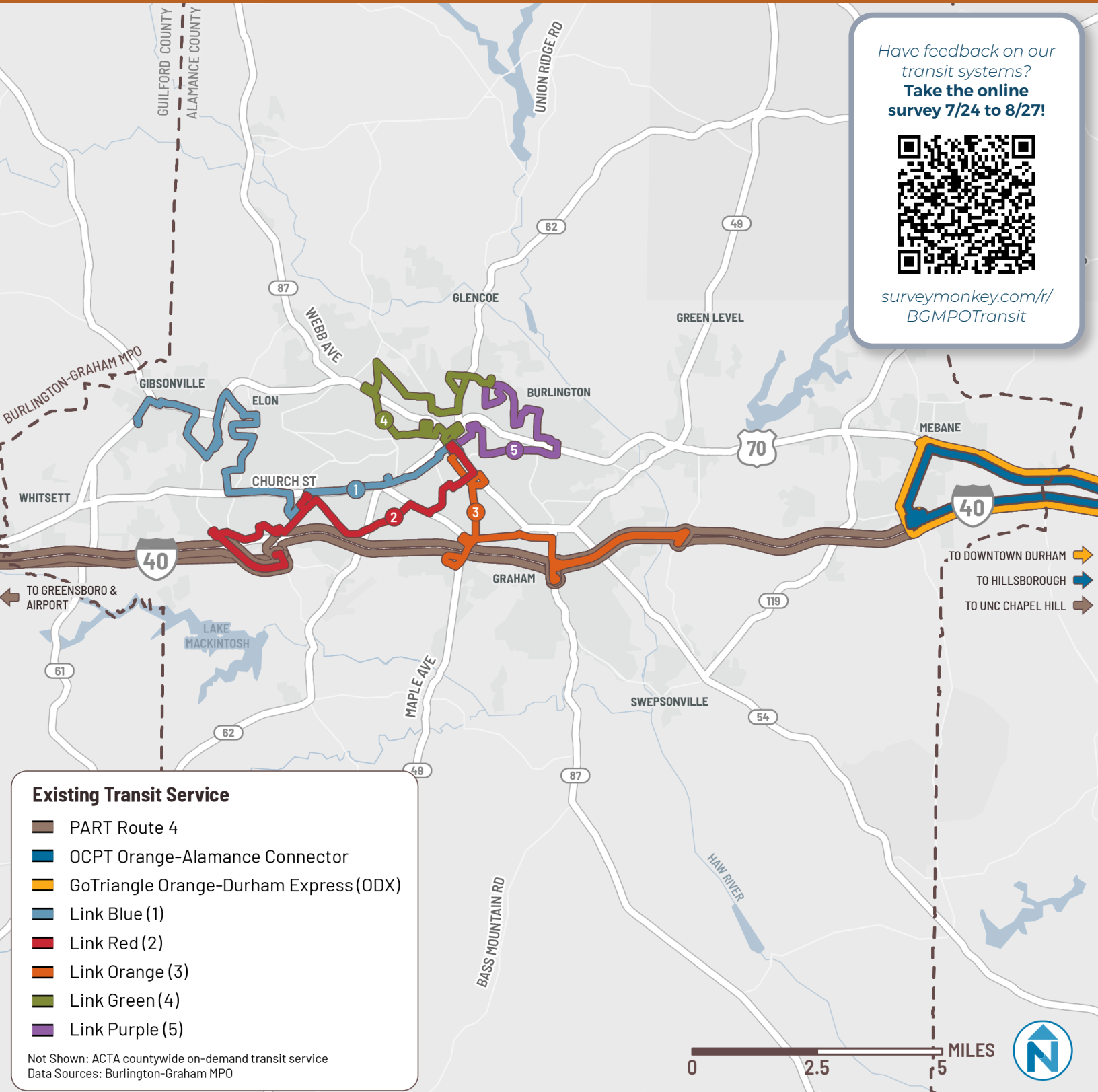
#### VIRTUAL SESSION

Tuesday, October 24<sup>th</sup> at 6 - 7pm  
via Zoom

#### IN-PERSON SESSION

Drop by an open house at Burlington Paramount Theater on Thursday, October 26<sup>th</sup>, 4 - 7 pm

See where you can travel by fixed route transit in our region today.



Have feedback on our transit systems?  
**Take the online survey 7/24 to 8/27!**



[surveymonkey.com/r/BGMPOTransit](https://surveymonkey.com/r/BGMPOTransit)