

US 15-501 Corridor Study



Pre-Proposal Meeting

September 28, 2017

Agenda



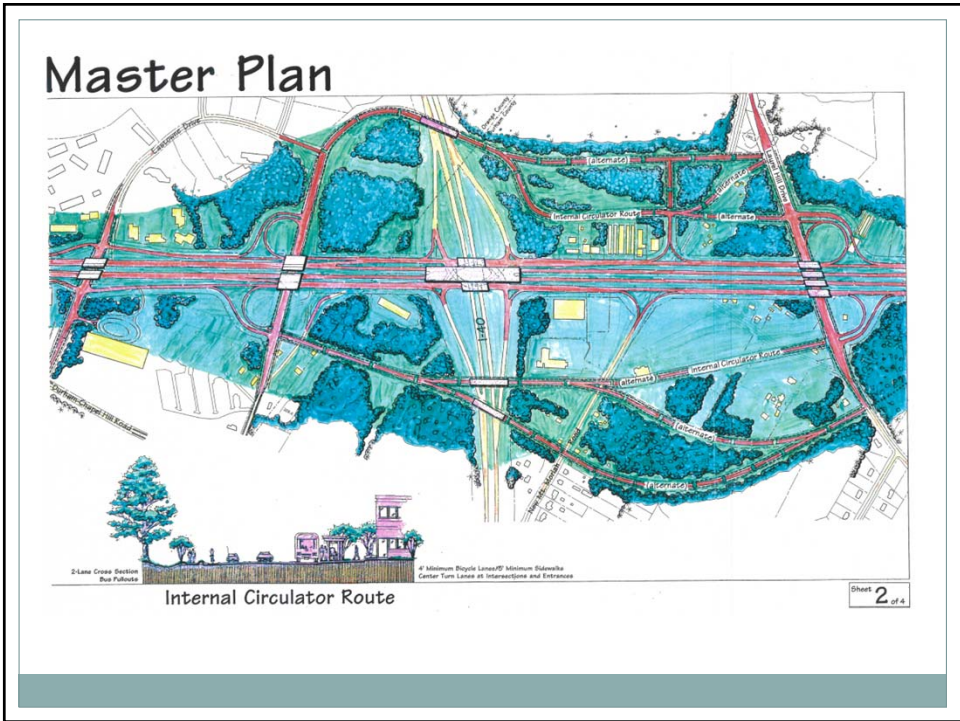
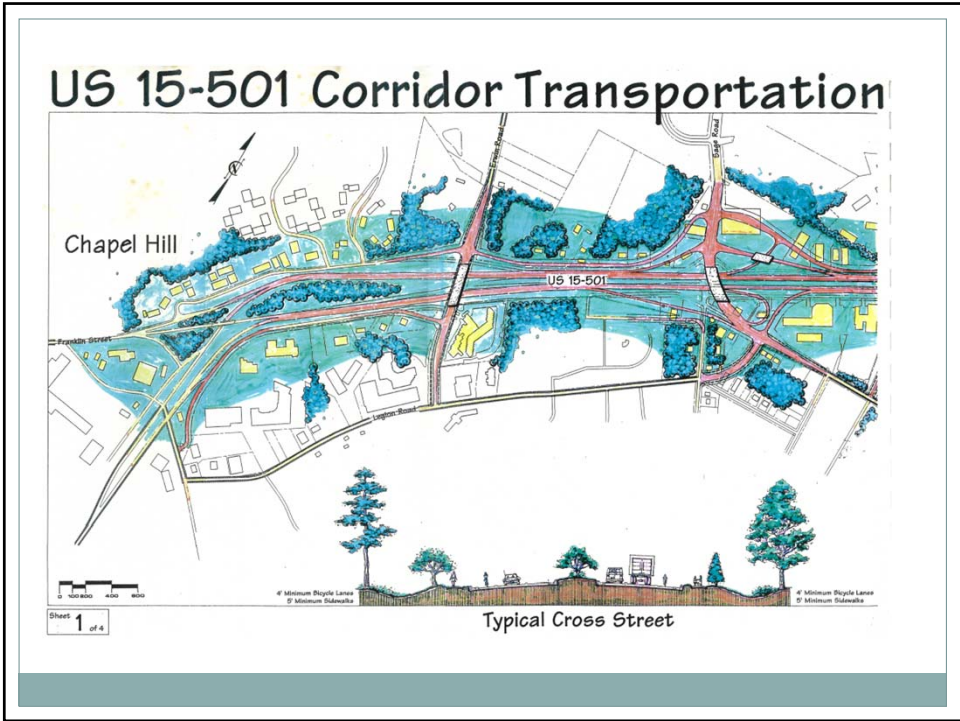
- **Welcome/Introductions/Sign-in/Housekeeping**
- **Project Overview**
- **RFP Details**
- **Deliverables**
- **Questions**
- **Adjourn**

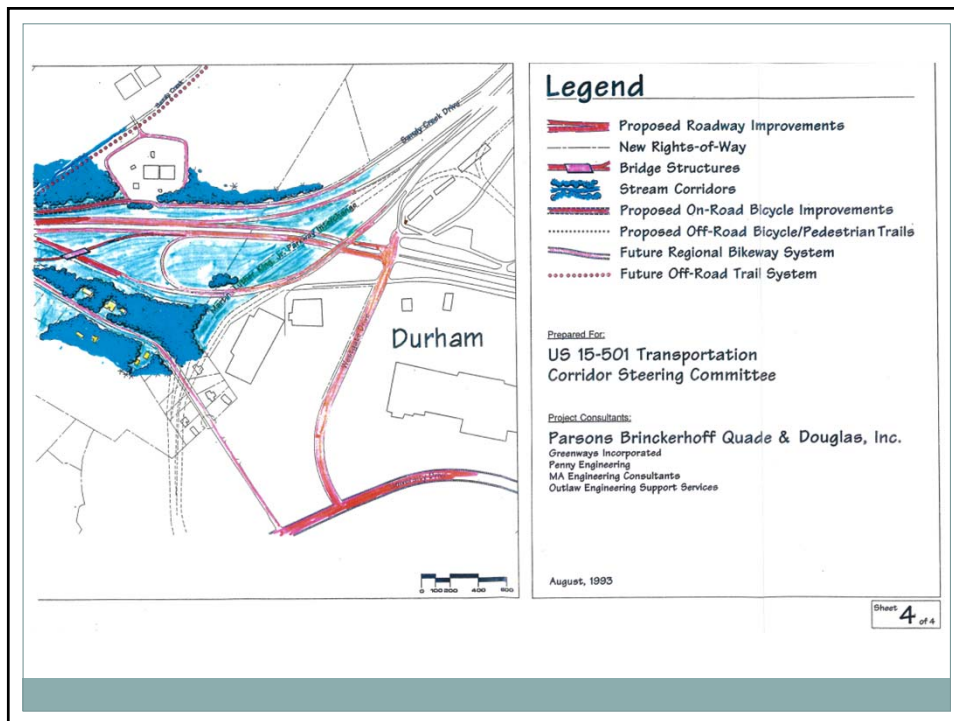
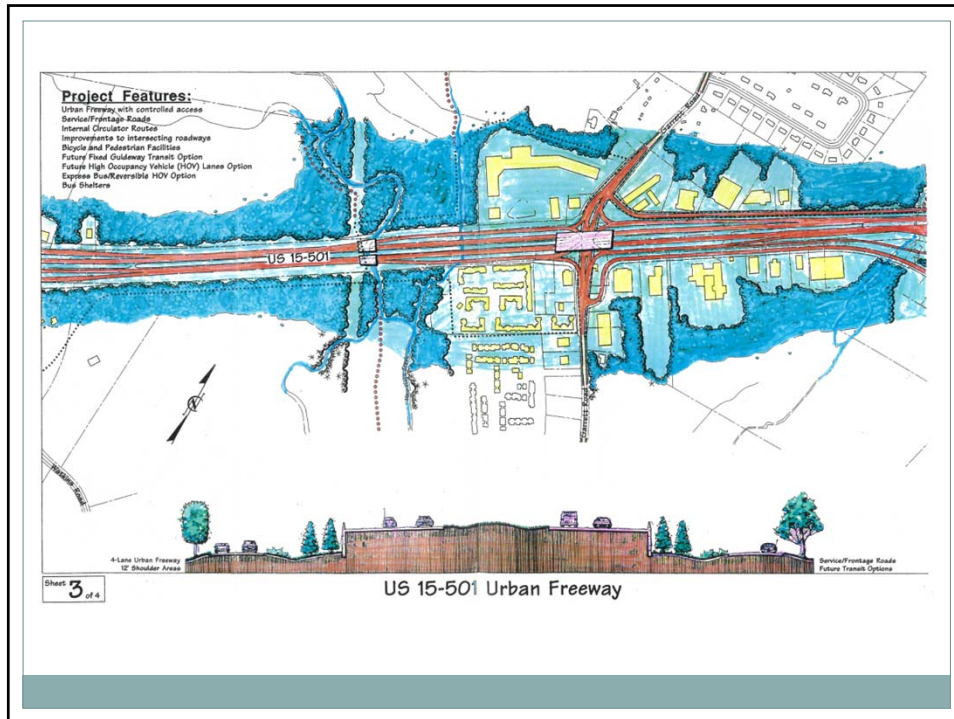
Study Overview/Background

- 1993 Corridor Study - Bypass in Durham to Franklin St. in Chapel Hill
- Study assessed transportation impacts on future developments
- Master Plan approved by Durham, Durham County, Chapel Hill and the DCHC MPO
- Used to guide land-use/transportation decisions

Key Recommendations of the 1993 Study

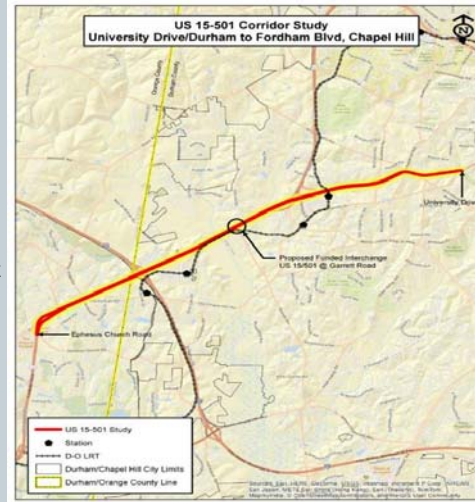
- 6-lane Freeway conversion in Durham from I-40 to the Bypass, including interchanges at Garrett, SW Durham, I-40 and bridge over Mt. Moriah
- 2 collector distributors over I-40
- 6-lane Expressway in Chapel Hill from I-40 to Franklin Street split
- Internal circulators to accommodate transit, bike/pedestrian





2017 Corridor Study: Purpose & Limits

- **Outcome**
 - Corridor Blueprint/ Master Plan that integrates latest land use and multi-modal transportation vision
- **Study Limits**
 - University Drive in Durham to Franklin St/Fordham Blvd split (Ephesus Church Road) in Chapel Hill



Rationale for New Study

- Corridor has changed tremendously
- Need to Integrate latest LU and Transportation Plans
 - D-O LRT
 - NCDOTs SPOT process (e.g. Garrett Rd interchange)
 - Managed lanes on I-40
 - Station Area Planning (FTA TOD Grant)
 - Land-uses changes (e.g. Patterson Place & Ephesus Church)
 - Gateway Station
 - Bike and pedestrian accommodations near University terminus
 - Park and ride – South Square vision
 - Internal collector streets /super street

Proposals Should

- Discuss how the study will address multi-modal mobility, operational deficiencies and safety along the corridor
- Provide a detailed coordination plan for elected officials, steering committee members and stakeholders
- Provide a detailed public engagement process
- Discuss how the study will provide an existing corridor profile showing current conditions and plans
- Discuss how the study will develop a multi-modal transportation analysis for the corridor

Proposals Should (cont.)

- Discuss how corridor performance measures will be developed and how they may be used to evaluate scenarios/alternatives
- Discuss the development of a recommended multi-modal corridor blueprint/master plan for the overall corridor as well as the three sub-segments
 - Ephesus Church to Eastowne Drive
 - Eastowne Drive to US 501 Bypass
 - US 501 Bypass to University Drive
- Provide outline for final report that will document the study

Proposal Contents

- Length – 25 numbered pages, double spaced, 11 point font.
- Resumes – Abbreviated resumes for key personnel
- DBE and Small Firms – The City of Durham and NCDOT encourage the use of Small Professional Service Firms. While no specific DBE goals are set for this project, firms are encouraged to seek out and utilize DBE's for appropriate work tasks.
- Sub-consultants – The City of Durham does not limit the submittal of sub-consultants on multiple proposals.

Draft Project Timeline

- Pre-proposal Meeting – September 28, 2017
- Questions regarding the RFP by 3:00 pm on October 9, 2017
- Responses to questions will be posted by 3:00 pm on October 11, 2017 to the city's website (<https://durhamnc.gov/bids.aspx>)
- Proposals are due by 3:00 pm on October 27, 2017
- Interviews - **November 13-14, 2017**
- Notify Selected Consultant – November 20, 2017
- Notice to Proceed – January 30, 2018

Questions

Questions?

The slide features a white header with the word "Questions" in a teal serif font. Below the header is a horizontal dashed line with a small white circle at its center. The main body of the slide is a large, solid grey rectangle. In the center of this grey area, the text "Questions?" is written in a bold, black, sans-serif font. At the very bottom of the slide, there is a thin, dark teal horizontal bar.